

REPLACEMENT PARTS MANUAL

Wall Mount Air Conditioner

Models:

W42AF-A	W42AFDB	W48AF-Q	W60AF-B	W60AFDA	W72AF-F
W42AF-B	W42AFDC	W48AFRC	W60AF-C	W60AFDB	W72AF-Q
W42AF-C	W48AF-A	W48AFDA	W60AF-E	W60AFDC	W72AFRC
W42AF-F	W48AF-B	W48AFDB	W60AF-F	W72AF-A	W72AFDA
W42AFRC	W48AF-C	W48AFDC	W60AF-Q	W72AF-B	W72AFDB
W42AFDA	W48AF-F	W60AF-A	W60AFRC	W72AF-C	W72AFDC

Contents

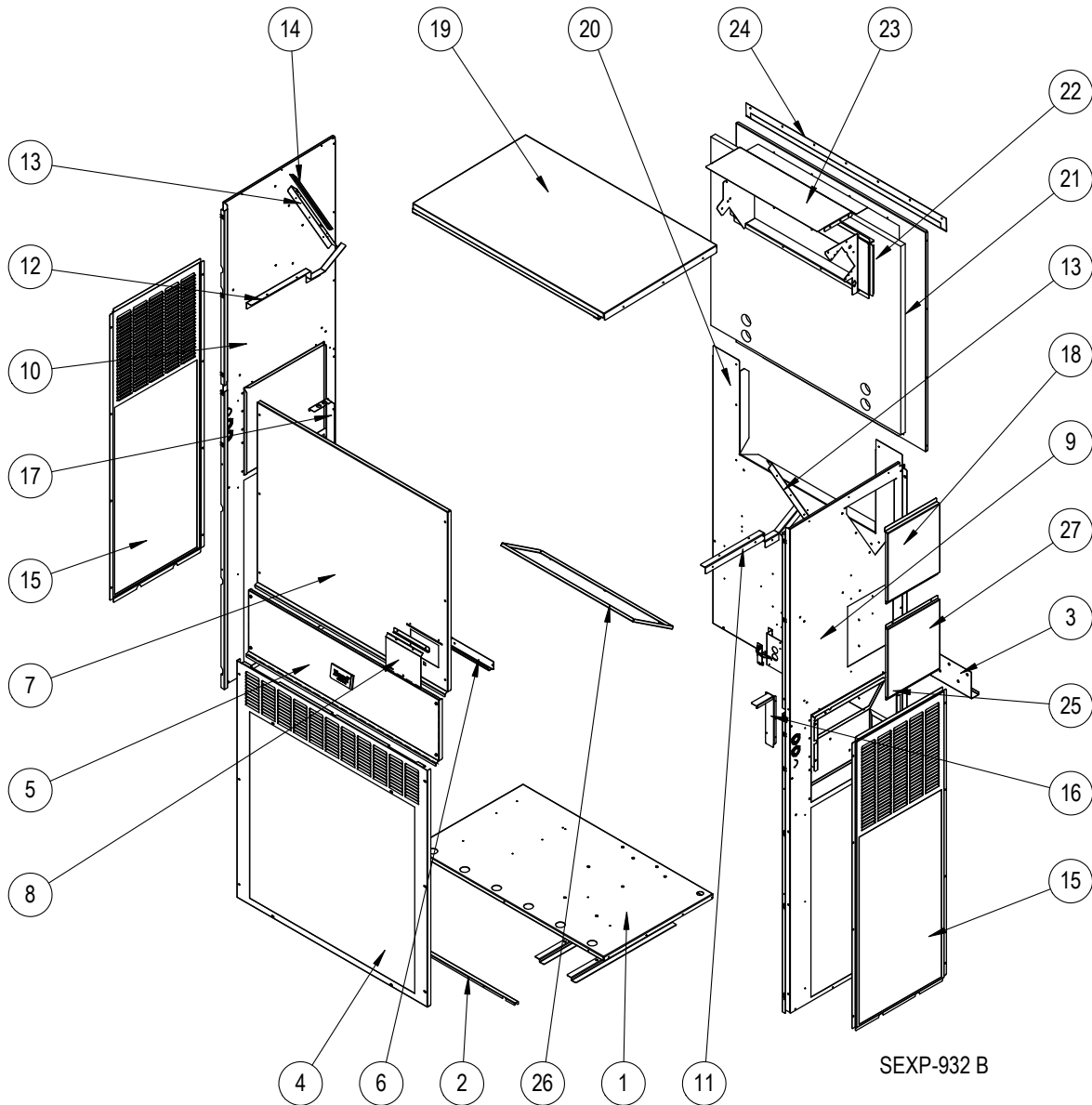
Description	Page	Description	Page
External Parts – Standard & Dehum.		Control Panel – Standard & Dehum.	
♦ Exploded View	2	♦ Layout View	16
♦ Usage List	3	♦ Usage List	17
♦ Usage List	4	♦ Usage List	18
External Parts – Recessed Cabinet		Blower Assembly	
♦ Exploded View	6	♦ Exploded View	19
♦ Usage List	7	♦ Usage List	19
Internal Parts – Standard & Dehum.		General Notes	
♦ Exploded View	8	➤ Revised and/or additional pages may be issued from time to time.	
♦ Usage List	9	➤ A complete and current manual consists of pages shown in the following contents section.	
♦ Usage List	10	Important	
Functional Components – Standard & Dehum.		➤ Contact the installing and/or local Bard distributor for all parts requirements. Make sure to have the complete model and serial number available from the unit rating plates.	
♦ Exploded View	12		
♦ Usage List	13		
♦ Usage List	14		
EEV Controller Assembly			
♦ Exploded View	15		
♦ Usage List	15		



Bard Manufacturing Company, Inc.
 Bryan, Ohio 43506
www.bardhvac.com

Manual: 2110-1480
 Supersedes: **NEW**
 Date: 11-20-24

EXTERNAL PARTS – STANDARD & DEHUMIDIFICATION



This drawing to be used for reference for pages 3 and 4

EXTERNAL PARTS – STANDARD & DEHUMIDIFICATION

Dwg No.	Part Number	Description	W42AF-A, B, C, F, RC	W42AFDA, B, C	W48AF-A, B, C, F, Q, RC	W48AFDA, B, C
1	127-574BX	Unit Base	X	X	X	X
1	127-584BX ③	Unit Base	0	0	0	0
2	113-762BX	Front Base Bracket	X	X	X	X
2	113-797BX ③	Front Base Bracket	0	0	0	0
3	113-140BX	Bottom Mounting Bracket	X	X	X	X
4	119-125-*BX ①	Front Grille	X	X	X	X
4	119-148BX ②	Front Grille	0	0	0	0
4	119-135BX ③	Front Grille	0	0	0	0
5	533-301-*BX ①	Control Panel Cover (Outer)	X	X	X	X
5	533-309BX ②	Control Panel Cover (Outer)	0	0	0	0
5	533-310BX ③	Control Panel Cover (Outer)	0	0	0	0
6	165-608-*BX ①	Rain Channel	X	X	X	X
6	165-609BX ②	Rain Channel	0	0	0	0
6	165-610BX ③	Rain Channel	0	0	0	0
7	515-323-*BX ①	Upper Front	X	X	X	X
7	515-328BX ②	Upper Front	0	0	0	0
7	515-330BX ③	Upper Front	0	0	0	0
8	152-717-*BX ①	Disconnect Access Door	X	X	X	X
8	152-723BX ②	Disconnect Access Door	0	0	0	0
8	152-724BX ③	Disconnect Access Door	0	0	0	0
9	501-1127-*BX ①	Right Side	X	X	X	X
9	501-1128BX ②	Right Side	0	0	0	0
9	501-1129BX ③	Right Side	0	0	0	0
10	501-1054-*BX ①	Left Side	X	X	X	X
10	501-1073BX ②	Left Side	0	0	0	0
10	501-1077BX ③	Left Side	0	0	0	0
11	105X1454BX	Right Support Angle	X	X	X	X
12	105Y1454BX	Left Support Angle	X	X	X	X
13	105-1457BX	Coil Support	2	2	2	2
14	147-055BX	Coil Support Offset	X	X	X	X
15	119-126-*BX ①	Side Grille	X	X	X	X
15	119-142BX ②	Side Grille	0	0	0	0
15	119-136BX ③	Side Grille	0	0	0	0
16	105-1450BX	Right Control Panel Angle	X	X	X	X
17	105-1451BX	Left Control Panel Angle	X	X	X	X
18	543-221-*BX ①	Heater Access Cover	X	X	X	X
18	543-228BX ②	Heater Access Cover	0	0	0	0
18	543-229BX ③	Heater Access Cover	0	0	0	0
19	507-382-*BX ①	Top Assembly	X	X	X	X
19	507-391BX ②	Top Assembly	0	0	0	0
19	507-392BX ③	Top Assembly	0	0	0	0
20	109-412BX	Lower Back	X	X	X	X
20	109-418BX ②	Lower Back	0	0	0	0
20	109-422BX ③	Lower Back	0	0	0	0
21	509-411BX	Upper Back	X	X	X	X
21	509-417BX ②	Upper Back	0	0	0	0
21	509-421BX ③	Upper Back	0	0	0	0
22	111-299BX	Outlet Air Frame Assembly	X	X	X	X
23	535-129BX	Heat Shield	X	X	X	X
24	113-150-*BX ①	Top Rain Flashing	X	X	X	X
24	113-359BX ③	Top Rain Flashing	0	0	0	0
25	539-406BX	Fresh Air Damper Assembly	X	X	X	X
25	543-222BX	Intake Blank-Off Plate	0	0	0	0
26	543-220BX	Exhaust Blank-Off Plate	X	X	X	X
27	543-248-*BX ①	Access Cover	X	X	X	X
27	543-250BX ②	Access Cover	0	0	0	0
27	543-251BX ③	Access Cover	0	0	0	0
NS	5252-033BX	Bard Nameplate	X	X	X	X

① Exterior cabinet parts are manufactured with various paint color options. To ensure the proper paint color is received, include the complete model and serial number of the unit for which cabinet parts are being ordered.

X – Standard Component
0 – Optional Component

② Exterior cabinet parts are manufactured from aluminum Code "A". #24 - Top rain flashing not available in aluminum; order 113-150-4 (Buckeye Gray).

③ Exterior cabinet parts are manufactured from stainless steel Code "S"

EXTERNAL PARTS – STANDARD & DEHUMIDIFICATION

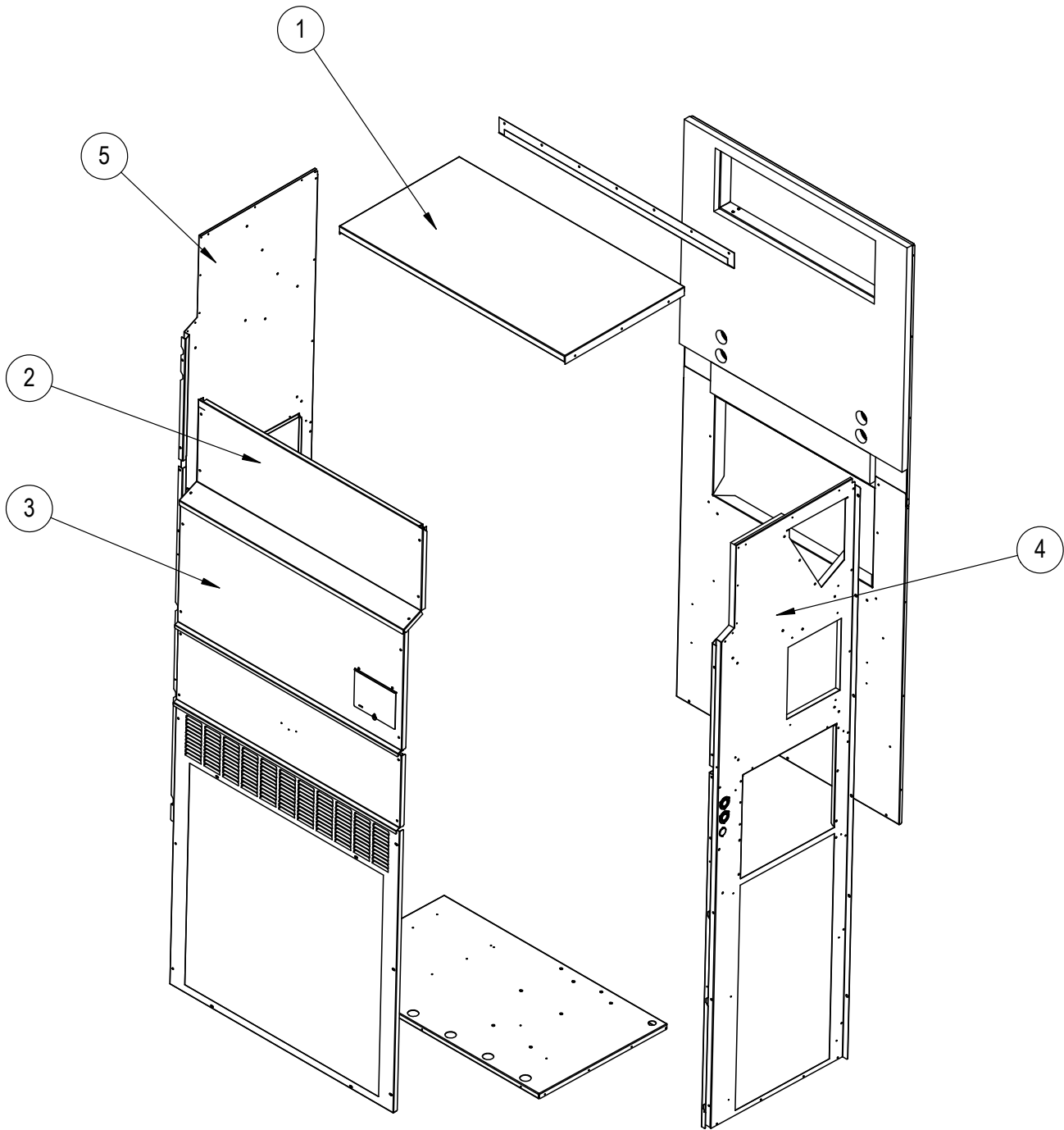
Dwg No.	Part Number	Description	W60AF-A, B, C, E, F, G, RC	W60AFDA, B, C	W72AF-A, B, C, F, G, RC	W72AFDA, B, C
1	127-574BX	Unit Base	X	X	X	X
1	127-584BX ③	Unit Base	O	O	O	O
2	113-762BX	Front Base Bracket	X	X	X	X
2	113-797BX ③	Front Base Bracket	O	O	O	O
3	113-140BX	Bottom Mounting Bracket	X	X	X	X
4	119-127-*BX ①	Front Grille	X	X	X	X
4	119-149BX ②	Front Grille	O	O	O	O
4	119-137BX ③	Front Grille	O	O	O	O
5	533-301-*BX ①	Control Panel Cover (Outer)	X	X	X	X
5	533-309BX ②	Control Panel Cover (Outer)	O	O	O	O
5	533-310BX ③	Control Panel Cover (Outer)	O	O	O	O
6	165-608-*BX ①	Rain Channel	X	X	X	X
6	165-609BX ②	Rain Channel	O	O	O	O
6	165-610BX ③	Rain Channel	O	O	O	O
7	515-324-*BX ①	Upper Front	X	X	X	X
7	515-329BX ②	Upper Front	O	O	O	O
7	515-331BX ③	Upper Front	O	O	O	O
8	152-717-*BX ①	Disconnect Access Door	X	X	X	X
8	152-723BX ②	Disconnect Access Door	O	O	O	O
8	152-724BX ③	Disconnect Access Door	O	O	O	O
9	501-1130-*BX ①	Right Side	X	X	X	X
9	501-1131BX ②	Right Side	O	O	O	O
9	501-1132BX ③	Right Side	O	O	O	O
10	501-1056-*BX ①	Left Side	X	X	X	X
10	501-1075BX ②	Left Side	O	O	O	O
10	501-1079BX ③	Left Side	O	O	O	O
11	105X1454BX	Right Support Angle	X	X	X	X
12	105Y1454BX	Left Support Angle	X	X	X	X
13	105-1457BX	Coil Support	2	2	2	2
14	147-054BX	Coil Support Offset	X	X	X	X
15	119-128-*BX ①	Side Grille	X	X	X	X
15	119-143BX ②	Side Grille	O	O	O	O
15	119-138BX ③	Side Grille	O	O	O	O
16	105-1450BX	Right Control Panel Angle	X	X	X	X
17	105-1451BX	Left Control Panel Angle	X	X	X	X
18	543-221-*BX ①	Heater Access Cover	X	X	X	X
18	543-228BX ②	Heater Access Cover	O	O	O	O
18	543-229BX ③	Heater Access Cover	O	O	O	O
19	507-382-*BX ①	Top	X	X	X	X
19	507-391BX ②	Top	O	O	O	O
19	507-392BX ③	Top	O	O	O	O
20	109-414BX	Lower Back	X	X	X	X
20	109-420BX ②	Lower Back	O	O	O	O
20	109-424BX ③	Lower Back	O	O	O	O
21	509-413BX	Upper Back	X	X	X	X
21	509-419BX ②	Upper Back	O	O	O	O
21	509-423BX ③	Upper Back	O	O	O	O
22	111-299BX	Outlet Air Frame Assembly	X	X	X	X
23	535-129BX	Heat Shield	X	X	X	X
24	113-150-*BX ①	Top Rain Flashing	X	X	X	X
24	113-359BX ③	Top Rain Flashing	O	O	O	O
25	539-406BX	Fresh Air Damper Assembly	X	X	X	X
25	543-222BX	Intake Blank-Off Plate	O	O	O	O
26	543-220BX	Exhaust Blank-Off Plate	X	X	X	X
27	543-248-*BX ①	Access Cover	X	X	X	X
27	543-250BX ②	Access Cover	O	O	O	O
27	543-251BX ③	Access Cover	O	O	O	O
NS	5252-033BX	Bard Nameplate	X	X	X	X

① Exterior cabinet parts are manufactured with various paint color options. To ensure the proper paint color is received, include the complete model and serial number of the unit for which cabinet parts are being ordered.

X – Standard Component
O – Optional Component

This page intentionally left blank

EXTERNAL PARTS - RECESSED CABINET



SEXP-1088

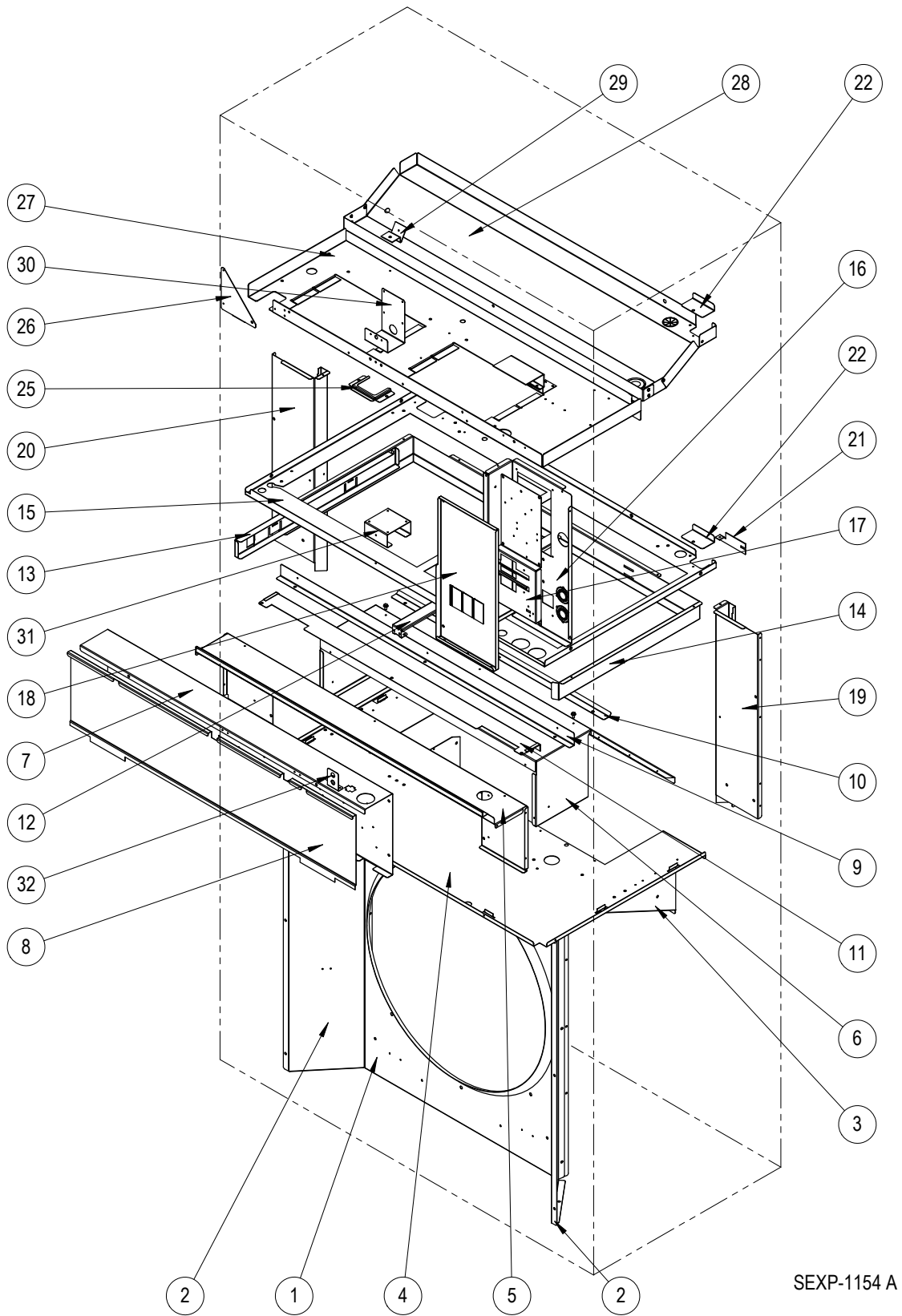
EXTERNAL PARTS – RECESSED CABINET

Drawing No.	Part Number	Description	W42AF-A, B, C, F, RC	W48AF-A, B, C, F, Q, RC	W60AF-A, B, C, E, F, Q, RC	W72AF-A, B, C, F, Q, RC
1	507-413-*BX ①	Top	X	X	X	X
2	515-354-*BX ①	Upper Front	X	X		
2	515-356-*BX ①	Upper Front			X	X
3	515-355-*BX ①	Center Front	X	X		
3	515-357-*BX ①	Center Front			X	X
4	501-1142-*BX ①	Right Side Assembly	X	X		
4	501-1144-*BX ①	Right Side Assembly			X	X
5	501-1143-*BX ①	Left Side Assembly	X	X		
5	501-1145-*BX ①	Left Side Assembly			X	X

① Exterior cabinet parts are manufactured with various paint color options. To ensure the proper paint color is received, include the complete model and serial number of the unit for which cabinet parts are being ordered.

NOTE: The replacement cabinet parts listed above are specific to the recessed unit W42/48/60/72AF wall mount air conditioner models. All other replacement cabinet external parts for these models are referenced on pages 2, 3 and 4.

INTERNAL PARTS – STANDARD & DEHUMIDIFICATION



SEXP-1154 A

INTERNAL PARTS – STANDARD & DEHUMIDIFICATION

Dwg No.	Part Number	Description	W42AF-A, B	W42AF-C, F, RC	W42AFDA, B	W42AFDC	W48AF-A, B	W48AF-C, F, RC	W48AF-Q	W48AFDA, B	W48AFDC
1	125-089BX	Fan Shroud	X	X	X	X	X	X	X	X	X
1	125-093BX ①	Fan Shroud	O	O	O	O	O	O	O	O	O
2	125-090BX	Fan Shroud Side Access Cover	X	X	X	X	X	X	X	X	X
2	125-094BX ①	Fan Shroud Side Access Cover	O	O	O	O	O	O	O	O	O
3	121-586BX	Condenser Partition Insert	X	X	X	X	X	X	X	X	X
4	121-585BX	Condenser Partition	X	X	X	X	X	X	X	X	X
4	121-599BX ①	Condenser Partition	O	O	O	O	O	O	O	O	O
5	521-630BX	Front Exhaust Partition Assembly	X	X	X	X	X	X	X	X	X
6	521-587BX	Exhaust Partition	X	X	X	X	X	X	X	X	X
7	Control Panel Assy.	See Control Panel on pages 16 – 18	X	X	X	X	X	X	X	X	X
8	133-330BX	Control Panel Cover (Inner)	X	X	X	X	X	X	X	X	X
9	105-1453BX	Front Vent Guide Rail	X	X	X	X	X	X	X	X	X
10	105-1452BX	Vent Guide Rail	X	X	X	X	X	X	X	X	X
11	135-409BX	Field Wire Shield	X	X	X	X	X	X	X	X	X
12	131-168BX	Filter Bracket	X	X	X	X	X	X	X	X	X
13	131-170BX	Filter Slide	X	X	X	X	X	X	X	X	X
14	131-169BX	Filter Rack Frame	X	X	X	X	X	X	X	X	X
15	121-583BX	Filter Partition	X	X	X	X	X	X	X	X	X
16	117-412BX	Upper Control Panel	X	X	X	X	X	X	X	X	X
17	127-575BX	Heater Control Base	X		X		X			X	
17	127-585BX	Heater Control Base - 460V		X		X		X	X		X
18	133-303BX	Upper Control Panel Cover	X		X		X			X	
18	133-304BX	Upper Control Panel Cover - 460V		X		X		X	X		X
19	135X393BX	Right Copper Chase	X	X	X	X	X	X	X	X	X
19	135X-97BX ①	Right Copper Chase	O	O	O	O	O	O	O	O	O
20	135Y393BX	Left Copper Chase	X	X	X	X	X	X	X	X	X
20	135-398BX ①	Left Copper Chase	O	O	O	O	O	O	O	O	O
21	113-796BX	Dehum Copper Retainer Bracket			X	X				X	X
22	137-920BX	Dehum Copper Fill Plate	X	X			X	X	X		
25	113-765	Grommet Retainer Bracket	X	X	X	X	X	X	X	X	X
26	141-492BX	Blower Partition Support	X	X	X	X	X	X	X	X	X
27	121-582BX	Blower Partition	X	X	X	X	X	X	X	X	X
28	523-161BX	Drain Pan Assembly	X	X	X	X	X	X	X	X	X
28	523-162BX ①②	Drain Pan Assembly	O	O	O	O	O	O	O	O	O
29	113-768BX	EEV mounting Bracket			X	X				X	X
30	113-787BX	Airflow Switch Bracket	O	O	O	O	O	O	O	O	O
31	113-788BX	Filter Switch Bracket	O	O	O	O	O	O	O	O	O
32	113-789BX	Filter Switch Light Bracket	O	O	O	O	O	O	O	O	O

① Internal parts are manufactured from stainless steel Code "S"

② For aluminum units, order 523-162 stainless steel drain pan.

X – Standard Component

O – Optional Component

INTERNAL PARTS – STANDARD & DEHUMIDIFICATION

Dwg No.	Part Number	Description	W60AF-A, B, E	W60AF-C, F, RC	W60AF-Q	W60AFDA, B	W60AFDC	W72AF-A, B	W72AF-C, F, RC	W72AF-Q	W72AFDA, B	W72AFDC
1	125-091BX	Fan Shroud	X	X	X	X	X	X	X	X	X	X
1	125-095BX ①	Fan Shroud	O	O	O	O	O	O	O	O	O	O
2	125-092BX	Fan Shroud Side Access Cover	X	X	X	X	X	X	X	X	X	X
2	125-096BX ①	Fan Shroud Side Access Cover	O	O	O	O	O	O	O	O	O	O
3	121-586BX	Condenser Partition Insert	X	X	X	X	X	X	X	X	X	X
4	121-585BX	Condenser Partition	X	X	X	X	X	X	X	X	X	X
4	121-599BX ①	Condenser Partition	O	O	O	O	O	O	O	O	O	O
5	521-630BX	Front Exhaust Partition Assembly	X	X	X	X	X	X	X	X	X	X
6	521-587BX	Exhaust Partition	X	X	X	X	X	X	X	X	X	X
7	Control Panel Assy.	See Control Panel on pages 16 – 18	X	X	X	X	X	X	X	X	X	X
8	133-330BX	Control Panel Cover (Inner)	X	X	X	X	X	X	X	X	X	X
9	105-1453BX	Front Vent Guide Rail	X	X	X	X	X	X	X	X	X	X
10	105-1452BX	Vent Guide Rail	X	X	X	X	X	X	X	X	X	X
11	135-409BX	Field Wire Shield	X	X	X	X	X	X	X	X	X	X
12	131-168BX	Filter Bracket	X	X	X	X	X	X	X	X	X	X
13	131-170BX	Filter Slide	X	X	X	X	X	X	X	X	X	X
14	131-169BX	Filter Rack Frame	X	X	X	X	X	X	X	X	X	X
15	121-583BX	Filter Partition	X	X	X	X	X	X	X	X	X	X
16	117-412BX	Upper Control Panel	X	X	X	X	X	X	X	X	X	X
17	127-575BX	Heater Control Base	X			X		X			X	
17	127-585BX	Circuit Breaker Base - 460V		X	X		X		X	X		X
18	133-303BX	Upper Control Panel Cover	X			X		X			X	
18	133-304BX	Upper Control Panel Cover - 460V		X	X		X		X	X		X
19	135X393BX	Right Copper Chase	X	X	X	X	X	X	X	X	X	X
19	135-397BX ①	Right Copper Chase	O	O	O	O	O	O	O	O	O	O
20	135Y393BX	Left Copper Chase	X	X	X	X	X	X	X	X	X	X
20	135-398BX ①	Left Copper Chase	O	O	O	O	O	O	O	O	O	O
21	113-796BX	Dehum Copper Retainer Bracket				X	X				X	X
22	137-920BX	Dehum Copper Fill Plate	X	X	X			X	X	X		
25	113-765	Grommet Retainer Bracket	X	X	X	X	X	X	X	X	X	X
26	141-492BX	Blower Partition Support	X	X	X	X	X	X	X	X	X	X
27	121-582BX	Blower Partition	X	X	X	X	X	X	X	X	X	X
28	523-161BX	Drain Pan Assembly	X	X	X	X	X	X	X	X	X	X
28	523-162BX ①②	Drain Pan Assembly	O	O	O	O	O	O	O	O	O	O
29	113-768BX	EEV mounting Bracket				X	X				X	X
30	113-787BX	Airflow Switch Bracket	O	O	O	O	O	O	O	O	O	O
31	113-788BX	Filter Switch Bracket	O	O	O	O	O	O	O	O	O	O
32	113-789BX	Filter Switch Light Bracket	O	O	O	O	O	O	O	O	O	O

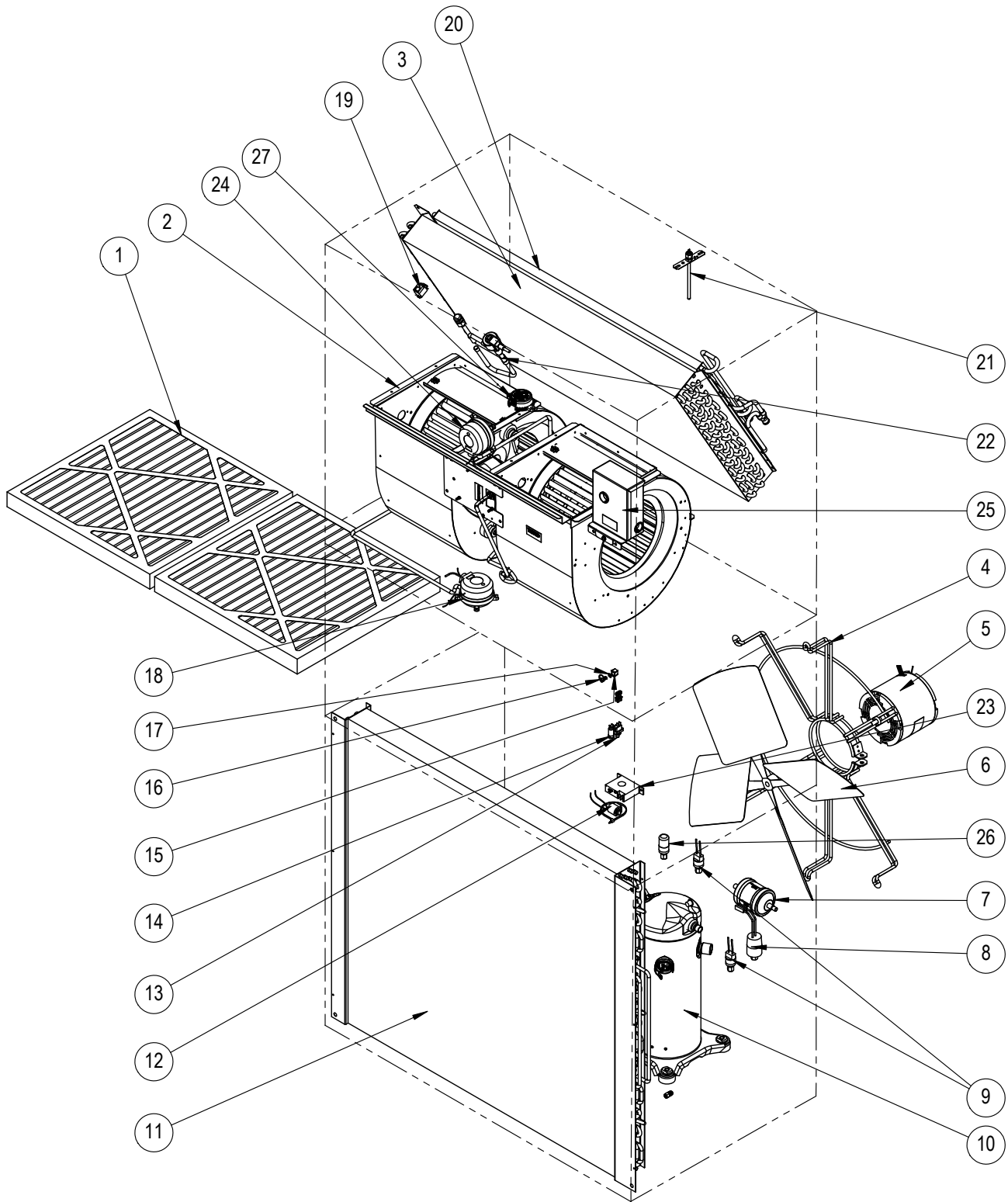
① Internal parts are manufactured from stainless steel Code "S"
 ② For aluminum units, order 523-162 stainless steel drain pan.

X – Standard Component
 O – Optional Component

Refer to drawing on page 8

This page intentionally left blank

FUNCTIONAL COMPONENTS – STANDARD & DEHUMIDIFICATION



SEXP-1155

FUNCTIONAL COMPONENTS – STANDARD & DEHUMIDIFICATION

Dwg No.	Part Number	Description	W42AF-A	W42AF-B	W42AF-C	W42AF-F	W42AFRC	W42AFDA	W42AFDB	W42AFDC	W48AF-A	W48AF-B	W48AF-C	W48AF-F	W48AF-Q	W48AFRC	W48AFDA	W48AFDB	W48AFDC
1	7004-012	Air Filter 1" Throw-Away (20 x 20 x 1)	2	2	2	2	2	2	2	2	2	2	2	2	2	2	2	2	2
1	7003-085 ②	Air Filter 1" Washable (20 x 20 x 1)	2	2	2	2	2	2	2	2	2	2	2	2	2	2	2	2	2
1	7004-052 ②	Air Filter 2" Merv 8 (20 x 20 x 2)	2	2	2	2	2	2	2	2	2	2	2	2	2	2	2	2	2
1	7004-060 ②	Air Filter 2" Merv 11 (20 x 20 x 2)	2	2	2	2	2	2	2	2	2	2	2	2	2	2	2	2	2
1	7004-063 ②	Air Filter 2" Merv 13 (20 x 20 x 2)	2	2	2	2	2	2	2	2	2	2	2	2	2	2	2	2	2
2	900-366-0155BX	Programmed Blower Assembly	X	X		X	X	X	X										
2	900-367-0156BX	Programmed Blower Assembly			X					X									
2	900-368-0157BX	Programmed Blower Assembly								X	X								
2	900-369-0158BX	Programmed Blower Assembly											X						X
2	900-368-001BX	Blower Assembly												X					
3	917-0547BX	Evaporator Coil w/Distributor Assy.	X	X	X	X	X												
3	917-0549BX	Evaporator Coil - Coated w/Distributor Assy.	0	0	0	0	0												
3	917-0590BX	Evaporator Coil w/Distributor Assy.									X	X	X	X	X	X			
3	917-0605BX	Evaporator Coil - Coated w/Distributor Assy.									0	0	0	0	0	0			
3	917-0368BX	Evaporator Coil w/Distributor Assy.						X	X	X									
3	917-0369BX	Evaporator Coil - Coated w/Distributor Assy.						0	0	0									
3	917-0606BX	Evaporator Coil w/Distributor Assy.															X	X	X
3	917-0608BX	Evaporator Coil - Coated w/Distributor Assy.															0	0	0
4	8200-004BX	Fan Motor Mount	X	X	X	X	X	X	X	X	X	X	X	X	X	X	X	X	X
4	8200-051BX ①	Fan Motor Mount - Stainless Steel	0	0	0	0	0	0	0	0	0	0	0	0	0	0	0	0	0
5	8105-078BX	Condenser Motor	X	X				X	X		X	X			X		X	X	
5	8105-071BX	Condenser Motor - 460V			X		X			X			X			X			X
5	8105-080BX	Condenser Motor - 460V				X							X						
6	5151-060BX	Fan Blade	X	X	X	X	X	X	X	X	X	X	X	X	X	X	X	X	X
6	5151C060BX ①	Fan Blade - Coated	0	0	0	0	0	0	0	0	0	0	0	0	0	0	0	0	0
7	5201-022BX	Filter Drier	X	X	X	X	X	X	X	X	X	X	X	X	X	X	X	X	X
8	CMA-39	Low Ambient Control (LAC)	0	0	0	0	0	0	0	0	0	0	0	0	0	0	0	0	0
9	8406-166BX	Low Pressure Switch	X	X	X	X	X	X	X	X	X	X	X	X	X	X	X	X	X
9	8406-167BX	High Pressure Switch	X	X	X	X	X	X	X	X	X	X	X	X	X	X	X	X	X
10	8000-503BX	Compressor	X					X											
10	8000-504BX	Compressor		X					X										
10	8000-505BX	Compressor			X		X			X									
10	8000-506BX	Compressor									X						X		
10	8000-507BX	Compressor										X						X	
10	8000-508BX	Compressor				X							X			X			X
10	8000-509BX	Compressor												X					
10	8000-512BX	Compressor													X				
11	5051-222BX	Condenser Coil	X	X	X	X	X	X	X	X	X	X	X	X	X	X	X	X	X
11	5054-222BX	Condenser Coil - Coated	0	0	0	0	0	0	0	0	0	0	0	0	0	0	0	0	0
12	8408-055BX	Outdoor Temperature Sensor	0	0	0	0	0	0	0	0	0	0	0	0	0	0	0	0	0
13	3000-1638BX	Dirty Filter Reset Switch	0	0	0	0	0	0	0	0	0	0	0	0	0	0	0	0	0
14	8611-094BX	Red Indicator Light - 24VAC	0	0	0	0	0	0	0	0	0	0	0	0	0	0	0	0	0
15	1171-023	1/4 Turn Receptacle	X	X	X	X	X	X	X	X	X	X	X	X	X	X	X	X	X
16	1171-022	1/4 Turn Fastener	X	X	X	X	X	X	X	X	X	X	X	X	X	X	X	X	X
17	1171-024	1/4 Turn Retainer	X	X	X	X	X	X	X	X	X	X	X	X	X	X	X	X	X
18	8301-057BX	Filter Pressure Switch	0	0	0	0	0	0	0	0	0	0	0	0	0	0	0	0	0
19	CMC-29	Freeze Protection Thermostat	0	0	0	0	0	0	0	0	0	0	0	0	0	0	0	0	0
20	5051-221BX	Reheat Coil						X	X	X							X	X	X
20	5054-221BX	Reheat Coil - Coated						0	0	0							0	0	0
21	910-1224BX	Supply Air Temperature Sensor	0	0	0	0	0	0	0	0	0	0	0	0	0	0	0	0	0
22	800-0508BX	Distributor Assembly	X	X	X	X	X												
22	800-0509BX	Distributor Assembly									X	X	X	X	X	X			
22	800-0424BX	Distributor Assembly						X	X	X									
22	800-0455BX	Distributor Assembly															X	X	X
22	5651-245BX	Electronic Expansion Valve (EEV) Assembly						X	X	X							X	X	X
22	905-0737BX	Electronic Expansion Valve (EEV) Assembly						X	X	X							X	X	X
23	8301-013BX	Current Sensor	0	0	0	0	0	0	0	0	0	0	0	0	0	0	0	0	0
24	8301-057BX	Airflow Pressure Switch	0	0	0	0	0	0	0	0	0	0	0	0	0	0	0	0	0
25	910-2050-005BX	EEV Controller (see EEV Controller Assembly)						X	X	X							X	X	X
26	8406-158BX	Low Pressure Transducer - Blue						X	X	X							X	X	X
26	3000-1603BX	Transducer Wire Assembly - Connects to Transducer						X	X	X							X	X	X
27	8301-110BX	RDS Sensor	X	X	X	X	X	X	X	X	X	X	X	X	X	X	X	X	X
NS	8401-036BX	RDS Relay	X	X	X	X	X	X	X	X	X	X	X	X	X	X	X	X	X
NS	CMA-39	LAC Kit = Item #'s 8,12,19	0	0	0	0	0	0	0	0	0	0	0	0	0	0	0	0	0
NS	CMC-33	Dirty Filter Switch Kit = Item #'s 13,14,18	0	0	0	0	0	0	0	0	0	0	0	0	0	0	0	0	0
NS	CMA-44	DDC Kit = Item #'s 8,12,13,14,18,19,21,23,24	0	0	0	0	0	0	0	0	0	0	0	0	0	0	0	0	0
NS	5650-051BX	Dehumidification Valve						X	X	X							X	X	X
NS	5650-042BX	Dehum Valve Solenoid, Red Casing (Ranco)						X	X	X							X	X	X
NS	5650-046BX	Dehum Valve Solenoid, Black Casing (San Hua)						X	X	X							X	X	X
NS	5651-219BX	Check Valve						X	X	X							X	X	X
NS	5451-024	Tubing Isolation Grommet	2	2	2	2	2	4	4	4	2	2	2	2	2	2	4	4	4
NS	6031-009	Coremax Valve Core	2	2	2	2	2	2	2	2	2	2	2	2	2	2	2	2	2
NS	1171-028	Control Panel Door Clip	4	4	4	4	4	4	4	4	4	4	4	4	4	4	4	4	4
NS	1171-057	Control Panel Door Screw	4	4	4	4	4	4	4	4	4	4	4	4	4	4	4	4	4
NS	1171-027	Control Panel Door Screw Retainer	4	4	4	4	4	4	4	4	4	4	4	4	4	4	4	4	4
NS	5650-054	Molded Plug for Dehum Valve						X	X	X							X	X	X
NS	910-2188BX	460V Transformer Assembly														X			
NS	910-2189BX	460V Transformer Assembly					X												
NS	8620-343	UV-C Field Install Kit	0	0	0	0	0	0	0	0	0	0	0	0	0	0	0	0	0
NS	8620-370	AIR4 NBPI Field Install Kit	0	0	0	0	0	0	0	0	0	0	0	0	0	0	0	0	0

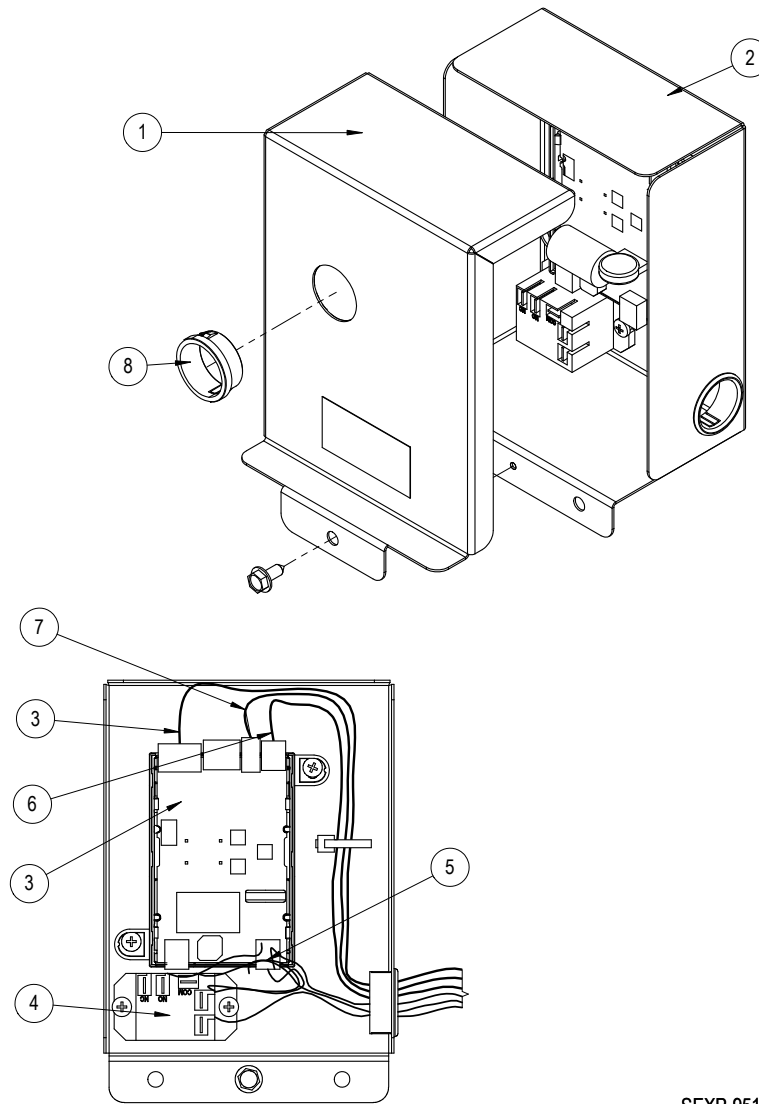
NS – Not Shown
 ① – Used with stainless steel cabinet option
 ② – Optional on these models

X – Standard Component
 0 – Optional Component

FUNCTIONAL COMPONENTS – STANDARD & DEHUMIDIFICATION

Dwg No.	Part Number	Description	W60AF-A	W60AF-B	W60AF-C	W60AF-E	W60AF-F	W60AF-Q	W60AFRC	W60AFDA	W60AFDB	W60AFDC	W72AF-A	W72AF-B	W72AF-C	W72AF-F	W72AF-Q	W72AFRC	W72AFDA	W72AFDB	W72AFDC	
1	7004-012	Air Filter 1" Throw-Away (20 x 20 x 1)	2	2	2	2	2	2	2	2	2	2	2	2	2	2	2	2	2	2	2	2
1	7003-085	Air Filter 1" Washable (20 x 20 x 1)	2	2	2	2	2	2	2	2	2	2	2	2	2	2	2	2	2	2	2	2
1	7004-052	Air Filter 2" Merv 8 (20 x 20 x 2)	2	2	2	2	2	2	2	2	2	2	2	2	2	2	2	2	2	2	2	2
1	7004-060	Air Filter 2" Merv 11 (20 x 20 x 2)	2	2	2	2	2	2	2	2	2	2	2	2	2	2	2	2	2	2	2	2
1	7004-063	Air Filter 2" Merv 13 (20 x 20 x 2)	2	2	2	2	2	2	2	2	2	2	2	2	2	2	2	2	2	2	2	2
2	900-368-0159BX	Programmed Blower Assembly	X	X		X	X		X	X	X											
2	900-368-0161BX	Programmed Blower Assembly											X	X					X	X		
2	900-369-0160BX	Programmed Blower Assembly			X							X										
2	900-369-0162BX	Programmed Blower Assembly											X									X
2	900-368-002BX	Blower Assembly						X														
2	900-368-003BX	Blower Assembly															X					
3	917-0553BX	Evaporator Coil w/Distributor Assy.	X	X	X	X	X	X	X													
3	917-0555BX	Evaporator Coil - Coated w/Distributor Assy.	0	0	0	0	0	0	0													
3	917-0556BX	Evaporator Coil w/Distributor Assy.											X	X	X	X	X					
3	917-0558BX	Evaporator Coil - Coated w/Distributor Assy.											0	0	0	0	0	0				
3	917-0376BX	Evaporator Coil w/Distributor Assy.								X	X	X								X	X	X
3	917-0377BX	Evaporator Coil - Coated w/Distributor Assy.								0	0	0								0	0	0
4	8200-004BX	Fan Motor Mount	X	X	X	X	X	X	X	X	X	X										
4	8200-051BX	Fan Motor Mount - Stainless Steel	0	0	0	0	0	0	0	0	0	0										
4	8200-049BX	Fan Motor Mount											X	X	X	X	X	X	X	X	X	X
4	8200-052BX	Fan Motor Mount - Stainless Steel											0	0	0	0	0	0	0	0	0	0
5	8105-078BX	Condenser Motor	X	X			X	X	X	X	X											
5	8105-071BX	Condenser Motor - 460V			X				X			X										
5	8105-080BX	Condenser Motor - 460V				X	X				X											
5	8106-070BX	Condenser Motor											X	X			X		X	X		
5	8106-071BX	Condenser Motor - 460V													X			X				X
5	8106-085BX	Condenser Motor														X						
6	5151-060BX	Fan Blade	X	X	X	X	X	X	X	X	X	X										
6	5151C060BX	Fan Blade - Coated	0	0	0	0	0	0	0	0	0	0										
6	5151-063BX	Fan Blade											X	X	X	X	X	X	X	X	X	X
6	5151C063BX	Fan Blade - Coated											0	0	0	0	0	0	0	0	0	0
7	5201-022BX	Filter Drier	X	X	X	X	X	X	X	X	X	X	X	X	X	X	X	X	X	X	X	X
8	CMA-39	Low Ambient Control (LAC)	0	0	0	0	0	0	0	0	0	0	0	0	0	0	0	0	0	0	0	0
9	8406-166BX	Low Pressure Switch	X	X	X	X	X	X	X	X	X	X	X	X	X	X	X	X	X	X	X	X
9	8406-167BX	High Pressure Switch	X	X	X	X	X	X	X	X	X	X	X	X	X	X	X	X	X	X	X	X
10	8000-510BX	Compressor	X						X		X											
10	8000-511BX	Compressor		X						X		X										
10	8000-512BX	Compressor			X			X			X											
10	8000-513BX	Compressor						X														
10	8000-514BX	Compressor											X						X			
10	8000-515BX	Compressor				X								X						X		
10	8000-516BX	Compressor					X								X							X
10	8000-517BX	Compressor														X						
10	8000-539BX	Compressor															X					
11	5051-223BX	Condenser Coil	X	X	X	X	X	X	X	X	X	X	X	X	X	X	X	X	X	X	X	X
11	5054-223BX	Condenser Coil - Coated	0	0	0	0	0	0	0	0	0	0	0	0	0	0	0	0	0	0	0	0
12	8408-055BX	Outdoor Temperature Sensor	0	0	0	0	0	0	0	0	0	0	0	0	0	0	0	0	0	0	0	0
13	3000-1638BX	Dirty Filter Reset Switch	0	0	0	0	0	0	0	0	0	0	0	0	0	0	0	0	0	0	0	0
14	8611-094BX	Red Indicator Light - 24VAC	0	0	0	0	0	0	0	0	0	0	0	0	0	0	0	0	0	0	0	0
15	1171-023	1/4 Turn Receptacle	X	X	X	X	X	X	X	X	X	X	X	X	X	X	X	X	X	X	X	X
16	1171-022	1/4 Turn Fastener	X	X	X	X	X	X	X	X	X	X	X	X	X	X	X	X	X	X	X	X
17	1171-024	1/4 Turn Retainer	X	X	X	X	X	X	X	X	X	X	X	X	X	X	X	X	X	X	X	X
18	8301-057BX	Filter Pressure Switch	0	0	0	0	0	0	0	0	0	0	0	0	0	0	0	0	0	0	0	0
19	CMC-29	Freeze Protection Thermostat	0	0	0	0	0	0	0	0	0	0	0	0	0	0	0	0	0	0	0	0
20	5051-221BX	Reheat Coil							X	X	X									X	X	X
20	5054-221BX	Reheat Coil - Coated							0	0	0								0	0	0	0
21	910-1224BX	Supply Air Temperature Sensor	0	0	0	0	0	0	0	0	0	0	0	0	0	0	0	0	0	0	0	0
22	800-0510BX	Distributor Assembly	X	X	X	X	X	X	X													
22	800-0511BX	Distributor Assembly											X	X	X	X	X	X				
22	800-0455BX	Distributor Assembly								X	X	X								X	X	X
22	5651-248BX	Electronic Expansion Valve (EEV) Assembly								X	X	X								X	X	X
22	905-0745BX	Electronic Expansion Valve (EEV) Assembly								X	X	X								X	X	X
23	8301-013BX	Current Sensor	0	0	0	0	0	0	0	0	0	0	0	0	0	0	0	0	0	0	0	0
24	8301-057BX	Airflow Pressure Switch	0	0	0	0	0	0	0	0	0	0	0	0	0	0	0	0	0	0	0	0
25	910-2050-005BX	EEV Controller (see EEV Controller Assembly)							X	X	X									X	X	X
26	8406-158BX	Low Pressure Transducer - Blue							X	X	X									X	X	X
26	3000-1603BX	Transducer Wire Assy. - Connects to Transducer							X	X	X									X	X	X
27	8301-110BX	RDS Sensor	X	X	X	X	X	X	X	X	X	X	X	X	X	X	X	X	X	X	X	X
NS	8401-036BX	RDS Relay	X	X	X	X	X	X	X	X	X	X	X	X	X	X	X	X	X	X	X	X
NS	CMA-39	LAC Kit = Item #'s 8,12,19	0	0	0	0	0	0	0	0	0	0	0	0	0	0	0	0	0	0	0	0
NS	CMC-33	Dirty Filter Switch Kit = Item #'s 13,14,18	0	0	0	0	0	0	0	0	0	0	0	0	0	0	0	0	0	0	0	0
NS	CMA-44	DDC Kit = Item #'s 8,12,13,14,18,19,21,23,24	0	0	0	0	0	0	0	0	0	0	0	0	0	0	0	0	0	0	0	0
NS	5650-051BX	Dehumidification Valve							X	X	X									X	X	X
NS	5650-042BX	Dehum Valve Solenoid, Red Casing (Ranco)							X	X	X									X	X	X
NS	5650-046BX	Dehum Valve Solenoid, Black Casing (San Hua)							X	X	X									X	X	X
NS	5651-219BX	Check Valve							2	2	2									2	2	2
NS	5451-024	Tubing Isolation Grommet	2	2	2	2	2	2	2	4	4	4	2	2	2	2	2	2	2	4	4	4
NS	6031-009	Coremax Valve Core	2	2	2	2	2	2	2	2	2	2	2	2	2	2	2	2	2	2	2	2
NS	1171-028	Control Panel Door Clip	4	4	4	4	4	4	4	4	4	4	4	4	4	4	4	4	4	4	4	4
NS	1171-057	Control Panel Door Screw	4	4	4	4	4	4	4	4	4	4	4	4	4	4	4	4	4	4	4	4
NS	1171-027	Control Panel Door Screw Retainer	4	4	4	4	4	4	4	4	4	4	4	4	4	4	4	4	4	4	4	4
NS	5650-054BX	Molded Plug for Dehum Valve							X	X	X									X	X	X
NS	910-2188BX	460V Transformer Assembly							X										X			
NS	8620-343	UV-C Field Install Kit	0	0	0	0	0	0	0	0	0	0	0	0	0	0	0	0	0	0	0	0
NS	8620-370	AIR4 NBPI Field Install Kit	0	0	0	0	0	0	0	0	0	0	0	0	0	0	0	0	0	0	0	0

EEV CONTROLLER ASSEMBLY

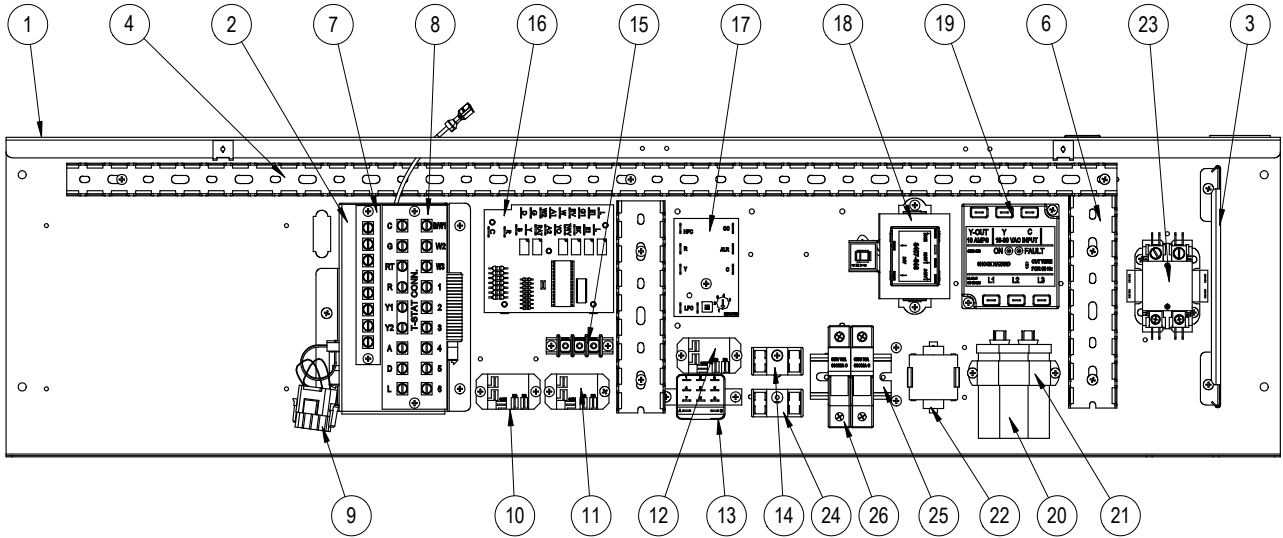


SEXP-951

910-2050-005BX

Dwg No.	Part Number	Description	
1	143-219BX	EEV Control Box Cover	X
2	127-572BX	EEV Control Box	X
3	8301-079-0005BX	EEV Control Module & Stator Cable	X
3	5651-246BX	EEV Stator Cable Only	X
4	8201-130BX	Control Relay	X
5	3000-1602BX	Main Wire Assembly	X
6	3000-1611BX	Transducer Wire Assembly – Connects to EEV Board	X
NS	3000-1603BX	Transducer Wire Assembly – Connects to Transducer	X
7	8408-056BX	EEV Thermistor	X
8	8611-075	Clear Snap Plug	X

CONTROL PANEL – STANDARD & DEHUMIDIFICATION



SEXP-928 B

This drawing to be used for reference for pages 17 and 18

CONTROL PANEL – STANDARD & DEHUMIDIFICATION

Dwg No.	Part Number	Description	W42AF-A	W42AF-B	W42AF-C	W42AFRC	W42AF-F	W42AFDA	W42AFDB	W42AFDC	W48AF-A	W48AF-B	W48AF-C	W48AFRC	W48AF-F	W48AF-Q	W48AFDA	W48AFDB	W48AFDC	
1	117-455BX	Control Panel	X	X	X		X	X	X	X	X	X	X	X	X	X	X	X	X	X
1	117-456BX	Control Panel				X								X						
2	910-2061BX	Complete Low Voltage Box Assembly (Sheet metal, Terminal Strip, & Wire Harness)	X	X	X	X	X	X	X	X	X	X	X	X	X	X	X	X	X	X
3	135-394BX	Wire Shield	X	X	X	X	X	X	X	X	X	X	X	X	X	X	X	X	X	X
4	8611-140-3208BX	Cable Duct - 32.5"	X	X	X	X	X	X	X	X	X	X	X	X	X	X	X	X	X	X
6	8611-140-0608BX	Cable Duct - 6.5" x 1.5" wide	2	2	2	2	2	2	2	2	2	2	2	2	2	2	2	2	2	2
7	8607-021BX	Low Voltage Terminal Strip - 8 term.	0	0	0	0	0	0	0	0	0	0	0	0	0	0	0	0	0	0
8	8607-063BX	Low Voltage Terminal Strip - 18 term.	X	X	X	X	X	X	X	X	X	X	X	X	X	X	X	X	X	X
9	3000-1524BX	Vent Jumper Plug (used when no vent option)	X	X	X	X	X	X	X	X	X	X	X	X	X	X	X	X	X	X
10	8201-130BX	Alarm Relay (Kit = CMC-35)	0	0	0	0	0	0	0	0	0	0	0	0	0	0	0	0	0	0
11	8201-130BX	Blower Speed Relay	X	X	X	X	X	X	X	X	X	X	X	X	X	X	X	X	X	X
12	8201-130BX	Dehumidification Control Relay						X	X	X								X	X	X
13	8201-159BX	Dirty Filter Relay (Kit = CMC-33)	0	0	0	0	0	0	0	0	0	0	0	0	0	0	0	0	0	0
14	8607-017BX	Terminal Block (LAC Kit = CMA-39)	0	0	0	0	0	0	0	0	0	0	0	0	0	0	0	0	0	0
15	8607-042BX	Blower Speed Terminal Block	X	X	X	X	X	X	X	X	X	X	X	X	X	X	X	X	X	X
16	8201-113BX	Dehumidification Logic Board						X	X	X								X	X	X
17	8201-176BX	Compressor Control Module	X	X	X	X	X	X	X	X	X	X	X	X	X	X	X	X	X	X
18	8407-068BX	Transformer	X	X		X	X	X	X		X	X		X	X	X	X	X	X	
18	8407-069BX	Transformer			X					X			X							X
19	8201-174BX	3 Phase Line Monitor 50/60 Hz		X	X	X	X		X	X		X	X	X	X	X		X	X	
20	8552-004BX	Outdoor Capacitor			X	X				X			X	X						X
20	8552-005BX	Outdoor Capacitor		X			X		X			X			X	X		X		
20	8552-050BX	Compressor Capacitor	X								X									
20	8552-079BX	Compressor Capacitor										X						X		
20	8552-080BX	Compressor Capacitor					X													
21	8550-003BX	Capacitor Bracket 1-1/4" Oval		X	X	X	X		X	X		X	X	X	X	X		X	X	
21	8550-008BX	Capacitor Bracket 2-1/2" Round	X					X			X							X		
22	8551-004BX	Start Device (PTCR) (Kit = CMC-32)	0					0			0							0		
23	8401-034BX	Contact 2-Pole 40 Amp	X					X			X							X		
23	8401-035BX	Contact 3-Pole 25 Amp		X	X	X	X		X	X		X	X	X	X	X		X	X	
24	8607-017BX	Terminal Block 240V 2 Terminal				X								X						
25	8611-210BX	35MM DIN Rail 2-1/2"				X								X		X				
26	8614-043	10A Fuse														2				
26	8614-047	3.2 Fuse				2								2						
26	8614-058	Fuse Block			0		0		0		0		0	0	0					0
NS	8611-144	End clamp for DIN Rail				X								X		X				
NS	8615-038BX	Circuit Breaker 35A 2 Pole Ⓞ	X					X												
NS	8615-039BX	Circuit Breaker 45A 2 Pole Ⓞ		X					X									X		
NS	8615-052BX	Circuit Breaker 30A 3 Pole Ⓞ							X		X								X	
NS	8615-095BX	Toggle Disconnect			X	X	X			X		X	X	X	X					X
NS	4211A101	Wiring Diagram	X	X	X	X	X	X	X	X	X	X	X	X	X	X	X	X	X	X
NS	4213-128	Wiring Diagram	X							X										
NS	4213-129	Wiring Diagram						X										X		
NS	4213-228	Wiring Diagram		X							X									
NS	4213-229	Wiring Diagram							X										X	
NS	4213-328	Wiring Diagram			X								X							
NS	4213-329	Wiring Diagram								X										X
NS	4213-331	Wiring Diagram				X								X						
NS	4213-628	Wiring Diagram					X								X					
NS	4213-728	Wiring Diagram														X				
NS	3000-1613BX	Blower Power Plug	X	X	X	X		X	X	X	X	X	X	X		X	X	X	X	X
NS	3000-1645BX	Blower Power Plug					X								X					
NS	3000-1614BX	Blower Speed Plug	X	X	X	X	X	X	X	X	X	X	X	X	X	X	X	X	X	X
NS	3000-1222BX	Compressor Plug/Harness	X					X			X							X		
NS	3000-1230BX	Compressor Plug/Harness		X	X	X	X		X	X		X	X	X	X	X			X	X
NS	3003-164BX	Control Panel Wire Harness	X								X									
NS	3003-165BX	Control Panel Wire Harness		X	X	X					X	X	X							
NS	3003-166BX	Control Panel Wire Harness					X								X					
NS	3003-167BX	Control Panel Wire Harness														X				
NS	3003-168BX	Control Panel Wire Harness						X									X			
NS	3003-169BX	Control Panel Wire Harness							X	X								X	X	
NS	3000-1693BX	Low Voltage Terminal Block Wire Harness	X	X	X	X	X	X	X	X	X	X	X	X	X	X	X	X	X	X

NS = Not Shown

Ⓞ Circuit breakers listed are for units without electric heat, "OZ" models. See heater replacement parts manual for units with electric heat.

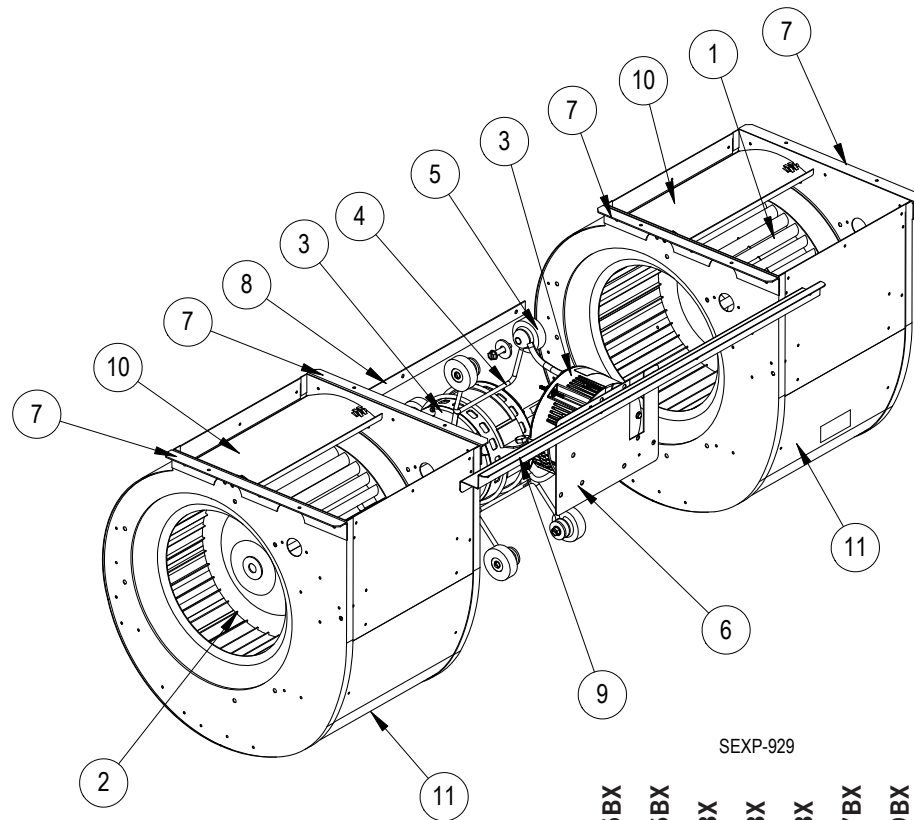
X – Standard Component
O – Optional Component

Manual 2110-1480
Page 17 of 19

CONTROL PANEL – STANDARD & DEHUMIDIFICATION

Dwg No.	Part Number	Description	W60AF-A	W60AF-B	W60AF-C	W60AFRC	W60AF-E	W60AF-F	W60AF-Q	W60AFDA	W60AFDB	W60AFDC	W72AF-A	W72AF-B	W72AF-C	W72AFRC	W72AF-F	W72AF-Q	W72AFDA	W72AFDB	W72AFDC	
1	117-455BX	Control Panel	X	X	X		X	X	X	X	X	X	X	X	X	X	X	X	X	X	X	X
1	117-456BX	Control Panel				X																
2	910-2061BX	Complete Low Voltage Box Assembly (Sheet metal, Terminal Strip, & Wire Harness)	X	X	X	X	X	X	X	X	X	X	X	X	X	X	X	X	X	X	X	X
3	135-394BX	Wire Shield	X	X	X	X	X	X	X	X	X	X	X	X	X	X	X	X	X	X	X	X
4	8611-140-3208BX	Cable Duct - 32.5"	X	X	X	X	X	X	X	X	X	X	X	X	X	X	X	X	X	X	X	X
6	8611-244-0608BX	Cable Duct - 6.5" x 1.5" wide	2	2	2	2	2	2	2	2	2	2	2	2	2	2	2	2	2	2	2	2
7	8607-021BX	Low Voltage Terminal Strip - 8 term.	0	0	0	0	0	0	0	0	0	0	0	0	0	0	0	0	0	0	0	0
8	8607-063BX	Low Voltage Terminal Strip - 18 term.	X	X	X	X	X	X	X	X	X	X	X	X	X	X	X	X	X	X	X	X
9	3000-1524BX	Vent Jumper Plug (used when no vent option)	X	X	X	X	X	X	X	X	X	X	X	X	X	X	X	X	X	X	X	X
10	8201-130BX	Alarm Relay (Kit = CMC-35)	0	0	0	0	0	0	0	0	0	0	0	0	0	0	0	0	0	0	0	0
11	8201-130BX	Blower Speed Relay	X	X	X	X	X	X	X	X	X	X	X	X	X	X	X	X	X	X	X	X
12	8201-130BX	Dehumidification Control Relay								X	X	X								X	X	X
13	8201-159BX	Dirty Filter Relay (Kit = CMC-33)	0	0	0	0	0	0	0	0	0	0	0	0	0	0	0	0	0	0	0	0
14	8607-017BX	Terminal Block (LAC Kit = CMA-39)	0	0	0	0	0	0	0	0	0	0	0	0	0	0	0	0	0	0	0	0
15	8607-042BX	Blower Speed Terminal Block	X	X	X	X	X	X	X	X	X	X	X	X	X	X	X	X	X	X	X	X
16	8201-113BX	Dehumidification Logic Board								X	X	X								X	X	X
17	8201-176BX	Compressor Control Module	X	X	X	X	X	X	X	X	X	X	X	X	X	X	X	X	X	X	X	X
18	8407-068BX	Transformer	X	X		X	X	X	X	X	X		X	X			X	X	X	X		
18	8407-069BX	Transformer			X						X				X	X						X
19	8201-174BX	3 Phase Line Monitor 50/60 Hz		X	X	X	X	X	X	X	X		X	X	X	X	X	X	X		X	X
20	8552-004BX	Outdoor Capacitor			X	X					X			X			X	X		X		
20	8552-005BX	Outdoor Capacitor		X			X	X	X		X			X	X							X
20	8552-097BX	Compressor Capacitor	X							X			X							X		
21	8550-003BX	Capacitor Bracket 1-1/4" Oval		X	X	X	X	X	X		X	X		X	X	X	X	X	X		X	X
21	8550-008BX	Capacitor Bracket 2-1/2" Round	X							X			X							X		
22	8551-004BX	Start Device (PTCR) (Kit = CMC-32)	0							0			0							0		
23	8401-034BX	Contacto 2-Pole 40 Amp	X							X			X							X		
23	8401-035BX	Contacto 3-Pole 25 Amp		X	X	X	X	X	X		X	X		X	X	X	X	X	X		X	X
24	8607-017BX	Terminal Block 240V 2 Terminal				X										X		X				
25	8611-210BX	35MM DIN Rail 2-1/2"				X			X							X		X				
26	8614-043	10A Fuse							2													
26	8614-046	5A Fuse														2						
26	8614-047	3.2 Fuse				2																
26	8614-058	Fuse Block			0		0	0			0			0		0	0					0
NS	8611-144	End Clamp for DIN Rail				X			X							X		X				
NS	8615-039BX	Circuit Breaker 45A 2 Pole ⊕	X							X												
NS	8615-041BX	Circuit Breaker 60A 2 Pole ⊕											X							X		
NS	8615-044BX	Circuit Breaker 45A 3 Pole ⊕					X							X							X	
NS	8615-042BX	Circuit Breaker 35A 3 Pole ⊕		X							X											X
NS	8615-095BX	Toggle Disconnect			X	X		X	X		X				X	X	X	X	X			X
NS	4211A101	Wiring Diagram	X	X	X	X	X	X	X	X	X	X	X	X	X	X	X	X	X	X	X	X
NS	4213-128	Wiring Diagram	X										X									
NS	4213-129	Wiring Diagram								X											X	
NS	4213-228	Wiring Diagram		X			X							X								
NS	4213-229	Wiring Diagram									X										X	
NS	4213-328	Wiring Diagram			X										X							
NS	4213-329	Wiring Diagram									X											X
NS	4213-331	Wiring Diagram				X										X						
NS	4213-628	Wiring Diagram						X									X					
NS	4213-728	Wiring Diagram							X										X			
NS	3000-1613BX	Blower Power Plug	X	X	X	X	X	X	X	X	X	X	X	X	X	X	X	X	X	X	X	X
NS	3000-1645BX	Blower Power Plug						X									X					
NS	3000-1614BX	Blower Speed Plug	X	X	X	X	X	X	X	X	X	X	X	X	X	X	X	X	X	X	X	X
NS	3000-1222BX	Compressor Plug/Harness	X							X			X							X		
NS	3000-1230BX	Compressor Plug/Harness		X	X	X	X	X	X		X	X		X	X	X	X	X	X		X	X
NS	3003-164BX	Control Panel Wire Harness	X										X									
NS	3003-165BX	Control Panel Wire Harness		X	X	X	X							X	X	X						
NS	3003-166BX	Control Panel Wire Harness						X									X					
NS	3003-167BX	Control Panel Wire Harness							X													
NS	3003-168BX	Control Panel Wire Harness								X										X		
NS	3003-169BX	Control Panel Wire Harness									X	X									X	X
NS	3000-1693BX	Low Voltage Terminal Block Wire Harness	X	X	X	X	X	X	X	X	X	X	X	X	X	X	X	X	X	X	X	X

BLOWER ASSEMBLY



SEXP-929

Dwg No.	Part Number	Description	900-366-0155BX	900-367-0156BX	900-368-001BX	900-368-002BX	900-368-003BX	900-368-0157BX	900-368-0159BX	900-368-0161BX	900-369-0158BX	900-369-0160BX	900-369-0162BX
1	5152-011BX	10 Inch Wheel (CW)	X	X	X	X	X	X	X	X	X	X	X
2	5152-012BX	10 Inch Wheel (CW)	X	X	X	X	X	X	X	X	X	X	X
3	8106-068BX	Programmed Blower Motor & Control (230/208V)	X										
3	8106-069BX	Programmed Blower Motor & Control (460V)		X									
3	8107-028BX	Blower Motor & Control (230/208V)						X	X	X			
3	8107-028-0157BX	Programmed Blower Motor & Control (230/208V)			X								
3	8107-028-0159BX	Programmed Blower Motor & Control (230/208V)				X							
3	8107-028-0161BX	Programmed Blower Motor & Control (230/208V)					X						
3	8107-029BX	Programmed Blower Motor & Control (460V)									X	X	X
3	C8107-028-0157	Programmed Control Only (230/208V)			O								
3	C8107-028-0159	Programmed Control Only (230/208V)				O							
3	C8107-028-0161	Programmed Control Only (230/208V)					O						
4	8200-040BX	Motor Mount	X	X	X	X	X	X	X	X	X	X	X
5	5451-011	Grommets	6	6	6	6	6	6	6	6	6	6	6
6	112-775BX	Motor Control Bracket	X	X	X	X	X	X	X	X	X	X	X
7	105-880BX	Side Angle	4	4	4	4	4	4	4	4	4	4	4
8	105-881BX	Back Brace	X	X	X	X	X	X	X	X	X	X	X
9	103-541BX	Front Mounting Offset	X	X	X	X	X	X	X	X	X	X	X
10	144-166BX	Diffuser	2	2	2	2	2	2	2	2	2	2	2
11	151-101BX	Blower Housing	2	2	2	2	2	2	2	2	2	2	2

X – Standard Component
O – Optional Component