
REPLACEMENT PARTS MANUAL

R-454B Step Capacity 2 Stage Wall Mount Air Conditioner

Models:

W3SAF-A	W4SAF-A	W5SAF-A
W3SAF-B	W4SAF-B	W5SAF-B
W3SAF-C	W4SAF-C	W5SAF-C
W3SAFDA	W4SAFDA	W5SAFDA
W3SAFDB	W4SAFDB	W5SAFDB
W3SAFDC	W4SAFDC	W5SAFDC

Contents

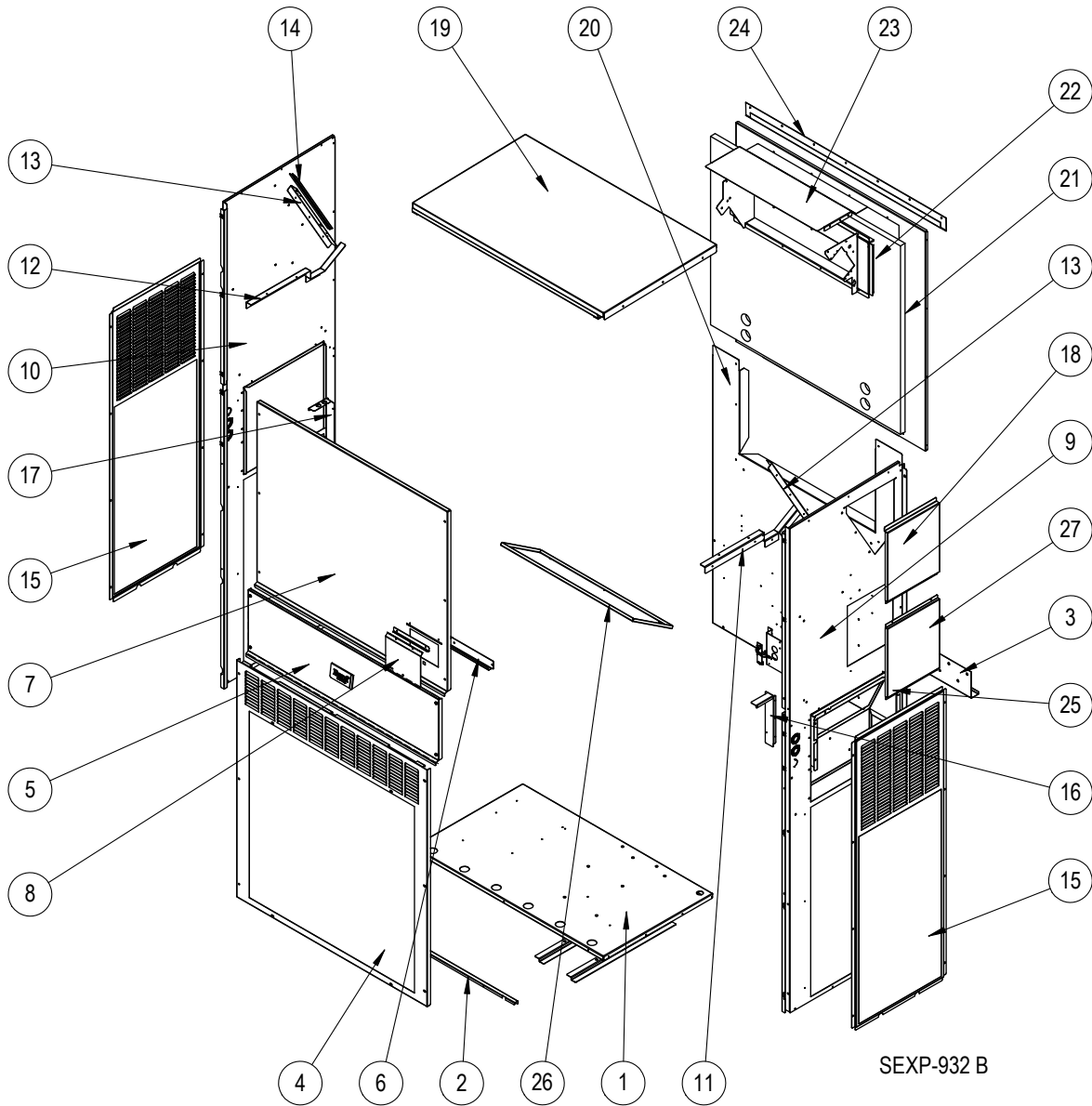
Description	Page	Description	Page
External Parts – Standard & Dehum.		Control Panel – Standard & Dehum.	
♦ Exploded View	2	♦ Layout View	14
♦ Usage List	3	♦ Usage List	15
♦ Usage List	4	♦ Usage List	16
Internal Parts – Standard & Dehum.		Blower Assembly	
♦ Exploded View	6	♦ Exploded View	17
♦ Usage List	7	♦ Usage List	17
♦ Usage List	8		
Functional Components – Standard & Dehum.		General Notes	
♦ Exploded View	10	➤ Revised and/or additional pages may be issued from time to time.	
♦ Usage List	11	➤ A complete and current manual consists of pages shown in the following contents section.	
♦ Usage List	12		
EEV Controller Assembly		Important	
♦ Exploded View	13	➤ Contact the installing and/or local Bard distributor for all parts requirements. Be sure to have the complete model and serial number available from the unit rating plates.	
♦ Usage List	13		



Bard Manufacturing Company, Inc.
Bryan, Ohio 43506
www.bardhvac.com

Manual: 2110-1487
Supersedes: **NEW**
Date: 11-20-24

EXTERNAL PARTS – STANDARD & DEHUMIDIFICATION



This drawing to be used for reference for pages 3 and 4

EXTERNAL PARTS – STANDARD & DEHUMIDIFICATION

Dwg No.	Part Number	Description	W3SAF-A, B, C	W3SAFDA, B, C	W4SAF-A, B, C	W4SAFDA, B, C
1	127-574BX	Unit Base	X	X	X	X
1	127-584BX ③	Unit Base	0	0	0	0
2	113-762BX	Front Base Bracket	X	X	X	X
2	113-797BX ③	Front Base Bracket	0	0	0	0
3	113-140BX	Bottom Mounting Bracket	X	X	X	X
4	119-125-*BX ①	Front Grille	X	X	X	X
4	119-148BX ②	Front Grille	0	0	0	0
4	119-135BX ③	Front Grille	0	0	0	0
5	533-301-*BX ①	Control Panel Cover (Outer)	X	X	X	X
5	533-309BX ②	Control Panel Cover (Outer)	0	0	0	0
5	533-310BX ③	Control Panel Cover (Outer)	0	0	0	0
6	165-608-*BX ①	Rain Channel	X	X	X	X
6	165-609BX ②	Rain Channel	0	0	0	0
6	165-610BX ③	Rain Channel	0	0	0	0
7	515-323-*BX ①	Upper Front	X	X	X	X
7	515-328BX ②	Upper Front	0	0	0	0
7	515-330BX ③	Upper Front	0	0	0	0
8	153-717-*BX ①	Disconnect Access Door	X	X	X	X
8	153-723BX ②	Disconnect Access Door	0	0	0	0
8	153-724BX ③	Disconnect Access Door	0	0	0	0
9	501-1127-*BX ①	Right Side	X	X	X	X
9	501-1128BX ②	Right Side	0	0	0	0
9	501-1129BX ③	Right Side	0	0	0	0
10	501-1054-*BX ①	Left Side	X	X	X	X
10	501-1073BX ②	Left Side	0	0	0	0
10	501-1077BX ③	Left Side	0	0	0	0
11	105X1454BX	Right Support Angle	X	X	X	X
12	105Y1454BX	Left Support Angle	X	X	X	X
13	105-1457BX	Coil Support	2	2	2	2
14	147-055BX	Coil Support Offset	X	X	X	X
15	119-126-*BX ①	Side Grille	2	2	2	2
15	119-142BX ②	Side Grille	2	2	2	2
15	119-136BX ③	Side Grille	2	2	2	2
16	105-1450BX	Right Control Panel Angle	X	X	X	X
17	105-1451BX	Left Control Panel Angle	X	X	X	X
18	543-221-*BX ①	Heater Access Cover	X	X	X	X
18	543-228BX ②	Heater Access Cover	0	0	0	0
18	543-229BX ③	Heater Access Cover	0	0	0	0
19	507-382-*BX ①	Top	X	X	X	X
19	507-391BX ②	Top	0	0	0	0
19	507-392BX ③	Top	0	0	0	0
20	109-412BX	Lower Back	X	X	X	X
20	109-418BX ②	Lower Back	0	0	0	0
20	109-422BX ③	Lower Back	0	0	0	0
21	509-411BX	Upper Back	X	X	X	X
21	509-417BX ②	Upper Back	0	0	0	0
21	509-421BX ③	Upper Back	0	0	0	0
22	111-299BX	Outlet Air Frame Assembly	X	X	X	X
23	535-129BX	Heat Shield	X	X	X	X
24	113-150-*BX ①	Top Rain Flashing	X	X	X	X
24	113-150-4BX ②	Top Rain Flashing	0	0	0	0
24	113-359BX ③	Top Rain Flashing	0	0	0	0
25	539-406BX	Fresh Air Damper Assembly	X	X	X	X
25	543-222BX	Intake Blank Off Plate	0	0	0	0
26	543-220BX	Exhaust Blank Off Plate	X	X	X	X
27	543-248-*BX ①	Access Cover	X	X	X	X
27	543-250BX ②	Access Cover	0	0	0	0
27	543-251BX ③	Access Cover	0	0	0	0
NS	5252-033BX	Bard Nameplate	X	X	X	X

① Exterior cabinet parts are manufactured with various paint color options. To ensure the proper paint color is received, include the complete model and serial number of the unit for which cabinet parts are being ordered.

X – Standard Component
0 – Optional Component

② Exterior cabinet parts are manufactured from aluminum Code "A"
#24 - Top rain flashing not available in aluminum; order 113-150-4 (Buckeye Gray).
③ Exterior cabinet parts are manufactured from stainless steel Code "S"

EXTERNAL PARTS – STANDARD & DEHUMIDIFICATION

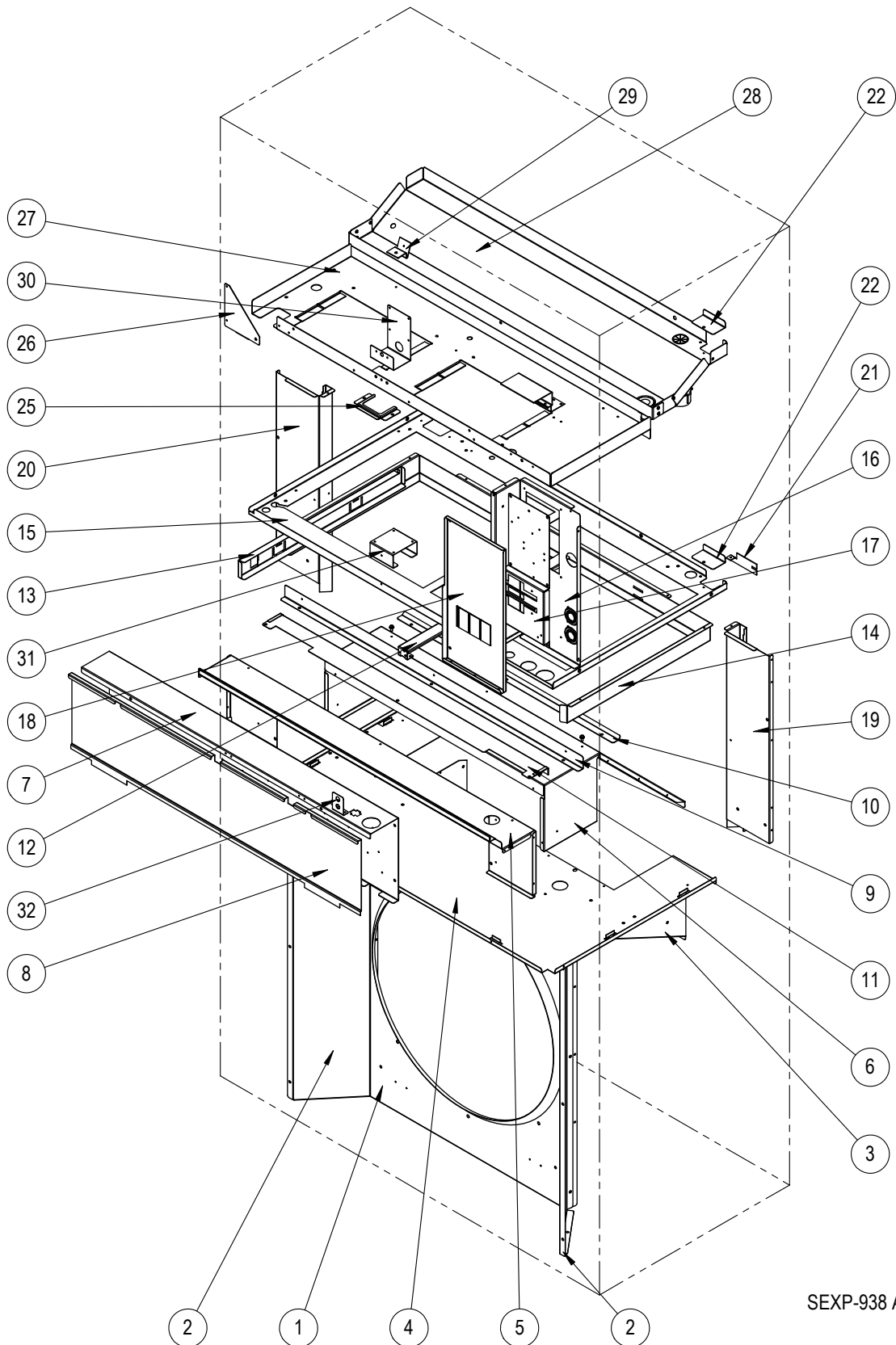
Dwg No.	Part Number	Description	W5SAF-A, B, C	W5SAFDA, B, C
1	127-574BX	Unit Base	X	X
1	127-584BX ③	Unit Base	0	0
2	113-762BX	Front Base Bracket	X	X
2	113-797BX ③	Front Base Bracket	0	0
3	113-140BX	Bottom Mounting Bracket	X	X
4	119-127-*BX ①	Front Grille	X	X
4	119-149BX ②	Front Grille	0	0
4	119-137BX ③	Front Grille	0	0
5	533-301-*BX ①	Control Panel Cover (Outer)	X	X
5	533-309BX ②	Control Panel Cover (Outer)	0	0
5	533-310BX ③	Control Panel Cover (Outer)	0	0
6	165-608-*BX ①	Rain Channel	X	X
6	165-609BX ②	Rain Channel	0	0
6	165-610BX ③	Rain Channel	0	0
7	515-324-*BX ①	Upper Front	X	X
7	515-329BX ②	Upper Front	0	0
7	515-331BX ③	Upper Front	0	0
8	153-717-*BX ①	Disconnect Access Door	X	X
8	153-723BX ②	Disconnect Access Door	0	0
8	153-724BX ③	Disconnect Access Door	0	0
9	501-1130-*BX ①	Right Side	X	X
9	501-1131BX ②	Right Side	0	0
9	501-1132BX ③	Right Side	0	0
10	501-1056-*BX ①	Left Side	X	X
10	501-1075BX ②	Left Side	0	0
10	501-1079BX ③	Left Side	0	0
11	105X1454BX	Right Support Angle	X	X
12	105Y1454BX	Left Support Angle	X	X
13	105-1455BX	Coil Support	2	2
14	147-054BX	Coil Support Offset	X	X
15	119-128-*BX ①	Side Grille	2	2
15	119-143BX ②	Side Grille	2	2
15	119-138BX ③	Side Grille	2	2
16	105-1450BX	Right Control Panel Angle	X	X
17	105-1451BX	Left Control Panel Angle	X	X
18	543-221-*BX ①	Heater Access Cover	X	X
18	543-228BX ②	Heater Access Cover	0	0
18	543-229BX ③	Heater Access Cover	0	0
19	507-382-*BX ①	Top	X	X
19	507-391BX ②	Top	0	0
19	507-392BX ③	Top	0	0
20	109-414BX	Lower Back	X	X
20	109-420BX ②	Lower Back	0	0
20	109-424BX ③	Lower Back	0	0
21	509-413BX	Upper Back	X	X
21	509-419BX ②	Upper Back	0	0
21	509-423BX ③	Upper Back	0	0
22	111-299BX	Outlet Air Frame Assembly	X	X
23	535-129BX	Heat Shield	X	X
24	113-150-*BX ①	Top Rain Flashing	X	X
24	113-150-4BX ②	Top Rain Flashing	0	0
24	113-359BX ③	Top Rain Flashing	0	0
25	539-406BX	Fresh Air Damper Assembly	X	X
25	543-222BX	Intake Blank Off Plate	0	0
26	543-220BX	Exhaust Blank Off Plate	X	X
27	543-248-*BX ①	Access Cover	X	X
27	543-250BX ②	Access Cover	0	0
27	543-251BX ③	Access Cover	0	0
NS	5252-033BX	Bard Nameplate	X	X

① Exterior cabinet parts are manufactured with various paint color options. To ensure the proper paint color is received, include the complete model and serial number of the unit for which cabinet parts are being ordered.

X – Standard Component
0 – Optional Component

This page intentionally left blank

INTERNAL PARTS - STANDARD & DEHUMIDIFICATION



SEXP-938 A

INTERNAL PARTS – STANDARD & DEHUMIDIFICATION

Dwg No.	Part Number	Description	W3SAF-A, B	W3SAF-C	W3SAFDA, B	W3SAFDC	W4SAF-A, B	W4SAF-C	W4SAFDA, B	W4SAFDC
1	125-089BX	Fan Shroud	X	X	X	X	X	X	X	X
1	125-093BX ①	Fan Shroud	0	0	0	0	0	0	0	0
2	125-090BX	Fan Shroud Side Access Cover	2	2	2	2	2	2	2	2
2	125-094BX ①	Fan Shroud Side Access Cover	2	2	2	2	2	2	2	2
3	121-586BX	Condenser Partition Insert	X	X	X	X	X	X	X	X
3	121-600BX ①	Condenser Partition Insert	0	0	0	0	0	0	0	0
4	121-585BX	Condenser Partition	X	X	X	X	X	X	X	X
4	121-599BX ①	Condenser Partition	0	0	0	0	0	0	0	0
5	521-630BX	Front Exhaust Partition	X	X	X	X	X	X	X	X
6	521-587BX	Exhaust Partition	X	X	X	X	X	X	X	X
7	Control Panel Assy.	See Control Panel Assy. Drawing & Parts List	X	X	X	X	X	X	X	X
8	133-330BX	Control Panel Cover (Inner)	X	X	X	X	X	X	X	X
9	105-1453BX	Front Vent Guide Rail	X	X	X	X	X	X	X	X
10	105-1452BX	Vent Guide Rail	X	X	X	X	X	X	X	X
11	135-409BX	Field Wire Shield	X	X	X	X	X	X	X	X
12	131-168BX	Filter Support Bracket	2	2	2	2	2	2	2	2
13	131-170BX	Filter Slide	X	X	X	X	X	X	X	X
14	131-169BX	Filter Rack Frame	X	X	X	X	X	X	X	X
15	121-583BX	Filter Partition	X	X	X	X	X	X	X	X
16	117-412BX	Upper Control Panel	X	X	X	X	X	X	X	X
17	127-575BX	Circuit Breaker Base	X		X		X		X	
17	127-585BX	Circuit Breaker Base - 460V		X		X		X		X
18	133-303BX	Upper Control Panel Cover	X		X		X		X	
18	133-304BX	Upper Control Panel Cover - 460V		X		X		X		X
19	135X393BX	Right Copper Chase	X	X	X	X	X	X	X	X
19	135X397BX ①	Right Copper Chase	0	0	0	0	0	0	0	0
20	135Y393BX	Left Copper Chase	X	X	X	X	X	X	X	X
20	135Y397BX ①	Left Copper Chase	0	0	0	0	0	0	0	0
21	113-796BX	Copper Retainer	2	2	2	2	2	2	2	2
22	137-920BX	Copper Fill Plate	2	2	2	2	2	2	2	2
25	113-765BX	Grommet Retainer	X	X	X	X	X	X	X	X
26	141-492BX	Blower Partition Support	X	X	X	X	X	X	X	X
27	121-582BX	Blower Partition	X	X	X	X	X	X	X	X
28	523-161BX	Drain Pan	X	X	X	X	X	X	X	X
28	523-162BX ①②	Drain Pan	0	0	0	0	0	0	0	0
29	113-816BX	TXV mounting Bracket	X	X			X	X		
29	113-768BX	EEV mounting Bracket			X	X			X	X
30	113-787BX	Airflow Switch Bracket	0	0	0	0	0	0	0	0
31	113-788BX	Filter Switch Bracket	0	0	0	0	0	0	0	0
32	113-789BX	Filter Switch Light Bracket	0	0	0	0	0	0	0	0

① Exterior cabinet parts are manufactured from stainless steel Code "S"

② For aluminum units, order 523-162 stainless steel drain pan.

X – Standard Component

0 – Optional Component

INTERNAL PARTS – STANDARD & DEHUMIDIFICATION

Dwg No.	Part Number	Description	W5SAF-A, B	W5SAF-C	W5SAFDA, B	W5SAFDC
1	125-091BX	Fan Shroud	X	X	X	X
1	125-095BX ①	Fan Shroud	0	0	0	0
2	125-092BX	Fan Shroud Side Access Cover	2	2	2	2
2	125-096BX ①	Fan Shroud Side Access Cover	2	2	2	2
3	121-586BX	Condenser Partition Insert	X	X	X	X
3	121-600BX ①	Condenser Partition Insert	0	0	0	0
4	121-585BX	Condenser Partition	X	X	X	X
4	121-599BX ①	Condenser Partition	0	0	0	0
5	521-630BX	Front Exhaust Partition	X	X	X	X
6	521-587BX	Exhaust Partition	X	X	X	X
7	Control Panel Assy.	See Control Panel Assy. Drawing & Parts List	X	X	X	X
8	133-330BX	Control Panel Cover (Inner)	X	X	X	X
9	105-1453BX	Front Vent Guide Rail	X	X	X	X
10	105-1452BX	Vent Guide Rail	X	X	X	X
11	135-409BX	Field Wire Shield	X	X	X	X
12	131-168BX	Filter Support Bracket	2	2	2	2
13	131-170BX	Filter Slide	X	X	X	X
14	131-169BX	Filter Rack Frame	X	X	X	X
15	121-583BX	Filter Partition	X	X	X	X
16	117-412BX	Upper Control Panel	X	X	X	X
17	127-575BX	Circuit Breaker Base	X		X	
17	127-585BX	Circuit Breaker Base - 460V		X		X
18	133-303BX	Upper Control Panel Cover	X		X	
18	133-304BX	Upper Control Panel Cover - 460V		X		X
19	135X393BX	Right Copper Chase	X	X	X	X
19	135X397BX ①	Right Copper Chase	0	0	0	0
20	135Y393BX	Left Copper Chase	X	X	X	X
20	135Y397BX ①	Left Copper Chase	0	0	0	0
21	113-796BX	Copper Retainer	2	2	2	2
22	137-920BX	Copper Fill Plate	2	2	2	2
25	113-765BX	Grommet Retainer	X	X	X	X
26	141-492BX	Blower Partition Support	X	X	X	X
27	121-582BX	Blower Partition	X	X	X	X
28	523-161BX	Drain Pan	X	X	X	X
28	523-162BX ①②	Drain Pan	0	0	0	0
29	113-768BX	EEV mounting Bracket			X	X
29	113-816BX	TXV mounting Bracket	X	X		
30	113-787BX	Airflow Switch Bracket	0	0	0	0
31	113-788BX	Filter Switch Bracket	0	0	0	0
32	113-789BX	Filter Switch Light Bracket	0	0	0	0

① Exterior cabinet parts are manufactured from stainless steel Code "S"

② For aluminum units, order 523-162 stainless steel drain pan.

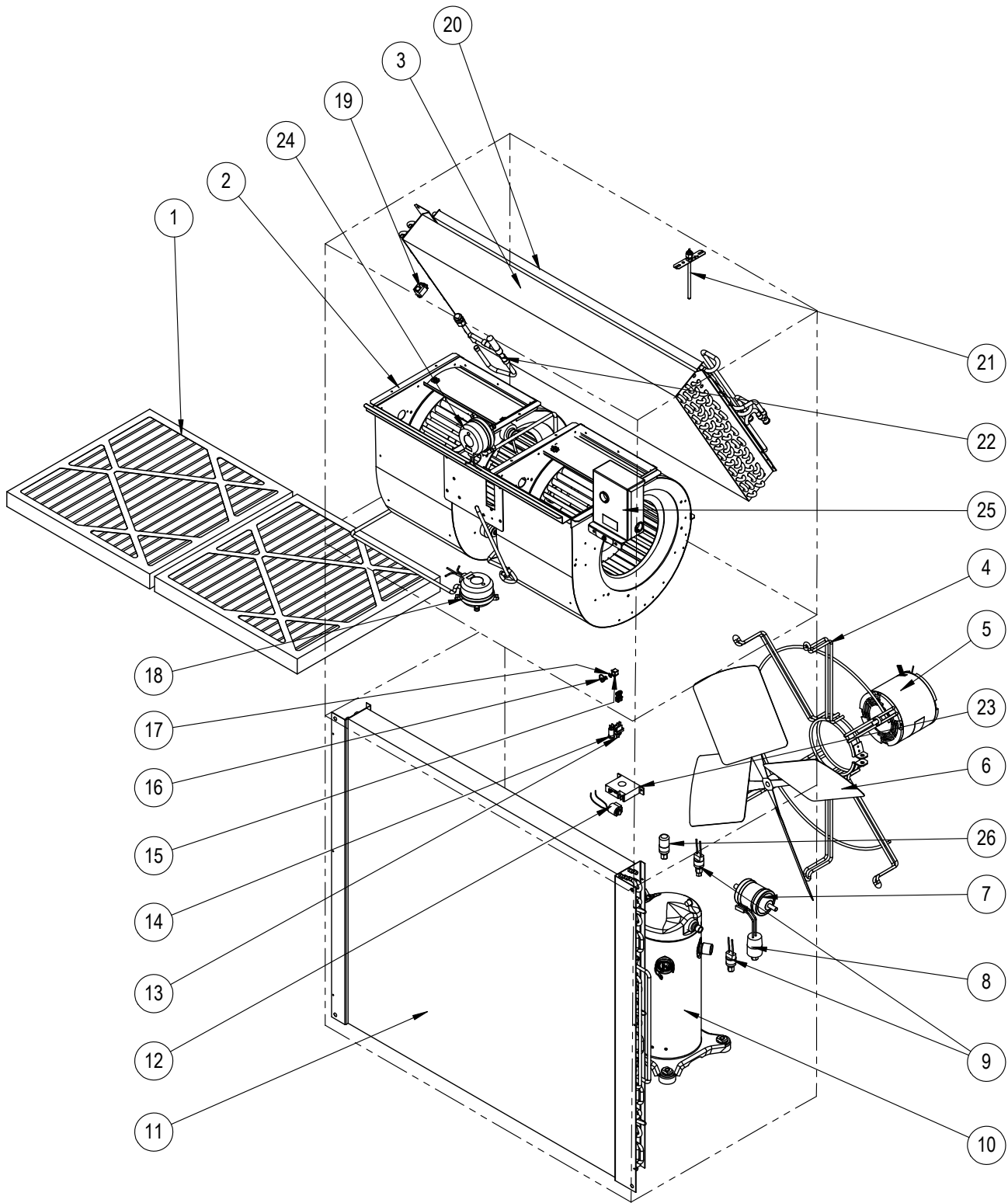
X – Standard Component

0 – Optional Component

Refer to drawing on page 6

This page intentionally left blank

FUNCTIONAL COMPONENTS – STANDARD & DEHUMIDIFICATION



SEXP-931

This drawing to be used for reference for pages 11 and 12

FUNCTIONAL COMPONENTS – STANDARD & DEHUMIDIFICATION

Dwg No.	Part Number	Description	W3SAF-A	W3SAF-B	W3SAF-C	W3SAFDA	W3SAFDB	W3SAFDC	W4SAF-A	W4SAF-B	W4SAF-C	W4SAFDA	W4SAFDB	W4SAFDC
1	7004-012	Air Filter 1" Throw-Away (20 x 20 x 1)	2	2	2	2	2	2	2	2	2	2	2	2
1	7003-085 ①	Air Filter 1" Washable (20 x 20 x 1)	2	2	2	2	2	2	2	2	2	2	2	2
1	7004-052 ①	Air Filter 2" Merv 8 (20 x 20 x 2)	2	2	2	2	2	2	2	2	2	2	2	2
1	7004-060 ①	Air Filter 2" Merv 11 (20 x 20 x 2)	2	2	2	2	2	2	2	2	2	2	2	2
1	7004-063 ①	Air Filter 2" Merv 13 (20 x 20 x 2)	2	2	2	2	2	2	2	2	2	2	2	2
2	900-387-0290BX	Blower Assembly	X	X		X	X							
2	900-387-0289BX	Blower Assembly - 460V			X			X						
2	900-387-0288BX	Blower Assembly							X	X		X	X	
2	900-387-0287BX	Blower Assembly - 460V									X			X
3	917-0368BX	Evaporator Coil w/Distributor Assy.	X	X	X	X	X	X						
3	917-0369BX	Evaporator Coil - Coated w/Distributor Assy.	0	0	0	0	0	0						
3	917-0606BX	Evaporator Coil w/Distributor Assy.							X	X	X	X	X	X
3	917-0608BX	Evaporator Coil - Coated w/Distributor Assy.							0	0	0	0	0	0
4	8200-004BX	Fan Motor Mount	X	X	X	X	X	X	X	X	X	X	X	X
4	8200-051BX ②	Fan Motor Mount - Stainless Steel	0	0	0	0	0	0	0	0	0	0	0	0
5	8105-068BX	Condenser Motor	X	X		X	X		X	X		X	X	
5	8105-071BX	Condenser Motor - 460V			X			X			X			X
6	5151-060BX	Fan Blade	X	X	X	X	X	X	X	X	X	X	X	X
6	5151C060BX ②	Fan Blade - Coated	0	0	0	0	0	0	0	0	0	0	0	0
7	5201-022BX	Filter Drier	X	X	X	X	X	X	X	X	X	X	X	X
8	CMA-39	Low Ambient Control (LAC)	0	0	0	0	0	0	0	0	0	0	0	0
9	8406-166BX	High Pressure Switch	X	X	X	X	X	X	X	X	X	X	X	X
9	8406-167BX	Low Pressure Switch	X	X	X	X	X	X	X	X	X	X	X	X
10	8000-518BX	Compressor	X			X								
10	8000-519BX	Compressor		X			X							
10	8000-520BX	Compressor			X			X						
10	8000-524BX	Compressor							X			X		
10	8000-525BX	Compressor								X			X	
10	8000-526BX	Compressor									X			X
11	5051-222BX	Condenser Coil	X	X	X	X	X	X	X	X	X	X	X	X
11	5054-222BX	Condenser Coil - Coated	0	0	0	0	0	0	0	0	0	0	0	0
12	8408-055BX	Outdoor Temperature Sensor	0	0	0	0	0	0	0	0	0	0	0	0
13	3000-1638BX	Dirty Filter Reset Switch	0	0	0	0	0	0	0	0	0	0	0	0
14	8611-094BX	Red Indicator Light - 24VAC	0	0	0	0	0	0	0	0	0	0	0	0
15	1171-023	1/4 Turn Receptacle	X	X	X	X	X	X	X	X	X	X	X	X
16	1171-022	1/4 Turn Fastener	X	X	X	X	X	X	X	X	X	X	X	X
17	1171-024	1/4 Turn Retainer	X	X	X	X	X	X	X	X	X	X	X	X
18	8301-057BX	Filter Pressure Switch	0	0	0	0	0	0	0	0	0	0	0	0
19	CMC-29	Freeze Protection Thermostat	0	0	0	0	0	0	0	0	0	0	0	0
20	5051-221BX	Reheat Coil				X	X	X				X	X	X
20	5054-221BX	Reheat Coil - Coated				0	0	0				0	0	0
21	910-1224BX	Supply Air Temperature Sensor	0	0	0	0	0	0	0	0	0	0	0	0
22	905-0819BX	Expansion Valve Assembly	X	X	X									
22	905-0820BX	Expansion Valve Assembly							X	X	X			
22	5651-245BX	Electronic Expansion Valve (Valve Only)				X	X	X				X	X	X
22	905-0737BX	Electronic Expansion Valve (EEV) Assembly				X	X	X				X	X	X
23	8301-013BX	Current Sensor	0	0	0	0	0	0	0	0	0	0	0	0
24	8301-057BX	Airflow Pressure Switch	0	0	0	0	0	0	0	0	0	0	0	0
25	910-2050-005BX	EEV Controller (see page 13 for breakdown)				X	X	X				X	X	X
26	8406-158BX	Low Pressure Transducer				X	X	X				X	X	X
26	3000-1603BX	Transducer Wire Assembly - Transducer to QC				X	X	X				X	X	X
NS	CMA-39	LAC Kit = Item #'s 8,12,19	0	0	0	0	0	0	0	0	0	0	0	0
NS	CMC-33	Dirty Filter Switch Kit = Item #'s 13,14,18	0	0	0	0	0	0	0	0	0	0	0	0
NS	CMA-44	DDC Kit = Item #'s 8,12,13,14,18,19,21,23,24	0	0	0	0	0	0	0	0	0	0	0	0
NS	5650-051BX	Dehumidification Valve				X	X	X				X	X	X
NS	5650-042BX	Rev. Valve Solenoid, Red Casing (Ranco)				X	X	X				X	X	X
NS	5650-046BX	Rev. Valve Solenoid, Black Casing (San Hua)				X	X	X				X	X	X
NS	5651-219	Check Valve				2	2	2				2	2	2
NS	5451-024	Tubing Isolation Grommet	2	2	2	4	4	4	2	2	2	4	4	4
NS	6031-009	Coremax Valve Core	2	2	2	2	2	2	2	2	2	2	2	2
NS	1171-028	Control Panel Door Clip	4	4	4	4	4	4	4	4	4	4	4	4
NS	1171-057	Control Panel Door Screw	4	4	4	4	4	4	4	4	4	4	4	4
NS	1171-027	Control Panel Door Screw Retainer	4	4	4	4	4	4	4	4	4	4	4	4
NS	5650-054	Molded Plug for Dehum Valve				X	X	X				X	X	X
NS	8301-110BX	RDS Sensor	X	X	X	X	X	X	X	X	X	X	X	X
NS	8401-036BX	RDS Relay	X	X	X	X	X	X	X	X	X	X	X	X
NS	8620-343	UV-C Field Install Kit	0	0	0	0	0	0	0	0	0	0	0	0
NS	8620-370	AIR4 NBPI Field Install Kit	0	0	0	0	0	0	0	0	0	0	0	0

NS – Not Shown

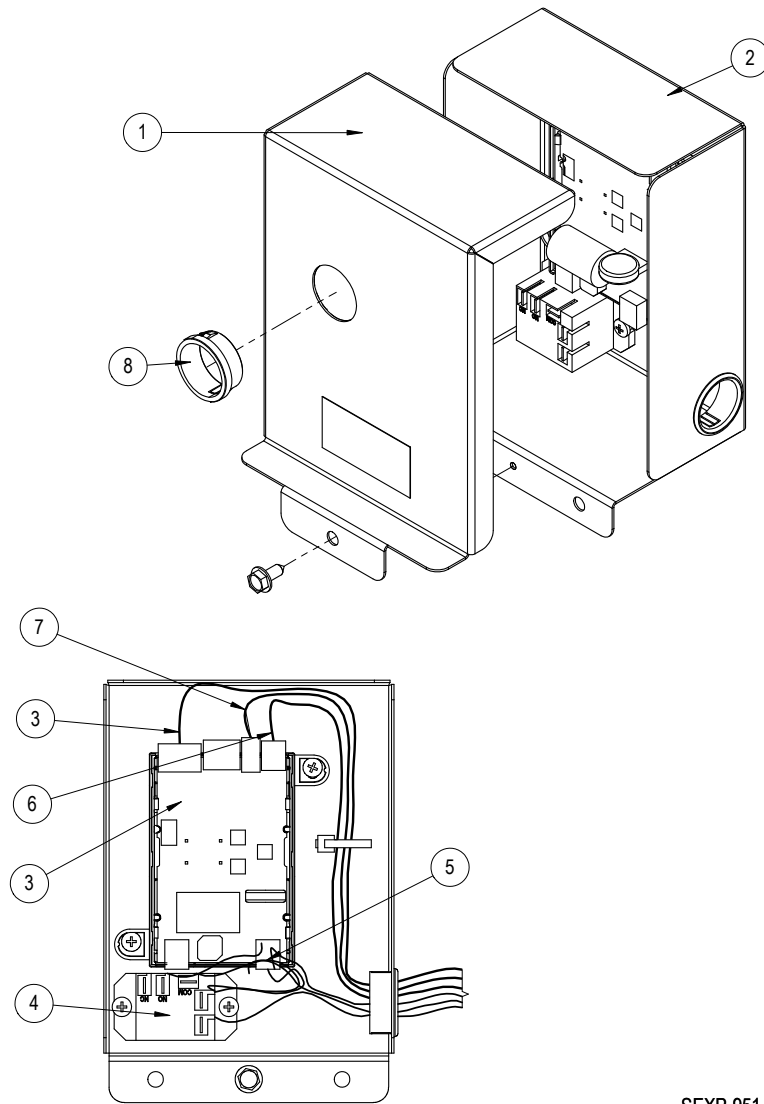
① – Optional on these models
 ② – Used with stainless steel cabinet option

X – Standard Component
 0 – Optional Component

FUNCTIONAL COMPONENTS – STANDARD & DEHUMIDIFICATION

Dwg No.	Part Number	Description	W5SAF-A	W5SAF-B	W5SAF-C	W5SAFDA	W5SAFDB	W5SAFDC
1	7004-012	Air Filter 1" Throw-Away (20 x 20 x 1)	2	2	2	2	2	2
1	7003-085 ①	Air Filter 1" Washable (20 x 20 x 1)	2	2	2	2	2	2
1	7004-052 ①	Air Filter 2" Merv 8 (20 x 20 x 2)	2	2	2	2	2	2
1	7004-060 ①	Air Filter 2" Merv 11 (20 x 20 x 2)	2	2	2	2	2	2
1	7004-063 ①	Air Filter 2" Merv 13 (20 x 20 x 2)	2	2	2	2	2	2
2	900-369-0286BX	Blower Assembly	X	X		X	X	
2	900-369-0285BX	Blower Assembly - 460V			X			X
3	917-0376BX	Evaporator Coil	X	X	X	X	X	X
3	917-0377BX	Evaporator Coil	0	0	0	0	0	0
4	8200-004BX	Fan Motor Mount	X	X	X	X	X	X
4	8200-051BX ②	Fan Motor Mount - Stainless Steel	0	0	0	0	0	0
5	8105-068BX	Condenser Motor	X	X		X	X	
5	8105-071BX	Condenser Motor - 460V			X			X
6	5151-060BX	Fan Blade	X	X	X	X	X	X
6	5151C060BX ②	Fan Blade - Coated	0	0	0	0	0	0
7	5201-022BX	Filter Drier	X	X	X	X	X	X
8	CMA-39	Low Ambient Control (LAC)	0	0	0	0	0	0
9	8406-166BX	High Pressure Switch	X	X	X	X	X	X
9	8406-167BX	Low Pressure Switch	X	X	X	X	X	X
10	8000-527BX	Compressor	X			X		
10	8000-528BX	Compressor		X			X	
10	8000-529BX	Compressor			X			X
11	5051-223BX	Condenser Coil	X	X	X	X	X	X
11	5054-223BX	Condenser Coil - Coated	0	0	0	0	0	0
12	8408-055BX	Outdoor Temperature Sensor	0	0	0	0	0	0
13	3000-1638BX	Dirty Filter Reset Switch	0	0	0	0	0	0
14	8611-094BX	Red Indicator Light - 24VAC	0	0	0	0	0	0
15	1171-023	1/4 Turn Receptacle	X	X	X	X	X	X
16	1171-022	1/4 Turn Fastener	X	X	X	X	X	X
17	1171-024	1/4 Turn Retainer	X	X	X	X	X	X
18	8301-057BX	Filter Pressure Switch	0	0	0	0	0	0
19	CMC-29	Freeze Protection Thermostat	0	0	0	0	0	0
20	5051-221BX	Reheat Coil				X	X	X
20	5054-221BX	Reheat Coil - Coated				0	0	0
21	910-1224BX	Supply Air Temperature Sensor	0	0	0	0	0	0
22	905-0821BX	Expansion Valve Assembly	X	X	X			
22	905-0745BX	Electronic Expansion Valve (EEV) Assembly				X	X	X
23	8301-013BX	Current Sensor	0	0	0	0	0	0
24	8301-057BX	Airflow Pressure Switch	0	0	0	0	0	0
25	910-2050-005BX	EEV Controller (see page 13 for breakdown)				X	X	X
26	8406-158BX	Low Pressure Transducer				X	X	X
26	3000-1603BX	Transducer Wire Assembly - Transducer to QC				X	X	X
NS	CMA-39	LAC Kit = Item #'s 8,12,19	0	0	0	0	0	0
NS	CMC-33	Dirty Filter Switch Kit = Item #'s 13,14,18	0	0	0	0	0	0
NS	CMA-44	DDC Kit = Item #'s 8,12,13,14,18,19,21,23,24	0	0	0	0	0	0
NS	5451-024	Tubing Isolation Grommet	2	2	2	4	4	4
NS	6031-009	Coremax Valve Core	2	2	2	2	2	2
NS	1171-028	Control Panel Door Clip	4	4	4	4	4	4
NS	1171-057	Control Panel Door Screw	4	4	4	4	4	4
NS	1171-027	Control Panel Door Screw Retainer	4	4	4	4	4	4
NS	5650-051BX	Dehumidification Valve				X	X	X
NS	5650-042BX	Rev. Valve Solenoid, Red Casing (Ranco)				X	X	X
NS	5650-046BX	Rev. Valve Solenoid, Black Casing (San Hua)				X	X	X
NS	5651-219	Check Valve				2	2	2
NS	8301-110BX	RDS Sensor	X	X	X	X	X	X
NS	8401-036BX	RDS Relay	X	X	X	X	X	X
NS	8620-343	UV-C Field Install Kit	0	0	0	0	0	0
NS	8620-370	AIR4 NBPI Field Install Kit	0	0	0	0	0	0

EEV CONTROLLER ASSEMBLY

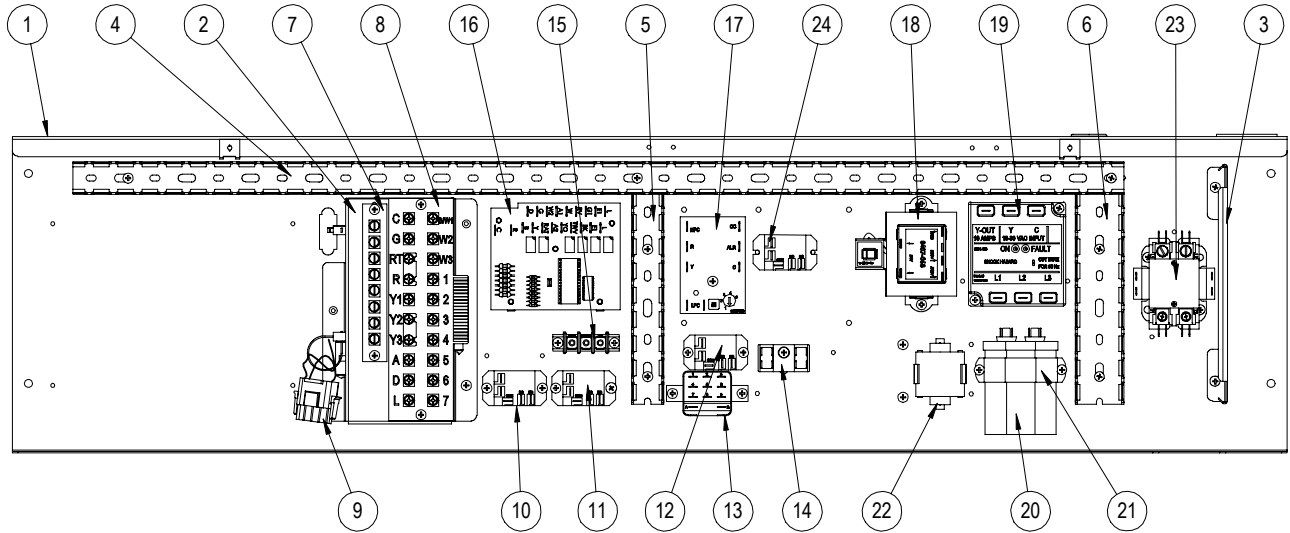


SEXP-951

910-2050-005

Dwg No.	Part Number	Description	
1	143-219BX	EEV Control Box Cover	X
2	127-572BX	EEV Control Box	X
3	8301-079-0005BX	EEV Control Module & Stator Cable	X
3	5651-246BX	EEV Stator Cable Only	X
4	8201-130BX	Control Relay	X
5	3000-1602BX	Main Wire Assembly	X
6	3000-1611BX	Transducer Wire Assembly – EEV Board to QC	X
7	8408-056BX	EEV Thermistor	X
8	8611-075	Clear Snap Plug	X

CONTROL PANEL – STANDARD & DEHUMIDIFICATION



SEXP-1020

This drawing to be used for reference for pages 15 and 16

CONTROL PANEL – STANDARD & DEHUMIDIFICATION

Dwg No.	Part Number	Description	W3SAF-A	W3SAF-B	W3SAF-C	W3SAFDA	W3SAFDB	W3SAFDC	W4SAF-A	W4SAF-B	W4SAF-C	W4SAFDA	W4SAFDB	W4SAFDC
1	117-411BX	Control Panel	X	X	X	X	X	X	X	X	X	X	X	X
2	910-2108BX	Complete Low Voltage Box Assembly (Sheet metal, Terminal Strip, & Wire Harness)	X	X	X	X	X	X	X	X	X	X	X	X
3	135-394BX	Wire Shield	X	X	X	X	X	X	X	X	X	X	X	X
4	8611-140-3208BX	Cable Duct - 32.5"	X	X	X	X	X	X	X	X	X	X	X	X
6	8611-244-0608BX	Cable Duct - 6.5" x 1.5" wide	2	2	2	2	2	2	2	2	2	2	2	2
7	8607-021BX	Low Voltage Terminal Strip - 8 term.	0	0	0	0	0	0	0	0	0	0	0	0
8	8607-071BX	Low Voltage Terminal Strip - 20 term.	X	X	X	X	X	X	X	X	X	X	X	X
9	3000-1524BX	Vent Jumper Plug (used when no vent option)	X	X	X	X	X	X	X	X	X	X	X	X
10	8201-130BX	Alarm Relay (Kit = CMC-35)	0	0	0	0	0	0	0	0	0	0	0	0
11	8201-130BX	Blower Speed Relay	X	X	X	X	X	X	X	X	X	X	X	X
12	8201-130BX	Dehumidification Control Relay				X	X	X				X	X	X
13	8201-159BX	Dirty Filter Relay (Kit = CMC-33)	0	0	0	0	0	0	0	0	0	0	0	0
14	8607-017BX	Terminal Block (LAC Kit = CMA-39)	0	0	0	0	0	0	0	0	0	0	0	0
15	8607-042BX	Blower Speed Terminal Block	X	X	X	X	X	X	X	X	X	X	X	X
16	8201-113BX	Dehumidification Logic Board				X	X	X				X	X	X
17	8201-176BX	Compressor Control Module	X	X	X	X	X	X	X	X	X	X	X	X
18	8407-068BX	Transformer	X	X		X	X	X	X	X		X	X	
18	8407-069BX	Transformer			X		X				X			X
19	8201-174BX	Phase Monitor		X	X		X	X		X	X		X	X
20	8552-079BX	Compressor Capacitor	X			X								
20	8552-057BX	Compressor Capacitor		X					X			X		
20	8552-005BX	Outdoor Motor Capacitor			X					X			X	
20	8552-004BX	Outdoor Motor Capacitor					X				X			X
21	8550-008BX	Capacitor Strap	X			X		X				X		
21	8550-003BX	Capacitor Strap		X	X		X	X		X	X		X	X
22	8551-004BX	Start Device (PTCR) (Kit = CMC-32)	0			0			0			0		
23	8401-034BX	Compressor Contactor	X			X		X				X		
23	8401-035BX	Compressor Contactor		X	X		X	X		X	X		X	X
NS	8615-037BX	Circuit Breaker 30A 2 Pole ①	0			0								
NS	8615-038BX	Circuit Breaker 35A 2 Pole ①						0				0		
NS	8615-051BX	Circuit Breaker 25A 3 Pole ①		0			0		0				0	
NS	8615-052BX	Circuit Breaker 30A 3 Pole ①									0			0
NS	8615-095BX	Toggle Disconnect			0			0			0			0
NS	4213-132	Wiring Diagram	X						X					
NS	4213-232	Wiring Diagram		X						X				
NS	4213-332	Wiring Diagram			X						X			
NS	4213-134	Wiring Diagram				X						X		
NS	4213-234	Wiring Diagram					X						X	
NS	4213-334	Wiring Diagram						X						X
NS	3000-1613BX	Blower Power Plug	X	X	X	X	X	X	X	X	X	X	X	X
NS	3000-1614BX	Blower Speed Plug							X	X	X	X	X	X
NS	3000-1690BX	Blower Speed Plug	X	X	X	X	X	X						
NS	3000-1222BX	Compressor Plug/Harness	X			X		X				X		
NS	3000-1230BX	Compressor Plug/Harness		X	X		X	X		X	X		X	X
NS	3003-176BX	Control Panel Wire Harness	X					X						
NS	3003-190BX	Control Panel Wire Harness					X	X					X	X
NS	3003-177BX	Control Panel Wire Harness		X	X				X	X				
NS	3003-189BX	Control Panel Wire Harness				X						X		
NS	3000-1608BX	Low Voltage Terminal Block Wire Harness	X	X	X	X	X	X	X	X	X	X	X	X

NS = Not Shown

X – Standard Component

O – Optional Component

① Circuit breakers listed are for units without electric heat, "0Z" models.
See heater replacement parts manual for units with electric heat.

CONTROL PANEL – STANDARD & DEHUMIDIFICATION

Dwg No.	Part Number	Description	W5SAF-A	W5SAF-B	W5SAF-C	W5SAF-DA	W5SAF-DB	W5SAF-DC
1	117-411BX	Control Panel	X	X	X	X	X	X
2	910-2108BX	Complete Low Voltage Box Assembly (Sheet metal, Terminal Strip, & Wire Harness)	X	X	X	X	X	X
3	135-394BX	Wire Shield	X	X	X	X	X	X
4	8611-140-3208BX	Cable Duct - 32.5"	X	X	X	X	X	X
5	8611-140-0608BX	Cable Duct - 6.5" x 1" wide	X	X	X	X	X	X
6	8611-244-0608BX	Cable Duct - 6.5" x 1.5" wide	X	X	X	X	X	X
7	8607-021BX	Low Voltage Terminal Strip - 8 term.	O	O	O	O	O	O
8	8607-071BX	Low Voltage Terminal Strip - 20 term.	X	X	X	X	X	X
9	3000-1524BX	Vent Jumper Plug (used when no vent option)	X	X	X	X	X	X
10	8201-130BX	Alarm Relay (Kit = CMA-42)	O	O	O	O	O	O
11	8201-130BX	Blower Speed Relay	X	X	X	X	X	X
12	8201-130BX	Dehumidification Control Relay				X	X	X
13	8201-130BX	Dirty Filter Relay (Kit = CMC-33)	O	O	O	O	O	O
14	8607-017BX	Terminal Block (LAC Kit = CMA-39)	O	O	O	O	O	O
15	8607-042BX	Blower Speed Terminal Block	X	X	X	X	X	X
17	8201-176BX	Compressor Control Module	X	X	X	X	X	X
18	8407-068BX	Transformer	X	X		X	X	
18	8407-069BX	Transformer			X			X
19	8201-174BX	Phase Monitor		X	X		X	X
20	8552-055BX	Compressor Capacitor	X			X		
20	8552-005BX	Outdoor Motor Capacitor		X			X	
20	8552-004BX	Outdoor Motor Capacitor			X			X
21	8550-008BX	Capacitor Strap	X			X		
21	8550-003BX	Capacitor Strap		X	X		X	X
22	8551-004BX	Start Device (PTCR)	O	O	O	O	O	O
23	8401-034BX	Compressor Contactor	X			X		
23	8401-035BX	Compressor Contactor		X	X		X	X
24	8201-130BX	Second Stage Dehumidification Relay				X	X	X
NS	8615-040BX	Circuit Breaker 50A 2 Pole ①	O			O		
NS	8615-052BX	Circuit Breaker 30A 3 Pole ①		O			O	
NS	8615-095BX	Toggle Disconnect			O			O
NS	4213-132	Wiring Diagram	X					
NS	4213-232	Wiring Diagram		X				
NS	4213-332	Wiring Diagram			X			
NS	4213-134	Wiring Diagram				X		
NS	4213-234	Wiring Diagram					X	
NS	4213-334	Wiring Diagram						X
NS	3000-1613BX	Blower Power Plug	X	X	X	X	X	X
NS	3000-1614BX	Blower Speed Plug	X	X	X	X	X	X
NS	3000-1222BX	Compressor Plug/Harness	X			X		
NS	3000-1230BX	Compressor Plug/Harness		X	X		X	X
NS	3000-1223BX	Staging Harness	X	X	X	X	X	X
NS	3003-176BX	Control Panel Wire Harness	X					
NS	3003-190BX	Control Panel Wire Harness		X	X			
NS	3003-177BX	Control Panel Wire Harness				X		
NS	3003-189BX	Control Panel Wire Harness					X	X
NS	3000-1608BX	Low Voltage Terminal Block Wire Harness	X	X	X	X	X	X

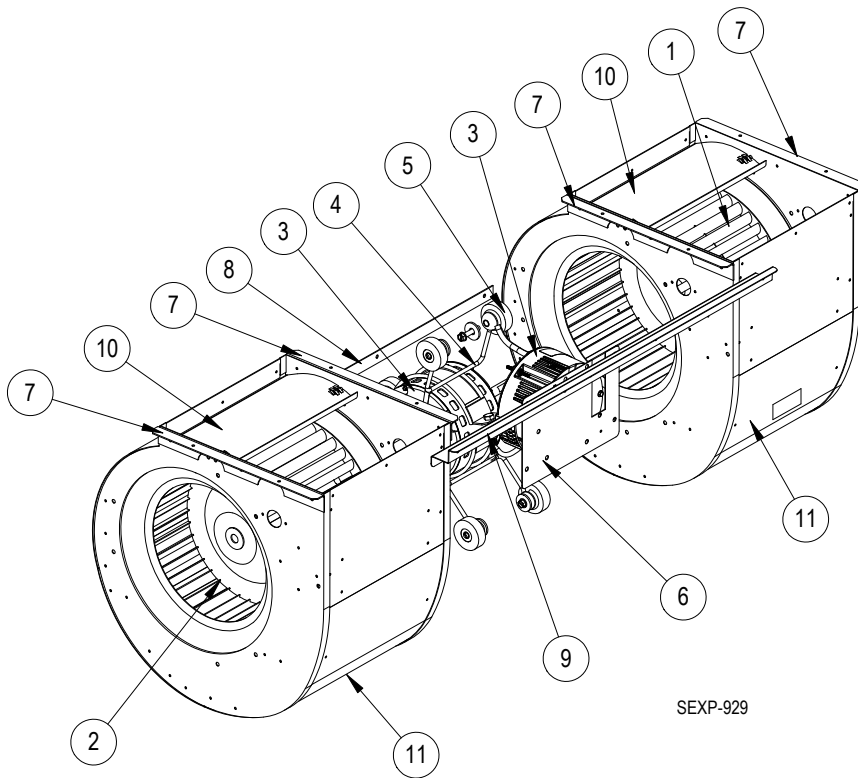
NS = Not Shown

X – Standard Component

① Circuit breakers listed are for units without electric heat, "OZ" models. See heater replacement parts manual for units with electric heat.

O – Optional Component

BLOWER ASSEMBLY



Dwg No.	Part Number	Description	900-387-0290BX	900-388-0289BX	900-368-0288BX	900-368-0287BX	900-369-0286BX	900-369-0285BX
1	5152-057BX	9 Inch Wheel (CW)	X	X				
1	5152-011BX	10 Inch Wheel (CW)			X	X	X	X
2	5152-058BX	9 Inch Wheel (CCW)	X	X				
2	5152-012BX	10 Inch Wheel (CCW)			X	X	X	X
3	8106-068-0290BX	Programmed Blower Motor & Control (230/208V)	X					
3	8106-069-0289BX	Programmed Blower Motor & Control (460V)		X				
3	8107-028-0288BX	Programmed Blower Motor & Control (230/208V)			X			
3	8107-028-0287BX	Programmed Blower Motor & Control (230/208V)				X		
3	8107-029-0286BX	Programmed Blower Motor & Control (460V)					X	
3	8107-029-0285BX	Programmed Blower Motor & Control (460V)						X
3	C8106-068-0290	Programmed Control Only (230/208V)	0					
3	C8106-069-0289	Programmed Control Only (460V)		0				
3	C8107-028-0288	Programmed Control Only (230/208V)			0			
3	C8107-028-0287	Programmed Control Only (230/208V)				0		
3	C8107-029-0286	Programmed Control Only (460V)					0	
3	C8107-029-0285	Programmed Control Only (460V)						0
4	8200-040BX	Motor Mount	X	X	X	X	X	X
5	5451-011	Grommets	6	6	6	6	6	6
6	112-775BX	Motor Control Bracket	X	X	X	X	X	X
7	105-880BX	Side Angle	4	4	4	4	4	4
8	105-881BX	Back Brace	X	X	X	X	X	X
9	103-541BX	Front Mounting Offset	X	X	X	X	X	X
10	144-166BX	Diffuser	2	2	2	2	2	2
11	151-101BX	Blower Housing	2	2	2	2	2	2

X – Standard Component
O – Optional Component