
REPLACEMENT PARTS MANUAL

FUSION-TEC® Wall-Mount Air Conditioner

Models: WR35BPA WR36BPA WR58BPA
WR35BPB WR36BPB WR58BPB

Contents

| Description | Page | Description | Page |
|--------------------------------------|------|-----------------------------------|------|
| Cabinet Components | | Heater Packages – WR35BP* | |
| ♦ Exploded View | 2 | ♦ Exploded View | 17 |
| ♦ Usage Lists | 3-4 | ♦ Usage List | 17 |
| Functional Components | | Heater Packages – WR36BP*/WR58BP* | |
| ♦ Layout View | 6 | ♦ Exploded View | 18 |
| ♦ Usage Lists | 7-8 | ♦ Usage List | 18 |
| Control Panel – 1 Phase | | Freecooling Damper Motor | |
| ♦ Layout View | 10 | ♦ Layout View | 19 |
| ♦ Usage List | 11 | ♦ Usage List | 19 |
| Control Panel – 3 Phase | | Anti-Theft Kit (Optional) | |
| ♦ Layout View | 12 | ♦ Layout View | 20 |
| ♦ Usage List | 13 | ♦ Usage List | 20 |
| Blower Assembly Components – WR35BP* | | | |
| ♦ Exploded View | 14 | | |
| ♦ Usage List | 14 | | |
| Blower Assembly Components – WR36BP* | | | |
| ♦ Exploded View | 15 | | |
| ♦ Usage List | 15 | | |
| Blower Assembly Components – WR58BP* | | | |
| ♦ Exploded View | 16 | | |
| ♦ Usage List | 16 | | |

General Notes

- Revised and/or additional pages may be issued from time to time.
- A complete and current manual consists of pages shown in the following contents section.

Important

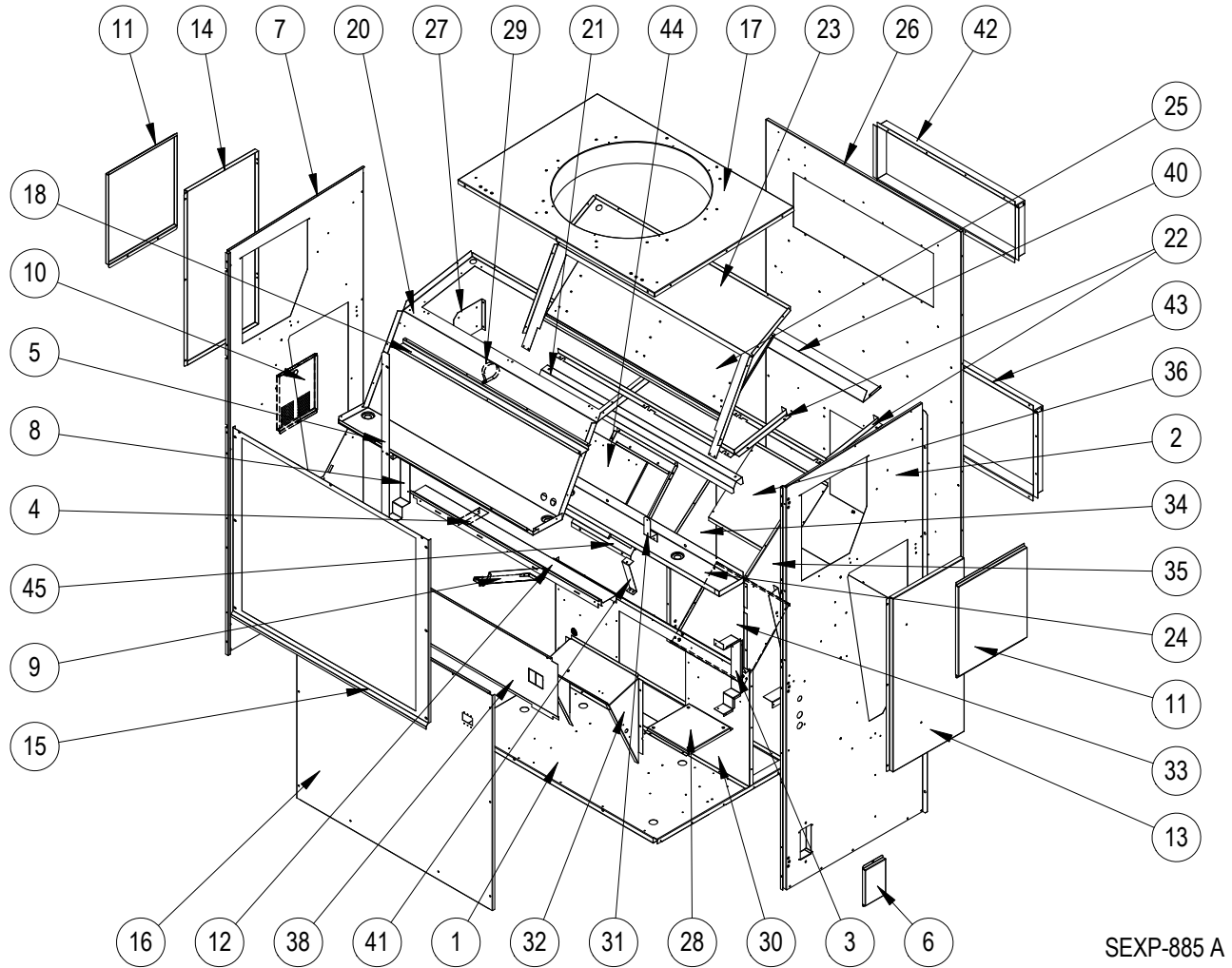
- Contact the installing and/or local Bard distributor for all parts requirements. Make sure to have the complete model and serial number available from the unit rating plates.



Bard Manufacturing Company, Inc.
Bryan, Ohio 43506
www.bardhvac.com

Manual: 2110-1547P
Supersedes: 2110-15470
Date: 7-22-24

CABINET COMPONENTS



SEXP-885 A

NOTE: When replacing parts in the upper condenser area, note any use of caulk as a sealant. Be sure to replace caulk seals using 100% silicone outdoor-rated caulk.

This drawing is referenced in tables on pages 3 and 4

CABINET COMPONENTS

| Dwg No. | Part Number | Description | WR35BPA | WR35BPB |
|---------|---------------|---|---------|---------|
| 1 | 527-545 | Unit Base | X | X |
| 2 | S501-1015-* ① | Right Side | X | X |
| 3 | 105X1434 | Right Control Panel Angle | X | X |
| 4 | 105-1416 | Drain Pan Angle | X | X |
| 5 | 105-1447 | Condenser Coil Fill | X | X |
| 6 | S543-212-* ① | Coremax Box Cover | X | X |
| 7 | 501-1016-* ① | Left Side Assembly | X | X |
| 8 | 105Y1434 | Left Control Panel Angle | X | X |
| 9 | 113-696 | Wire Bracket | X | X |
| 10 | S553-704-* ① | Sensor Access Door | X | X |
| 11 | S143-217-* ① | Condenser Access Panel | 2 | 2 |
| 12 | S135-893-* ① | Coil Riser | X | X |
| 13 | S543-215-* ① | Right Filter Panel | X | X |
| 14 | S543-218-* ① | Left Filter Panel | X | X |
| 15 | 118-120-* ① | Condenser Grille | X | X |
| 16 | S533-293-* ① | Control Panel Cover | X | X |
| 17 | S107-384-* ① | Unit Top | X | X |
| 18 | 137-892 | Upper Condenser Fill | X | X |
| 20 | 521-560-* ① | Lower Condenser Partition w/ Damper Frame | X | X |
| 21 | 131-167 | Upper Filter Angle | X | X |
| 22 | 111-295 | Outdoor Air Frame | X | X |
| 23 | 521-564-* ① | Upper Condenser Partition | X | X |
| 24 | S123-155 | Drain Pan | X | X |
| 25 | 921-0055 | Exhaust Damper Blade Assembly | X | X |
| 26 | S509-397 | Back Assembly | X | X |
| 27 | 113-677 | Motor Control Bracket | X | X |
| 28 | 127-555 | Compressor Isolation Plate | X | X |
| 29 | 8550-011 | 2-1/2" Single Hole Strap | X | X |
| 30 | 521-565 | Evaporator Partition | X | X |
| 31 | 113-718 | Filter Switch Hose Bracket | X | X |
| 32 | 105-1435 | Left Blower Mounting Angle | X | X |
| 32 | 105-1443 | Right Blower Mounting Angle | X | X |
| 33 | 539-372 | Supply Duct Bottom | X | X |
| 34 | 539-373 | Supply Duct Left | X | X |
| 35 | 539-374 | Supply Duct Right | X | X |
| 36 | 539-375 | Supply Duct Top | X | X |
| 38 | S133-294 | Inner Control Panel Cover | X | |
| 38 | S133-311 | Inner Control Panel Cover | | X |
| 40 | 143-216 | Evaporator Coil Cover | X | X |
| 42 | 111-296 | Return Air Frame | X | X |
| 43 | 111-297 | Supply Air Frame | X | X |
| 44 | S139-376 | Outdoor Damper Blade | 2 | 2 |
| 45 | 105-1432 | Outdoor Damper Frame | 2 | 2 |
| NS | 113-740 | Rain Flashing | X | X |
| NS | 113-704 | Motor Cradle | X | X |
| NS | S518-121 | Lower Intake Grille Assembly | X | X |
| NS | 5252-033 | Bard Nameplate | X | X |

① Standard unit exterior cabinet parts are manufactured with various paint color options. To ensure the proper paint color is received, please reference the following codes: Beige -X, White -1, Buckeye Gray -4, Desert Brown -5, Dark Bronze -8

NS – Not Shown

CABINET COMPONENTS

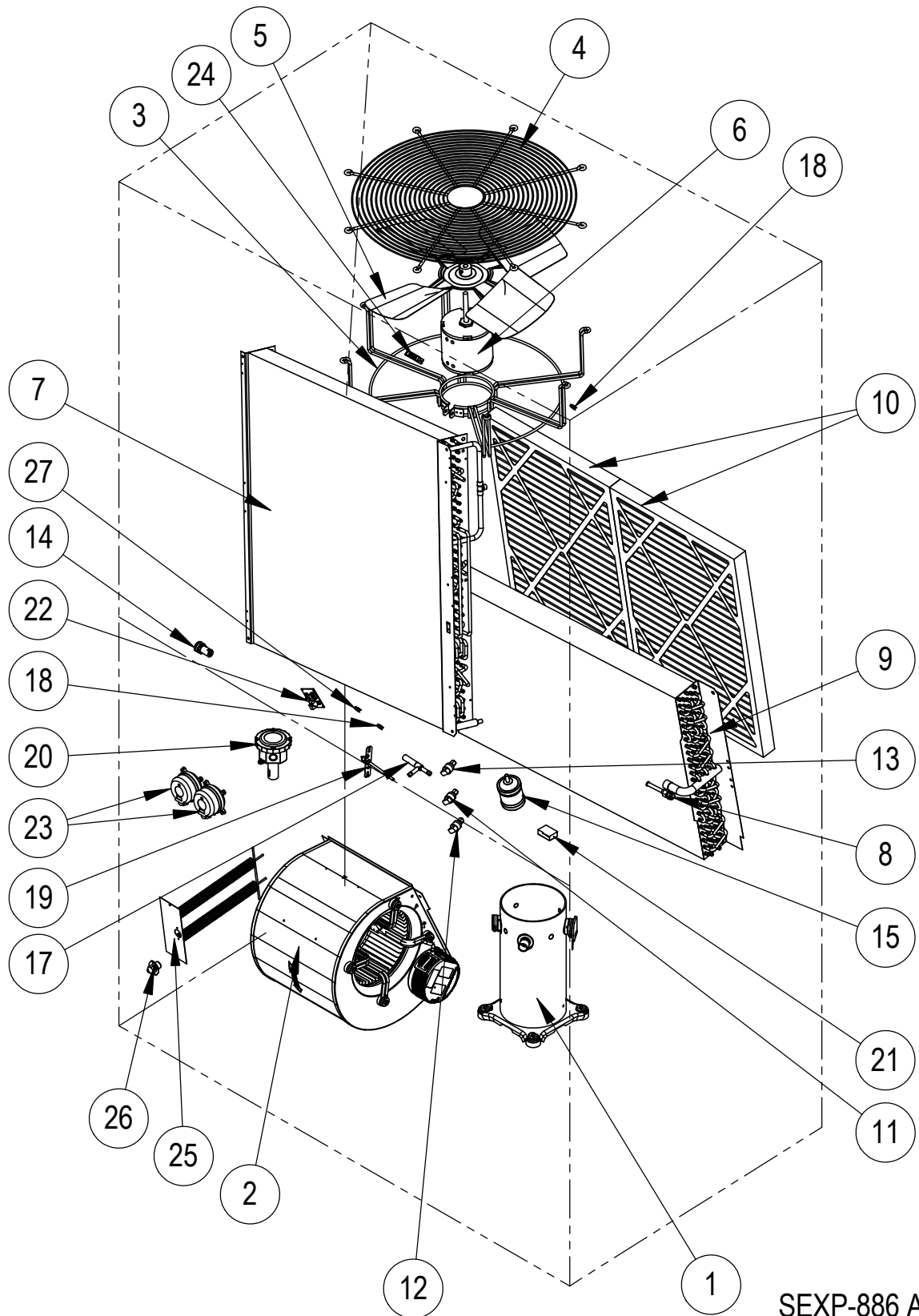
| Dwg No. | Part Number | Description | WR36BPA | WR36BPB | WR58BPA | WR58BPB |
|---------|---------------|---|---------|---------|---------|---------|
| 1 | 527-573 | Unit Base | X | X | X | X |
| 2 | S501-1001-* ① | Right Side – Standard Unit | X | X | X | X |
| 3 | 105X1413 | Right Control Panel Angle | X | X | X | X |
| 4 | 105-1416 | Drain Pan Angle | 2 | 2 | 2 | 2 |
| 5 | 105-1425 | Condenser Coil Angle | X | X | X | X |
| 6 | S543-212-* ① | Coremax Box Cover | X | X | X | X |
| 7 | S501-1002-* ① | Left Side Assembly – Standard Unit | X | X | X | X |
| 8 | 105Y1413 | Left Control Panel Angle | X | X | X | X |
| 9 | 113-681 | Wire Bracket | X | X | X | X |
| 10 | S553-704-* ① | Sensor Access Door | X | X | X | X |
| 11 | S143-210-* ① | Condenser Access Panel | 2 | 2 | 2 | 2 |
| 12 | S135-383-* ① | Rain Channel/Coil Riser | X | X | X | X |
| 13 | S543-211-* ① | Right Filter Panel | X | X | X | X |
| 14 | S543-213-* ① | Left Filter Panel | X | X | X | X |
| 15 | 118-117-* ① | Condenser Grille | X | X | X | X |
| 16 | S533-288-* ① | Control Panel Cover | X | X | X | X |
| 17 | S107-381-* ① | Unit Top | X | X | X | X |
| 18 | 137-880 | Upper Condenser Fill | X | X | X | X |
| 20 | 521-558-* ① | Lower Condenser Partition w/ Damper Frame | X | X | X | X |
| 21 | 131-166 | Upper Filter Angle | X | X | X | X |
| 22 | 111-273 | Outdoor Air Frame | X | X | X | X |
| 23 | 521-554-* ① | Upper Condenser Partition | X | X | X | X |
| 24 | S123-154 | Drain Pan | X | X | X | X |
| 25 | 921-0035 | Exhaust Damper Blade Assembly | X | X | X | X |
| 26 | S509-392 | Back Assembly | X | X | X | X |
| 27 | 113-677 | Motor Control Bracket | X | X | X | X |
| 28 | 127-555 | Compressor Isolation Plate | X | X | X | X |
| 29 | 8550-011 | 2-1/2" Single Hole Strap | X | X | X | X |
| 30 | 521-555 | Evaporator Partition | X | X | X | X |
| 31 | 113-678 | Filter Switch Hose Bracket | X | X | X | X |
| 32 | 111-332 | Blower Mounting Duct Flange Top | X | X | X | X |
| 32 | 111X333 | Blower Mounting Duct Flange Right | X | X | X | X |
| 32 | 111Y333 | Blower Mounting Duct Flange Left | X | X | X | X |
| 33 | 539-363 | Supply Duct Bottom | X | X | X | X |
| 34 | 539-364 | Supply Duct Left | X | X | X | X |
| 35 | 539-365 | Supply Duct Right | X | X | X | X |
| 36 | 539-366 | Supply Duct Top | X | X | X | X |
| 38 | S133-290 | Inner Control Panel Cover | X | | X | |
| 38 | S133-295 | Inner Control Panel Cover | | X | | X |
| 40 | 143-214 | Evaporator Coil Cover | X | X | X | X |
| 41 | 113-682 | EEV Bracket | X | X | X | X |
| 42 | 111-115 | Return Air Frame | X | X | X | X |
| 43 | 111-270 | Supply Air Frame | X | X | X | X |
| 44 | S139-367 | Outdoor Damper Blade | 2 | 2 | 2 | 2 |
| 45 | S105-1414 | Outdoor Damper Frame | 2 | 2 | 2 | 2 |
| NS | 113-150-* ① | Rain Flashing | X | X | X | X |
| NS | 113-704 | Motor Cradle Mount | X | X | X | X |
| NS | S518-119 | Lower Intake Grille Assembly | X | X | X | X |
| NS | 5252-033 | Bard Nameplate | X | X | X | X |

① Standard unit exterior cabinet parts are manufactured with various paint color options. To ensure the proper paint color is received, please reference the following codes: Beige -X, White -1, Buckeye Gray -4, Desert Brown -5, Dark Bronze -8

NS – Not Shown

This page intentionally left blank

FUNCTIONAL COMPONENTS



SEXP-886 A

FUNCTIONAL COMPONENTS

| Dwg No. | Part Number | Description | WR35BPA | WR35BPB | WR36BPA | WR36BPB |
|---------|-----------------|---|---------|---------|---------|---------|
| 1 | 8000-440 | Compressor | X | | | |
| 1 | 8000-442 | Compressor | | X | | |
| 1 | 8000-379 | Compressor | | | X | |
| 1 | 8000-380 | Compressor | | | | X |
| 2 | 900-362-0154BX | Blower Assembly | X | X | | |
| 2 | 5154-002-0146BX | Blower Assembly | | | X | X |
| 3 | 8200-054 | Condenser Motor Mount | X | X | | |
| 3 | 8200-055 | Condenser Motor Mount | | | X | X |
| 4 | 7051-094 | Condenser Discharge Grille | 2 | 2 | | |
| 4 | 7051-091 | Condenser Discharge Grille | | | 2 | 2 |
| 5 | 5151-064 | Fan Blade | X | X | | |
| 5 | 5151-062 | Fan Blade | | | X | X |
| 6 | 8106-061-0167 | Condenser Fan Motor | X | X | | |
| 6 | S8105-070-0145 | Condenser Fan Motor | | | X | X |
| 7 | 5051-218 | Condenser Coil | X | X | | |
| 7 | 5054-218 | Condenser Coil – Coated | X | X | | |
| 7 | 5051-217 | Condenser Coil | | | X | X |
| 7 | 5054-217 | Condenser Coil – Coated | | | X | X |
| 8 | 800-0417 | Distributor Assembly | X | X | | |
| 8 | 800-0460 | Distributor Assembly | | | X | X |
| 9 | 917-0349 | Evaporator Coil | X | X | | |
| 9 | 917-0350 | Evaporator Coil – Coated | X | X | | |
| 9 | 917-0343 | Evaporator Coil | | | X | X |
| 9 | 917-0344 | Evaporator Coil – Coated | | | X | X |
| 10 | 7004-068 | Air Filter MERV 8 (18"x22"x2") | 2 | 2 | 2 | 2 |
| 10 | 7004-027 | Air Filter MERV 8 (20"x30"x2") | 2 | 2 | 2 | 2 |
| 11 | 8406-157 | Liquid Line Pressure Transducer | X | X | X | X |
| 12 | 8406-158 | Suction Pressure Transducer | X | X | X | X |
| 13 | 8406-142 | High Pressure Switch | X | X | X | X |
| 14 | 8611-199 | Filter Service LED | X | X | X | X |
| 15 | 5201-021 | Filter Drier | X | X | | |
| 15 | 5201-022 | Filter Drier | | | X | X |
| 17 | 5651S244 | Electronic Expansion Valve (less cable and stator – see NS below) | X | X | X | X |
| 18 | 8408-044 | Return Air Sensor | X | X | X | X |
| 18 | 8408-054 | Suction Temp Sensor | X | X | X | X |
| 19 | 8301-066 | Supply Air Temp Sensor | X | X | X | X |
| 20 | 8301-067 | Outdoor Temp and Humidity Sensor | X | X | X | X |
| 21 | 8301-073 | Dust (Particulate) Sensor | X | X | X | X |
| 22 | 8612-061 | Dust (Particulate) Sensor Board | X | X | X | X |
| 23 | 8301-057 | Filter Switch w/Adjustment | X | X | X | X |
| 23 | 8301-057 | Blower Fail Switch w/Adjustment | X | X | X | X |
| 24 | 8406-150 | Damper Blade Switch | X | X | X | X |
| 25 | -- | Reference pages 17 and 18 | X | X | X | X |
| 26 | -- | Reference pages 17 and 18 | X | X | X | X |
| 27 | 8408-045 | Liquid Line Temp Sensor | X | X | X | X |
| NS | 6301-009 | Coremax Valve Core | 2 | 2 | 2 | 2 |
| NS | 8605-019 | Compressor Crankcase Heater ① | X | X | X | X |
| NS | 8602-040 | Damper Hinge | 7 | 7 | 7 | 7 |
| NS | 8602-095 | 22" Rod | 2 | 2 | | |
| NS | 8602-084 | 37-1/4" Rod | | | 2 | 2 |
| NS | 5651-246 | Electronic Expansion Valve Cable and Stator | X | X | X | X |
| NS | 8615-092 | Circuit Breaker Boot | X | X | X | X |

① – Optional on these models

NS – Not Shown

FUNCTIONAL COMPONENTS

| Dwg No. | Part Number | Description | WR58BPA | WR58BPB |
|---------|----------------|---|---------|---------|
| 1 | 8000-385 | Compressor | X | |
| 1 | 8000-386 | Compressor | | X |
| 2 | S5154-007-0142 | Blower Assembly | X | X |
| 3 | 8200-055 | Condenser Motor Mount | X | X |
| 4 | 7051-091 | Condenser Discharge Grille | 2 | 2 |
| 5 | 5151-062 | Fan Blade | X | X |
| 6 | S8106-061-0132 | Condenser Fan Motor | X | X |
| 7 | 5051-216 | Condenser Coil | X | X |
| 7 | 5054-216 | Condenser Coil – Coated | X | X |
| 8 | 800-0417 | Distributor Assembly | X | X |
| 9 | 917-0339 | Evaporator Coil | X | X |
| 9 | 917-0340 | Evaporator Coil – Coated | X | X |
| 10 | 7004-027 | Air Filter MERV 8 (20"x30"x2") | 2 | 2 |
| 11 | 8406-157 | Liquid Line Pressure Transducer | X | X |
| 12 | 8406-158 | Suction Pressure Transducer | X | X |
| 13 | 8406-142 | High Pressure Switch | X | X |
| 14 | 8611-199 | Filter Service LED | X | X |
| 15 | 5201-022 | Filter Drier | X | X |
| 17 | 5651S245 | Electronic Expansion Valve (less cable and stator – see NS below) | X | X |
| 18 | 8408-044 | Return Air Sensor | X | X |
| 18 | 8408-054 | Suction Temp Sensor | X | X |
| 19 | 8301-066 | Supply Air Temp Sensor | X | X |
| 20 | 8301-067 | Outdoor Temp and Humidity Sensor | X | X |
| 21 | 8301-073 | Dust (Particulate) Sensor | X | X |
| 22 | 8612-061 | Dust (Particulate) Sensor Board | X | X |
| 23 | 8301-057 | Filter Switch w/Adjustment | X | X |
| 23 | 8301-057 | Blower Fail Switch w/Adjustment | X | X |
| 24 | 8406-150 | Damper Blade Switch | X | X |
| 25 | -- | Reference page 18 | X | X |
| 26 | -- | Reference page 18 | X | X |
| 27 | 8408-045 | Liquid Line Temp Sensor | X | X |
| NS | 6301-009 | Coremax Valve Core | 2 | 2 |
| NS | 8605-017 | Compressor Crankcase Heater ① | X | X |
| NS | 8602-040 | Damper Hinge | 7 | 7 |
| NS | 8602-084 | 37-1/4" Rod | 2 | 2 |
| NS | 5651-246 | Electronic Expansion Valve Cable and Stator | X | X |
| NS | 8615-092 | Circuit Breaker Boot | X | X |

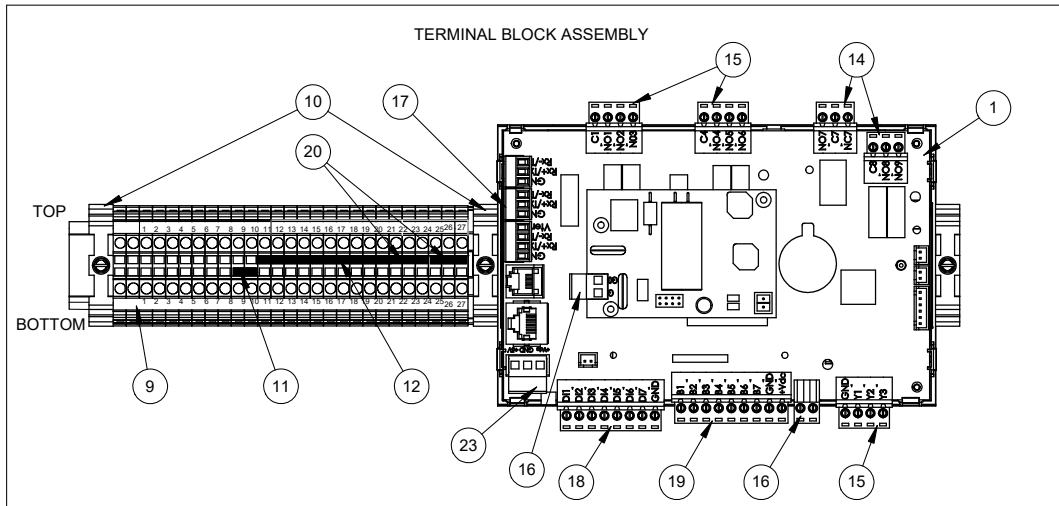
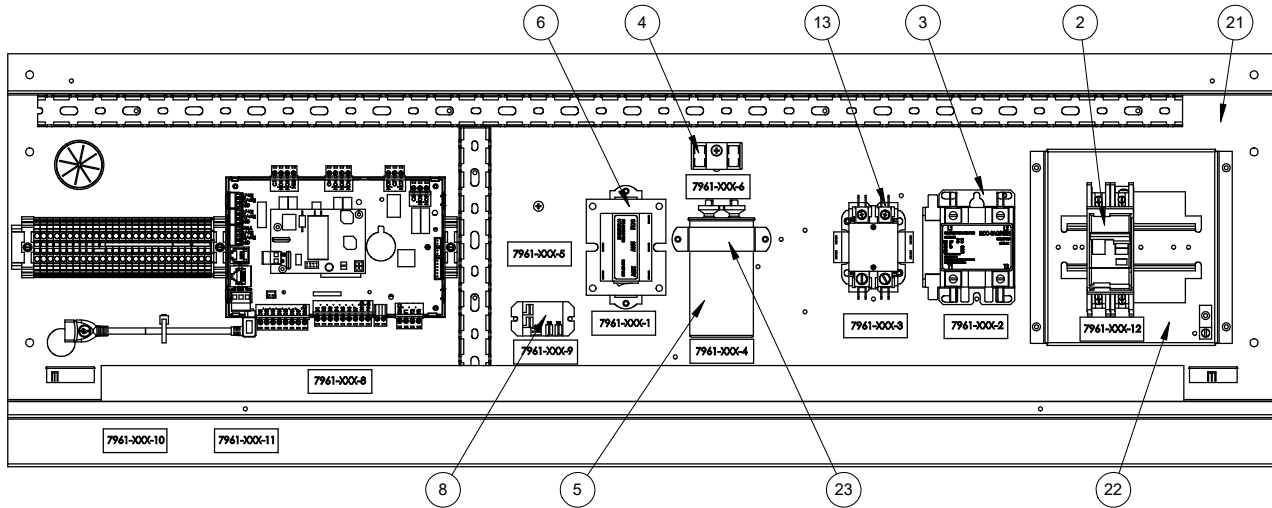
① – Optional on these models

NS – Not Shown

This table references drawing on page 6

This page intentionally left blank

CONTROL PANEL - 1 PHASE



SEXP-887 C

CONTROL PANEL – 1 PHASE

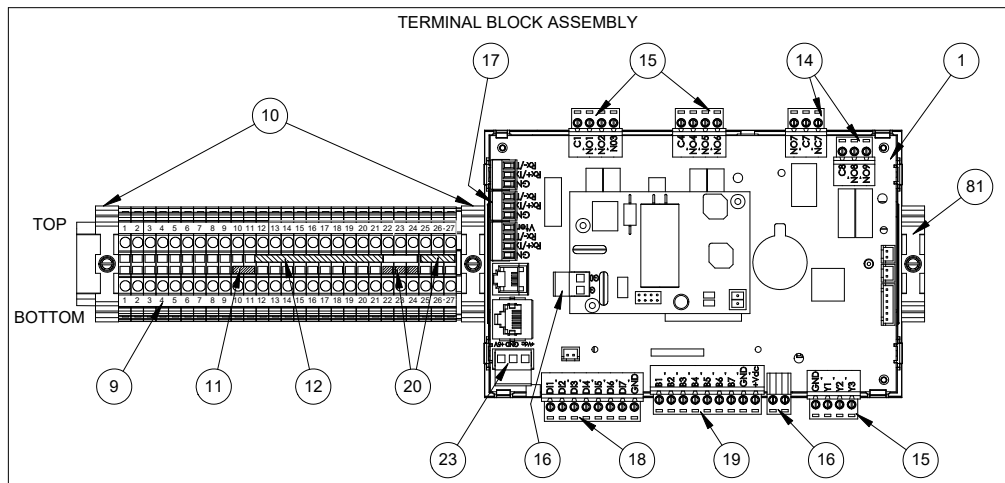
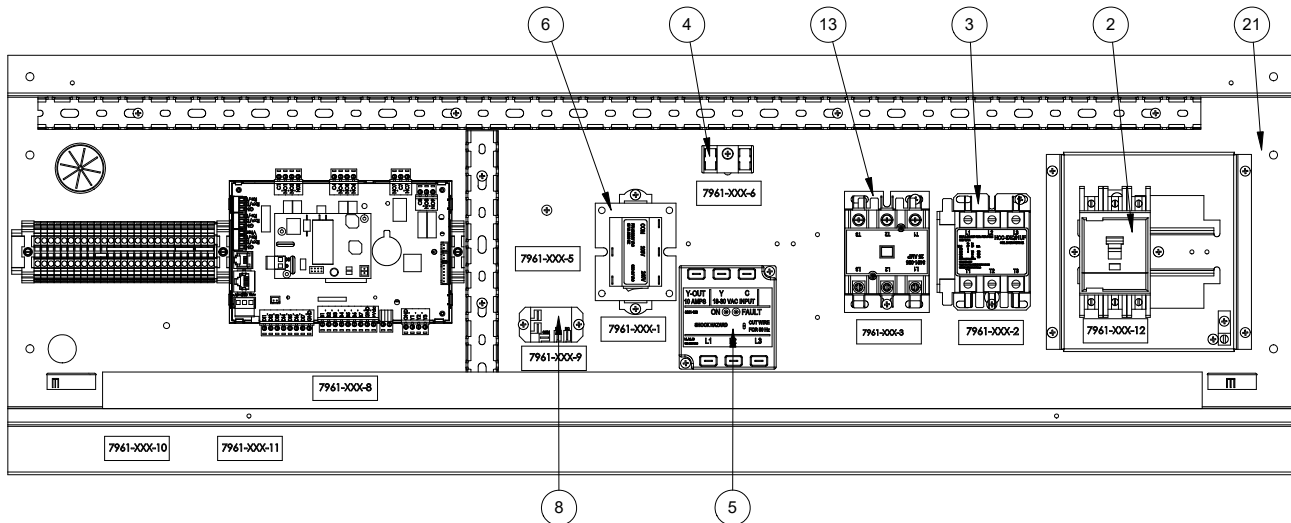
| Dwg No. | Part Number | Description | WR35BPA | WR36BPA | WR56BPA |
|---------|---------------|---------------------------------------|---------|---------|---------|
| 1 | 8301-098-003* | UPC3 C2 FUSION-TEC WR | X | X | X |
| 2 | 8615-097 | Circuit Breaker 35A 2-Pole | X | X | |
| 2 | 8615-098 | Circuit Breaker 60A 2-Pole | | | X |
| 3 | 8401-038 | Contactora 2-Pole 40 Amp (Compressor) | X | X | X |
| 4 | 8607-017 | Terminal Block 240V 2 Terminal | X | X | X |
| 5 | 8552-043 ① | Capacitor 45MFD 370V 2.5" R | X | | |
| 5 | 8552-035 ① | Capacitor 40MFD 370V 1.5" R | | X | |
| 5 | 8552-096 | Capacitor 40MFD 440V 2" R | | | X |
| 6 | 8407-065 | Transformer 208/240-24 75VA | X | X | X |
| 7 | 8201-176BX | Compressor Control Module | X | X | X |
| 8 | 8201-130 | Relay Pilot Duty | X | X | X |
| 9 | 8611-150 | DIN Rail Terminal Block | X | X | X |
| 10 | 8611-144 | DIN Rail End Clamp | X | X | X |
| 11 | 8611-194 | 2 Position Jumper | X | X | X |
| 12 | 8611-203 | 10 Position Jumper | X | X | X |
| 13 | 8401-034 | Contactora 2-Pole 40 Amp (Heat) | X | X | X |
| 14 | 8611-147 | 3-Pin Circuit Board Connector | 3 | 3 | 3 |
| 15 | 8611-148 | 4-Pin Circuit Board Connector | 3 | 3 | 3 |
| 16 | 8611-183 | 2-Pin Circuit Board Connector | 2 | 2 | 2 |
| 17 | 8611-192 | 3-Pin Circuit Board Connector | 1 | 1 | 1 |
| 18 | 8611-185 | 8-Pin Circuit Board Connector | 1 | 1 | 1 |
| 19 | 8611-149 | 9-Pin Circuit Board Connector | 1 | 1 | 1 |
| 20 | 8611-208 | 3 Position Jumper | 2 | 2 | 2 |
| 21 | 517-401 | Control Panel | X | | |
| 21 | 517-400 | Control Panel | | X | X |
| 22 | 127-556 | Circuit Breaker Base | X | X | X |
| 23 | 8550-008 | Capacitor Bracket 2.5" | X | | |
| 23 | 8550-007 | Capacitor Bracket 2.0" | | | X |
| 23 | 8550-006 | Capacitor Bracket 1.5" | | X | |
| NS | 8301-088 | USB A to Micro B 90° Cable | X | X | X |

* Replacement part will have a letter attached to the end of the part number to designate software version (Example: 8301-098-003**A**). A software upgrade of all PLCs onsite (units and controllers) should accompany any PLC replacement. Latest revisions of software, change log and instructions are available on the Bard website at <http://www.bardhvac.com/software-download/>

① Capacitor mounted to WR35/36BPA control panel

Wiring diagram reference listed under **HEATER PACKAGES** on pages 17 and 18

CONTROL PANEL - 3 PHASE



SEXP-891 B

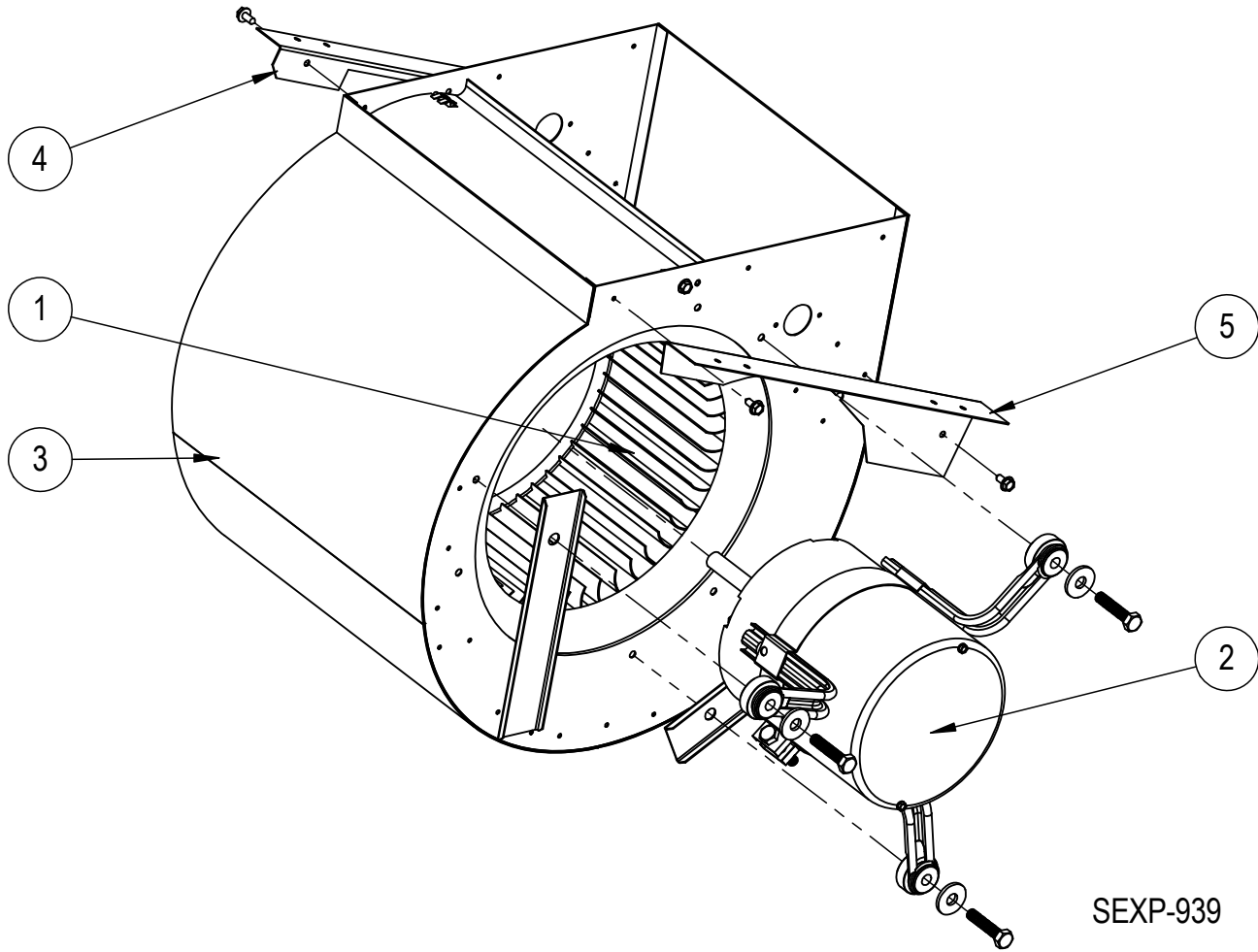
CONTROL PANEL – 3 PHASE

| Dwg No. | Part Number | Description | WR35BPB | WR36BPB | WR58BPB |
|---------|---------------|---------------------------------------|---------|---------|---------|
| 1 | 8301-098-003* | UPC3 C2 FUSION-TEC WR | X | X | X |
| 2 | 8615-099 | Circuit Breaker 45A 3-Pole | | | X |
| 2 | 8615-100 | Circuit Breaker 30A 3-Pole | X | X | |
| 3 | 8401-037 | Contactora 3-Pole 30 Amp (Compressor) | X | X | X |
| 4 | 8607-017 | Terminal Block 240V 2 Terminal | X | X | X |
| 5 | 8201-174BX | 3 Phase Line Monitor 50/60 HZ | X | X | X |
| 6 | 8407-065 | Transformer 208/240-24 75VA | X | X | X |
| 7 | 8201-176BX | Compressor Control Module | X | X | X |
| 8 | 8201-130 | Relay Pilot Duty | X | X | X |
| 9 | 8611-150 | DIN Rail Terminal Block | X | X | X |
| 10 | 8611-144 | DIN Rail End Clamp | X | X | X |
| 11 | 8611-194 | 2 Position Jumper | X | X | X |
| 12 | 8611-203 | 10 Position Jumper | X | X | X |
| 13 | 8401-035 | Contactora 3-Pole 25 Amp (Heat) | X | X | X |
| 14 | 8611-147 | 3-Pin Circuit Board Connector | 3 | 3 | 3 |
| 15 | 8611-148 | 4-Pin Circuit Board Connector | 3 | 3 | 3 |
| 16 | 8611-183 | 2-Pin Circuit Board Connector | 2 | 2 | 2 |
| 17 | 8611-192 | 3-Pin Circuit Board Connector | 1 | 1 | 1 |
| 18 | 8611-185 | 8-Pin Circuit Board Connector | 1 | 1 | 1 |
| 19 | 8611-149 | 9-Pin Circuit Board Connector | 1 | 1 | 1 |
| 20 | 8611-208 | 3 Position Jumper | 2 | 2 | 2 |
| 21 | 517-400 | Control Panel | | X | X |
| 21 | 517-401 | Control Panel | X | | |
| 22 | 127-556 | Circuit Breaker Base | X | X | X |
| NS | 8301-088 | USB A to Micro B 90° Cable | X | X | X |

* Replacement part will have a letter attached to the end of the part number to designate software version (Example: 8301-098-003**A**). A software upgrade of all PLCs onsite (units and controllers) should accompany any PLC replacement. Latest revisions of software, change log and instructions are available on the Bard website at <http://www.bardhvac.com/software-download/>

Wiring diagram reference listed under **HEATER PACKAGES** on page 18

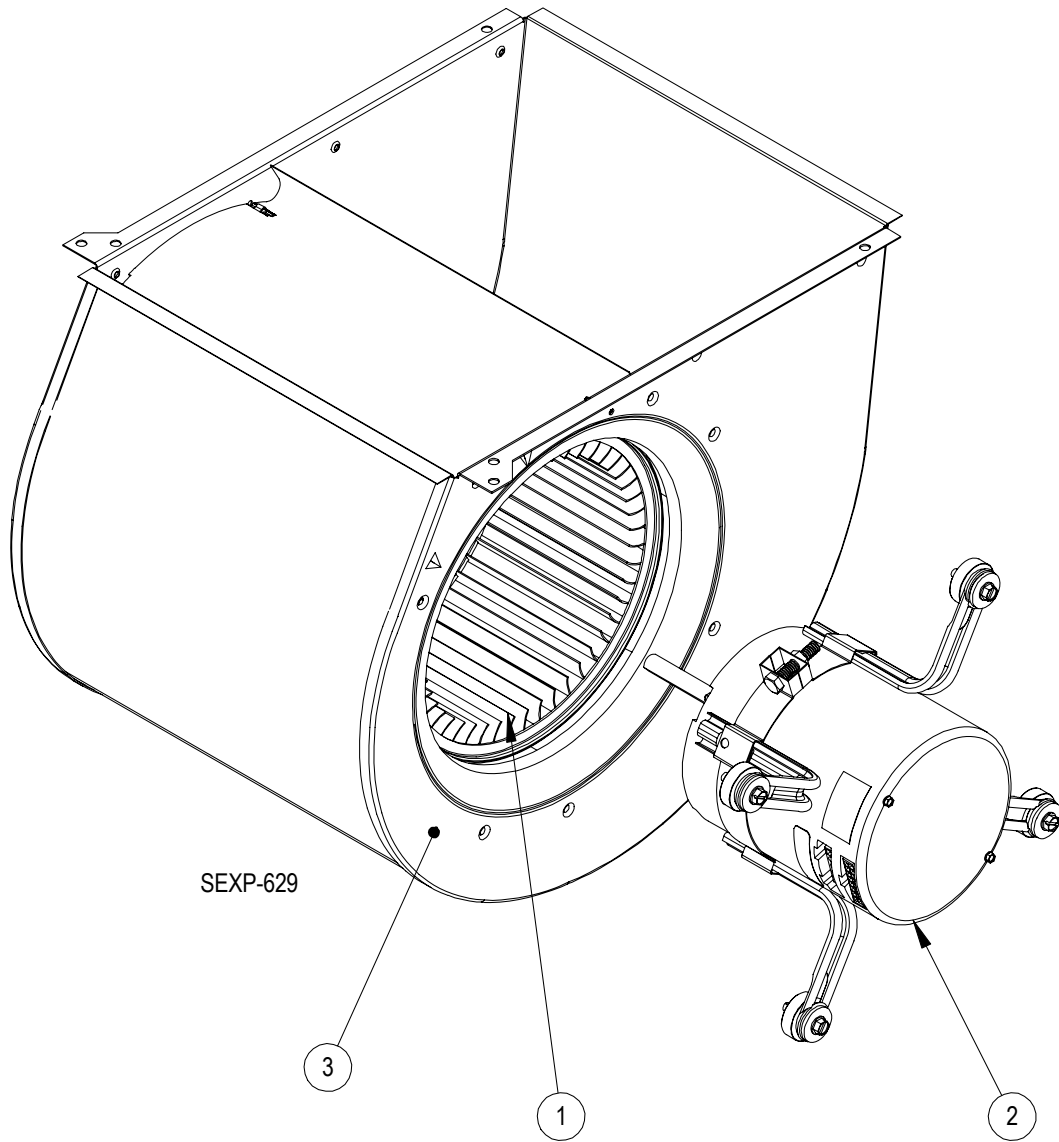
BLOWER ASSEMBLY COMPONENTS - WR35BP*



900-362-0154BX

| Drawing No. | Part Number | Description | |
|-------------|-----------------|-------------------------|---|
| 1 | 5152-014 | Blower Wheel | X |
| 2 | 8106-072-0154BX | 1/3 HP Programmed Motor | X |
| 3 | 151-126 | Housing | X |
| 4 | 105-1435 | Left Mounting Angle | X |
| 5 | 105-1443 | Right Mounting Angle | X |
| NS | 3000-1145 | Power Harness | X |
| NS | 3000-1578 | 0-10VDC Adapter Wire | X |

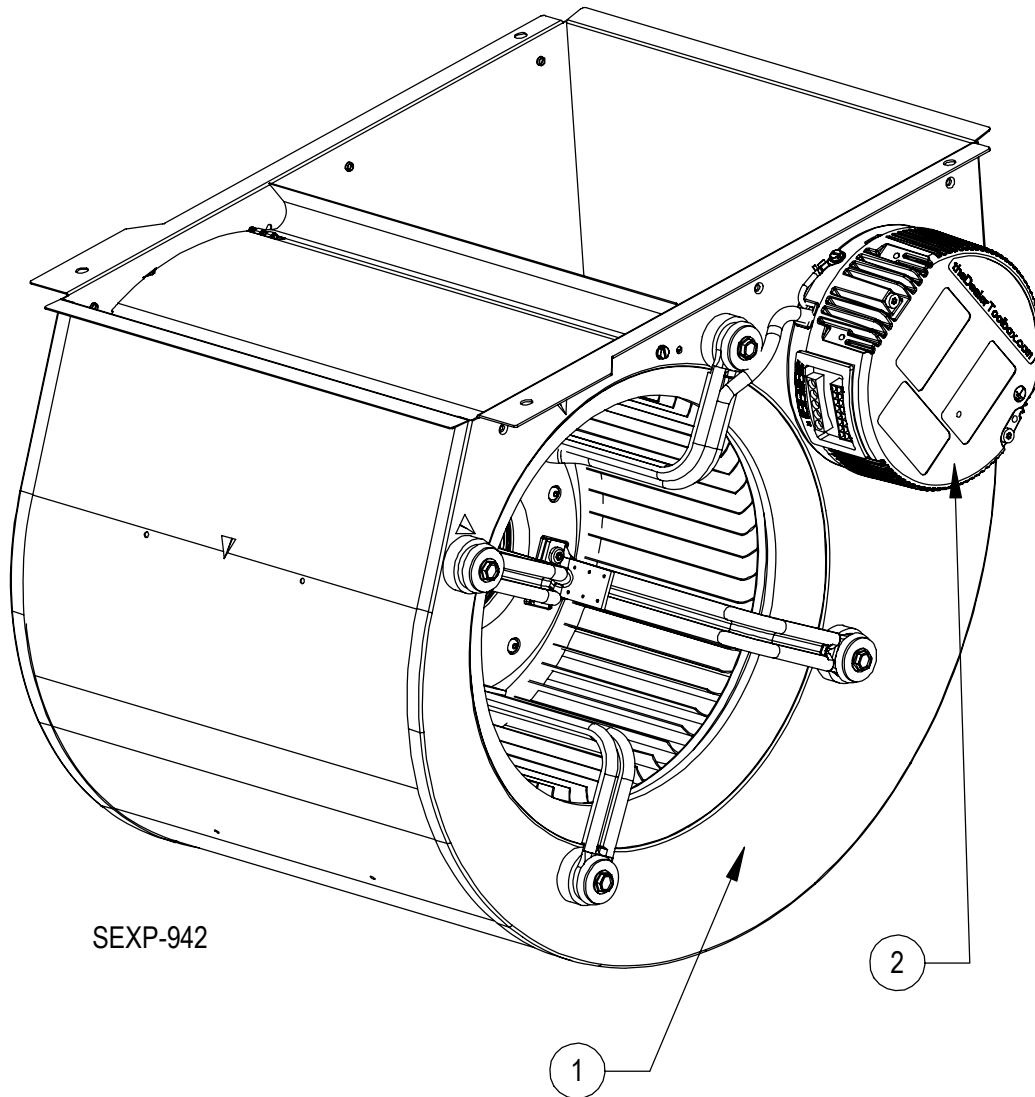
BLOWER ASSEMBLY COMPONENTS – WR36BP*



5154-002-0146

| Drawing No. | Part Number | Description | |
|-------------|-----------------|-------------------------|---|
| 1 | 5152-049 | Blower Wheel | X |
| 2 | 8105-076-0146BX | 1/3 HP Programmed Motor | X |
| 3 | 151-122 | Housing | X |
| NS | 3000-1145 | Power Harness | X |
| NS | 3000-1578 | 0-10VDC Adapter Wire | X |

BLOWER ASSEMBLY COMPONENTS - WR58BP*



**Drawing
No.**

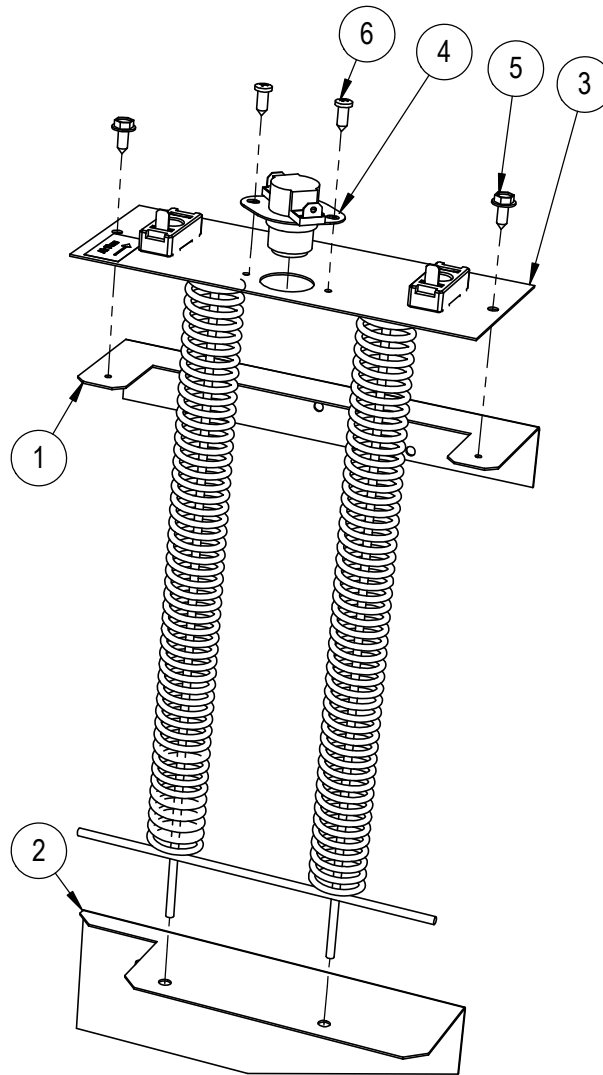
Part Number

Description

5154-007-0142

| | | | |
|----|---------------|-----------------------|---|
| 1 | 5154-007-0142 | Complete Blower Wheel | X |
| NS | 3000-1145 | Power Harness | X |
| NS | 3000-1578 | 0-10VDC Adapter Wire | X |

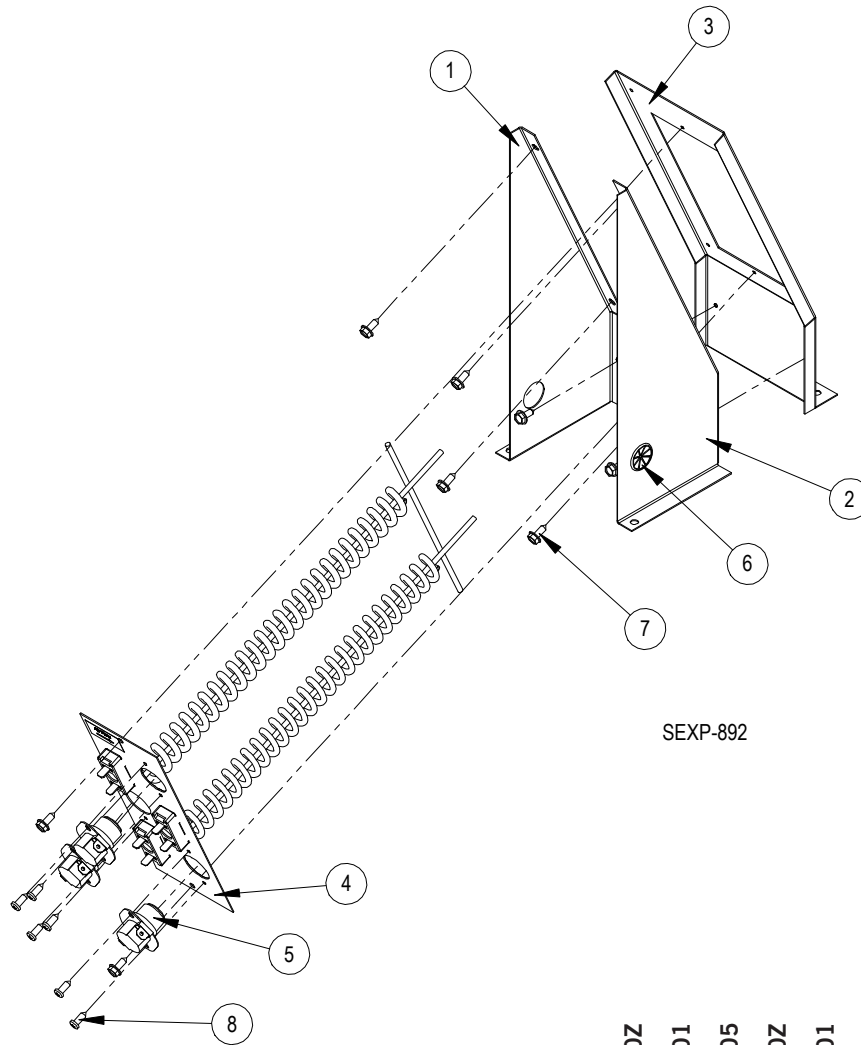
HEATER PACKAGES – WR35BP*



SEXP-940

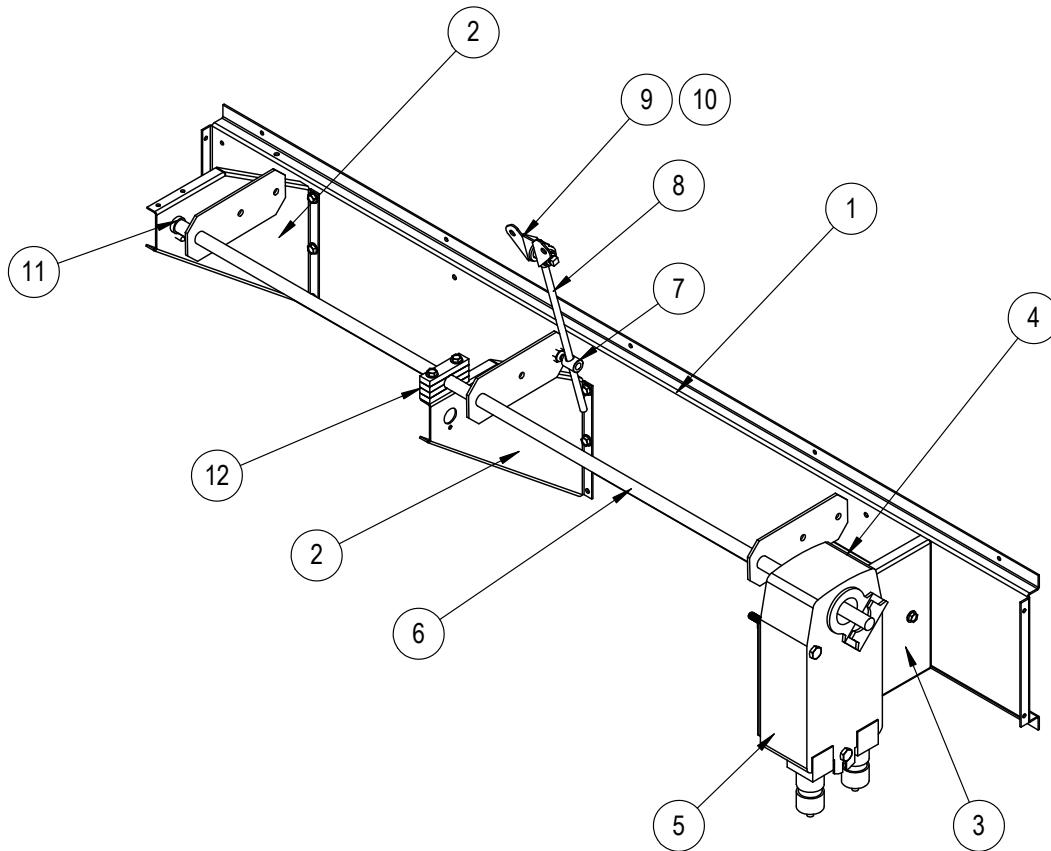
| Dwg No. | Part Number | Description | WR35BPA0Z | WR35BPA01 | WR35BPA05 | WR35BPA0Z | WR35BPA05 |
|---------|-------------|---------------------------------|-----------|-----------|-----------|-----------|-----------|
| 1 | 113-709 | Top Heater Support | | X | X | | X |
| 2 | 113-710 | Lower Heater Support | | X | X | | X |
| 3 | 8604-150 | Heat Strip 1.5KW 240V 2 Term | | X | | | |
| 3 | 8604-148 | Heat Strip 5.0KW 240V 2 Term | | | X | | |
| 3 | 8604-149 | Heat Strip 6.0KW 240V 3 PH | | | | | X |
| 4 | 8402-190 | Limit Control 130P/150BU | | 1 | 1 | | 1 |
| 5 | 1012-065 | Screw, Type AB PZPNHD #8-18X3/8 | | 6 | 6 | | 6 |
| 6 | 1012-086 | Screw, Type AB HXWHD #10-16X1/2 | | 6 | 6 | | 6 |
| NS | 4208-100 | Wiring Diagram | X | | | | |
| NS | 4208-101 | Wiring Diagram | | X | X | | |
| NS | 4208-200 | Wiring Diagram | | | | X | |
| NS | 4208-201 | Wiring Diagram | | | | | X |

HEATER PACKAGES – WR36BP*/WR58BP*



| Dwg No. | Part Number | Description | WR36BPA0Z | WR36BPA01 | WR36BPA05 | WR58BPA0Z | WR58BPA01 | WR58BPA05 | WR36BPB0Z | WR36BPB05 | WR58BPB0Z | WR58BPB05 |
|---------|-------------|---------------------------------|-----------|-----------|-----------|-----------|-----------|-----------|-----------|-----------|-----------|-----------|
| 1 | 113Y671 | Left Heater Support | | X | X | | X | X | | X | | X |
| 2 | 113X671 | Right Heater Support | | X | X | | X | X | | X | | X |
| 3 | 113-668 | Heater Bracket Front | | X | X | | X | X | | X | | X |
| 4 | 8604-150 | Heat Strip 1.5KW 240V 2 Term | | X | | | X | | | | | |
| 4 | 8604-148 | Heat Strip 5.0KW 240V 2 Term | | | X | | | X | | | | |
| 4 | 8604-149 | Heat Strip 6.0KW 240V 3PH | | | | | | | | X | | X |
| 5 | 8402-190 | Limit Control 130P/150BU | | 1 | 1 | | 1 | 1 | | 3 | | 3 |
| 6 | 8611-016 | Universal Bushing | | X | X | | X | X | | X | | X |
| 7 | 1012-065 | Screw, Type AB PZPNHD #8-18X3/8 | | 6 | 6 | | 6 | 6 | | 6 | | 6 |
| 8 | 1012-086 | Screw, Type AB HXWHD #10-16X1/2 | | 8 | 8 | | 8 | 8 | | 8 | | 8 |
| NS | 4208-100 | Wiring Diagram | X | | | X | | | | | | |
| NS | 4208-101 | Wiring Diagram | | X | X | | X | X | | | | |
| NS | 4208-200 | Wiring Diagram | | | | | | | X | | X | |
| NS | 4208-201 | Wiring Diagram | | | | | | | | X | | X |

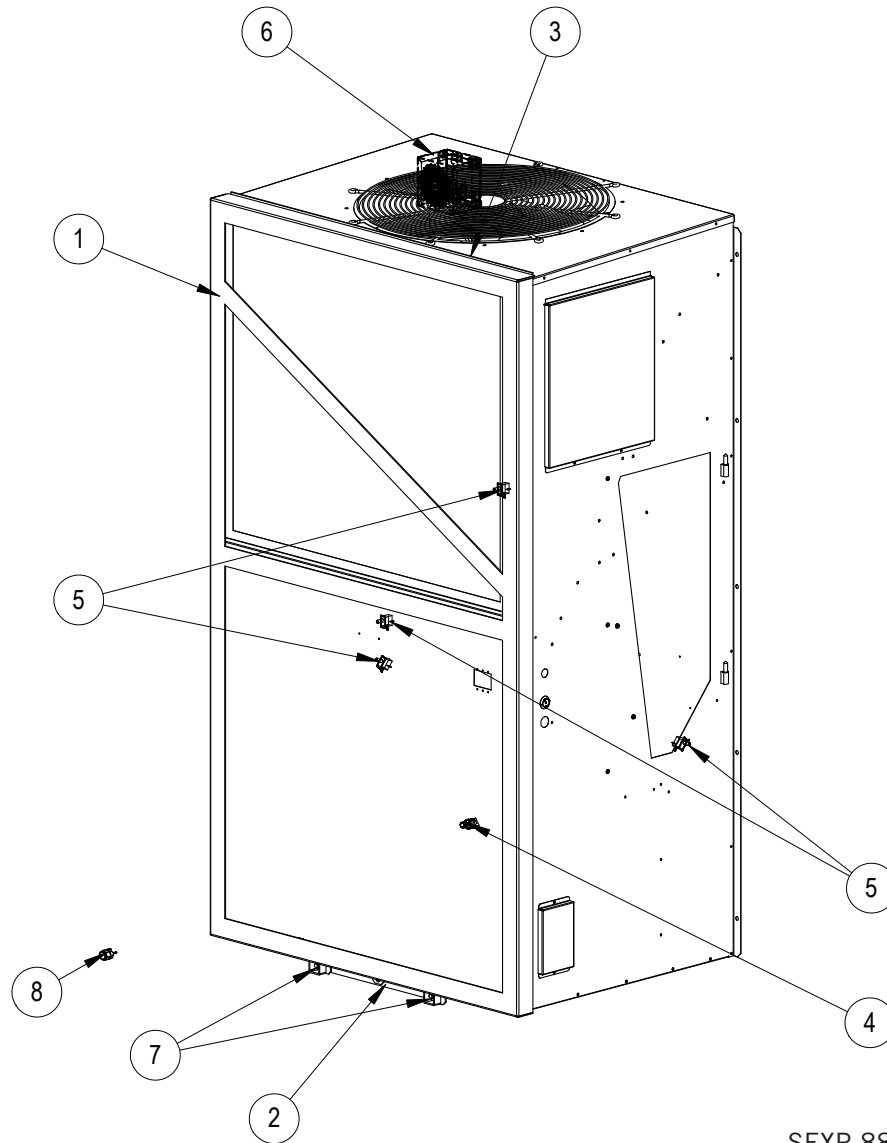
FREECOOLING DAMPER MOTOR



SEXP-902

| Dwg. No. | Part Number | Description | WR35BP | WR36BP | WR58BP |
|----------|-------------|-------------------------------|--------|--------|--------|
| 1 | 103-537 | Actuator Support Channel | X | | |
| 1 | 103-538 | Actuator Support Channel | | X | X |
| 2 | 113-712 | Actuator Rod Support Bracket | 2 | 2 | 2 |
| 3 | 113-711 | Actuator Mounting Bracket | X | X | X |
| 4 | 141-326 | Actuator Gusset | X | X | X |
| 5 | 8602-093 | 90 in/lb Actuator | X | X | X |
| 6 | 8602-101 | Actuator Drive Rod Assembly | | X | X |
| 6 | 8602-102 | Actuator Drive Rod Assembly | X | | |
| 7 | 8602-008 | Ball Joint | 2 | 2 | 2 |
| 8 | 8602-042 | 1/4" x 6" Rod | X | | |
| 8 | 8602-091 | 1/4" x 8-1/2" Rod | | X | X |
| 9 | 8602-040 | Pivot Rod Bracket | X | X | X |
| 10 | 1012-348 | 1/2" x 3/4" Nylon Flat Washer | 2 | 2 | 2 |
| 11 | 8602-052 | 1/2" I.D. Bronze Bushing | X | X | X |
| 12 | 8602-087 | Cradle Bushing | 2 | 2 | 2 |

ANTI-THEFT KIT (OPTIONAL)



SEXP-888A

| Dwg No. | Part Number | Description | WR35BP* | WR36BP* | WR58BP* |
|---------|-------------|-------------------------|---------|---------|---------|
| 1 | 9050-004 | Frame Assembly | | X | X |
| 1 | 9050-008 | Frame Assembly | X | | |
| 2 | 9050-005 | Base Bracket | X | X | X |
| 3 | 9050-006 | Top Bracket | | X | X |
| 3 | 9050-007 | Top Bracket | X | | |
| 4 | 8406-135 | Low Pressure Switch | X | X | X |
| 5 | 8406-156 | Panel Switch | 4 | 4 | 4 |
| 6 | 910-2038 | Speaker Assembly | X | X | X |
| 7 | 1012-346 | Tri-Groove Nut | 2 | 2 | 2 |
| 8 | 2151-022 | Tri-Groove Socket – Key | X | X | X |