

---

# REPLACEMENT PARTS MANUAL

---

## Wall Mount Heat Pump

Models:

C36HY-A C42HY-A C48HY-A C60HY-A  
C36HY-B C42HY-B C48HY-B C60HY-B  
C36HY-C C42HY-C C48HY-C C60HY-C

---

### Contents

| Description                                 | Page |
|---|------|
| External Parts – Standard                   |      |
| ♦ Exploded View .....                       | 2    |
| ♦ Usage List .....                          | 3    |
| ♦ Usage List .....                          | 4    |
| External Parts – Recessed Cabinet           |      |
| ♦ Exploded View .....                       | 6    |
| ♦ Usage List .....                          | 7    |
| Internal Parts – Standard & Recessed        |      |
| ♦ Exploded View .....                       | 8    |
| ♦ Usage List .....                          | 9    |
| Functional Components – Standard & Recessed |      |
| ♦ Exploded View .....                       | 10   |
| ♦ Usage List .....                          | 11   |
| ♦ Usage List .....                          | 12   |
| Control Panel – Standard & Recessed         |      |
| ♦ Layout View .....                         | 14   |
| ♦ Usage List .....                          | 15   |
| ♦ Usage List .....                          | 16   |
| Blower Assembly                             |      |
| ♦ Exploded View .....                       | 17   |
| ♦ Usage List .....                          | 17   |

### General Notes

- Revised and/or additional pages may be issued from time to time.
- A complete and current manual consists of pages shown in the following contents section.

### Important

- Contact the installing and/or local Bard distributor for all parts requirements. Make sure to have the complete model and serial number available from the unit rating plates.

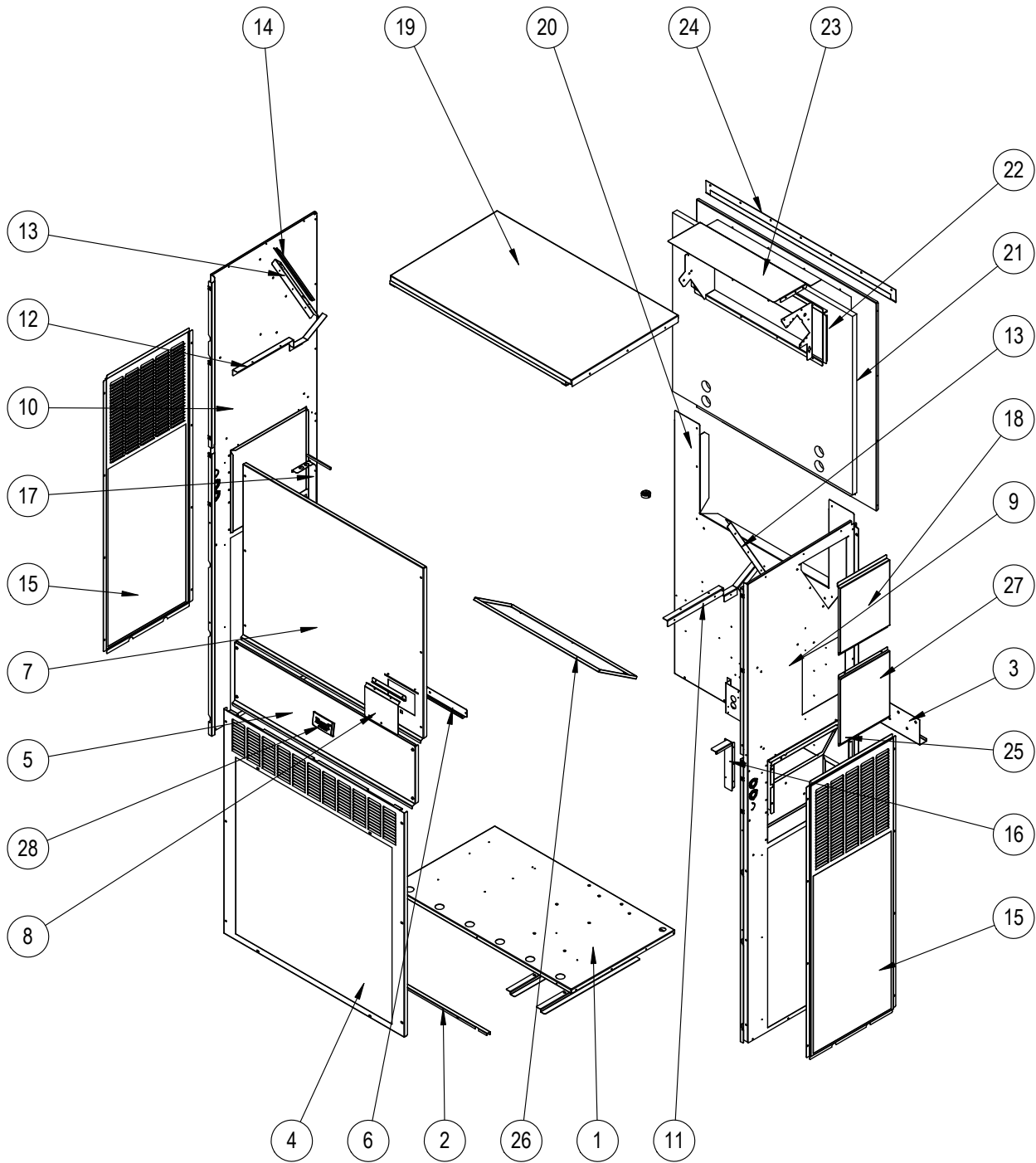


*Climate Control Solutions*

Bard Manufacturing Company, Inc.  
Bryan, Ohio 43506  
[www.bardhvac.com](http://www.bardhvac.com)

Manual: 2110-1575F  
Supersedes: 2110-1575E  
Date: 4-19-24

# EXTERNAL PARTS - STANDARD



SEXP-1099

This drawing to be used for reference for pages 3 and 4

## EXTERNAL PARTS – STANDARD

| Dwg No. | Part Number    | Description                      | C36HY-A, B, C | C42HY-A, B, C | C48HY-A, B, C | C60HY-A, B, C |
|---------|----------------|----------------------------------|---------------|---------------|---------------|---------------|
| 1       | 127-616BX      | Base (only)                      | X             | X             | X             | X             |
| 1       | 527-616BX      | Base Assembly w/Compressor Plate | X             | X             | X             | X             |
| 1       | 127-617BX ③    | Base (only)                      | 0             | 0             | 0             | 0             |
| 1       | 527-617BX ③    | Base Assembly w/Compressor Plate | 0             | 0             | 0             | 0             |
| 2       | 113-762BX      | Front Base Bracket               | X             | X             | X             | X             |
| 2       | 113-797BX ③    | Front Base Bracket               | 0             | 0             | 0             | 0             |
| 3       | 113-140BX      | Bottom Mounting Bracket          | X             | X             | X             | X             |
| 4       | 119-125-*BX ①  | Front Grille                     | X             | X             |               |               |
| 4       | 119-148BX ②    | Front Grille                     | 0             | 0             |               |               |
| 4       | 119-135BX ③    | Front Grille                     | 0             | 0             |               |               |
| 4       | 119-127-*BX ①  | Front Grille                     |               |               | X             | X             |
| 4       | 119-149BX ②    | Front Grille                     |               |               | 0             | 0             |
| 4       | 119-137BX ③    | Front Grille                     |               |               | 0             | 0             |
| 5       | 533-301-*BX ①  | Control Panel Cover (Outer)      | X             | X             | X             | X             |
| 5       | 533-309BX ②    | Control Panel Cover (Outer)      | 0             | 0             | 0             | 0             |
| 5       | 533-310BX ③    | Control Panel Cover (Outer)      | 0             | 0             | 0             | 0             |
| 6       | 165-608-*BX ①  | Rain Channel                     | X             | X             | X             | X             |
| 6       | 165-609BX ②    | Rain Channel                     | 0             | 0             | 0             | 0             |
| 6       | 165-610BX ③    | Rain Channel                     | 0             | 0             | 0             | 0             |
| 7       | 515-323-*BX ①  | Upper Front                      | X             | X             |               |               |
| 7       | 515-328BX ②    | Upper Front                      | 0             | 0             |               |               |
| 7       | 515-330BX ③    | Upper Front                      | 0             | 0             |               |               |
| 7       | 515-324-*BX ①  | Upper Front                      |               |               | X             | X             |
| 7       | 515-329BX ②    | Upper Front                      |               |               | 0             | 0             |
| 7       | 515-331BX ③    | Upper Front                      |               |               | 0             | 0             |
| 8       | 153-717-*BX ①  | Disconnect Access Door           | X             | X             | X             | X             |
| 8       | 153-723BX ②    | Disconnect Access Door           | 0             | 0             | 0             | 0             |
| 8       | 153-724BX ③    | Disconnect Access Door           | 0             | 0             | 0             | 0             |
| 9       | 501-1127-*BX ① | Right Side Assembly              | X             | X             |               |               |
| 9       | 501-1128BX ②   | Right Side Assembly              | 0             | 0             |               |               |
| 9       | 501-1129BX ③   | Right Side Assembly              | 0             | 0             |               |               |
| 9       | 501-1130-*BX ① | Right Side Assembly              |               |               | X             | X             |
| 9       | 501-1131BX ②   | Right Side Assembly              |               |               | 0             | 0             |
| 9       | 501-1132BX ③   | Right Side Assembly              |               |               | 0             | 0             |
| 10      | 501-1054-*BX ① | Left Side Assembly               | X             | X             |               |               |
| 10      | 501-1073BX ②   | Left Side Assembly               | 0             | 0             |               |               |
| 10      | 501-1077BX ③   | Left Side Assembly               | 0             | 0             |               |               |
| 10      | 501-1056-*BX ① | Left Side Assembly               |               |               | X             | X             |
| 10      | 501-1075BX ②   | Left Side Assembly               |               |               | 0             | 0             |
| 10      | 501-1079BX ③   | Left Side Assembly               |               |               | 0             | 0             |
| 11      | 105X1454BX     | Right Support Angle              | X             | X             | X             | X             |
| 12      | 105Y1454BX     | Left Support Angle               | X             | X             | X             | X             |
| 13      | 105-1457BX     | Coil Support                     | 2             | 2             |               |               |
| 13      | 105-1455BX     | Coil Support                     |               |               | 2             | 2             |
| 14      | 147-055BX      | Coil Support Offset              | X             | X             |               |               |
| 14      | 147-054BX      | Coil Support Offset              |               |               | X             | X             |

*Continued on page 4*

① Exterior cabinet parts are manufactured with various paint color options. To ensure the proper paint color is received, include the complete model and serial number of the unit for which cabinet parts are being ordered.

② Exterior cabinet parts are manufactured from aluminum Code "A"

③ Exterior cabinet parts are manufactured from stainless steel Code "S"

X – Standard Component  
O – Optional Component

# EXTERNAL PARTS – STANDARD

| Dwg No.                      | Part Number   | Description               | C36HY-A, B, C | C42HY-A, B, C | C48HY-A, B, C | C60HY-A, B, C |
|------------------------------|---------------|---------------------------|---------------|---------------|---------------|---------------|
| <i>Continued from page 3</i> |               |                           |               |               |               |               |
| 15                           | 119-126-*BX ① | Side Grille               | 2             | 2             |               |               |
| 15                           | 119-142BX ②   | Side Grille               | 2             | 2             |               |               |
| 15                           | 119-136BX ③   | Side Grille               | 2             | 2             |               |               |
| 15                           | 119-128-*BX ① | Side Grille               |               |               | 2             | 2             |
| 15                           | 119-143BX ②   | Side Grille               |               |               | 2             | 2             |
| 15                           | 119-138BX ③   | Side Grille               |               |               | 2             | 2             |
| 16                           | 105-1450BX    | Right Control Panel Angle | X             | X             | X             | X             |
| 17                           | 105-1451BX    | Left Control Panel Angle  | X             | X             | X             | X             |
| 18                           | 543-221-*BX ① | Heater Access Cover       | X             | X             | X             | X             |
| 18                           | 543-228BX ②   | Heater Access Cover       | 0             | 0             | 0             | 0             |
| 18                           | 543-229BX ③   | Heater Access Cover       | 0             | 0             | 0             | 0             |
| 19                           | 507-382-*BX ① | Top                       | X             | X             | X             | X             |
| 19                           | 507-391BX ②   | Top                       | 0             | 0             | 0             | 0             |
| 19                           | 507-392BX ③   | Top                       | 0             | 0             | 0             | 0             |
| 20                           | 109-412BX     | Lower Back                | X             | X             |               |               |
| 20                           | 109-418BX     | Lower Back                | 0             | 0             |               |               |
| 20                           | 109-422BX ③   | Lower Back                | 0             | 0             |               |               |
| 20                           | 109-414BX     | Lower Back                |               |               | X             | X             |
| 20                           | 109-420BX     | Lower Back                |               |               | 0             | 0             |
| 20                           | 109-424BX ③   | Lower Back                |               |               | 0             | 0             |
| 21                           | 509-411BX     | Upper Back                | X             | X             |               |               |
| 21                           | 509-417BX     | Upper Back                | 0             | 0             |               |               |
| 21                           | 509-421BX ③   | Upper Back                | 0             | 0             |               |               |
| 21                           | 509-413BX     | Upper Back                |               |               | X             | X             |
| 21                           | 509-419BX     | Upper Back                |               |               | 0             | 0             |
| 21                           | 509-423BX ③   | Upper Back                |               |               | 0             | 0             |
| 22                           | 111-299BX     | Outlet Air Frame Assembly | X             | X             | X             | X             |
| 23                           | 535-129BX     | Heat Shield               | X             | X             | X             | X             |
| 24                           | 113-150-*BX ① | Top Rain Flashing         | X             | X             | X             | X             |
| 24                           | 113-150-4BX ② | Top Rain Flashing         | 0             | 0             | 0             | 0             |
| 24                           | 113-359BX ③   | Top Rain Flashing         | 0             | 0             | 0             | 0             |
| 25                           | 539-406BX     | Fresh Air Damper Assembly | X             | X             | X             | X             |
| 25                           | 543-222BX     | Intake Blank-Off Plate    | 0             | 0             | 0             | 0             |
| 26                           | 543-220BX     | Exhaust Blank-Off Plate   | X             | X             | X             | X             |
| 27                           | 543-248-*BX ① | Access Cover              | X             | X             | X             | X             |
| 27                           | 543-250BX ②   | Access Cover              | 0             | 0             | 0             | 0             |
| 27                           | 543-251BX ③   | Access Cover              | 0             | 0             | 0             | 0             |
| 28                           | 5252-033BX    | Bard Nameplate            | X             | X             | X             | X             |

NS = Not Shown

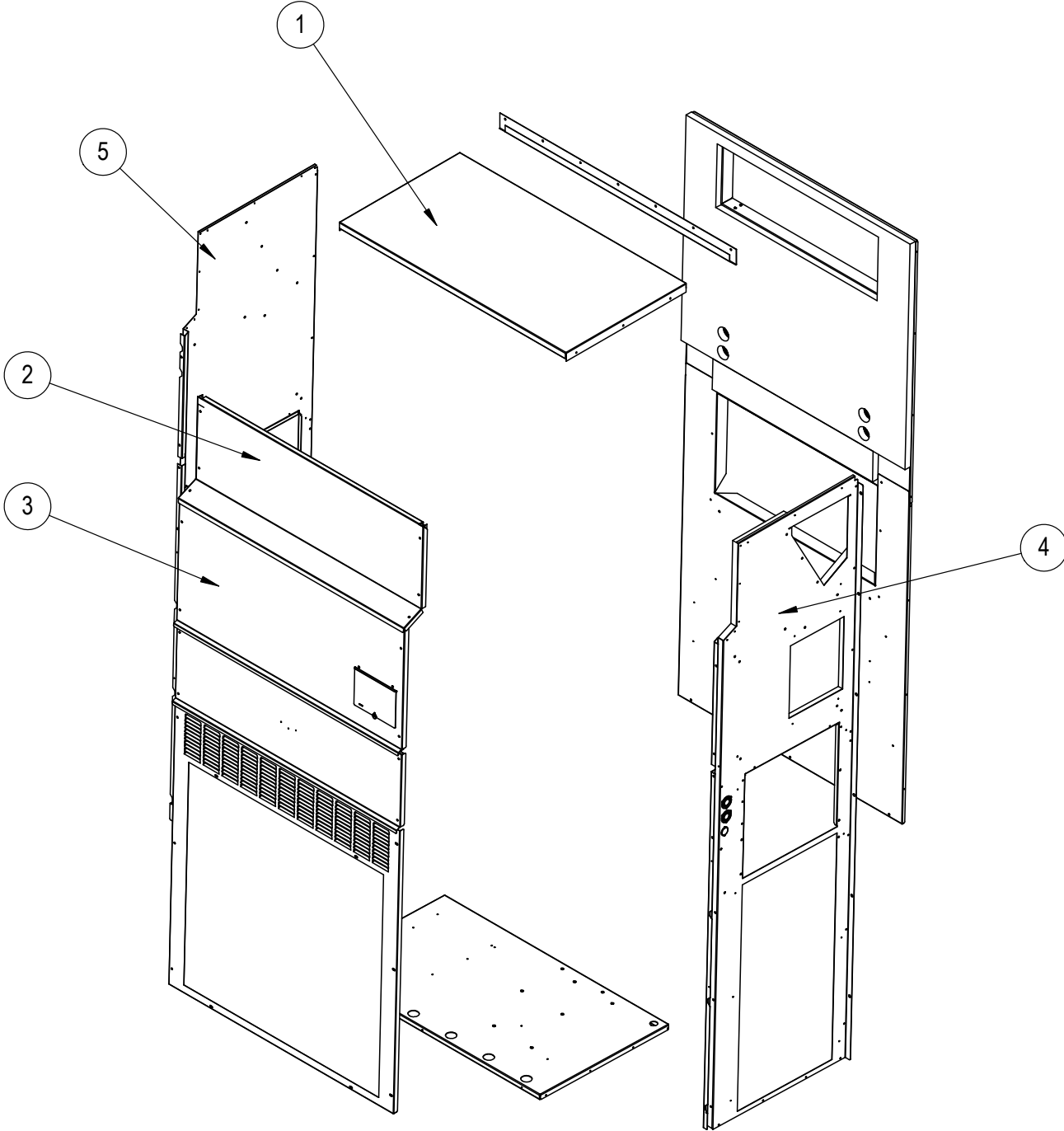
- ① Exterior cabinet parts are manufactured with various paint color options. To ensure the proper paint color is received, include the complete model and serial number of the unit for which cabinet parts are being ordered.
- ② Exterior cabinet parts are manufactured from aluminum Code "A"  
**NOTE:** #24 - Top rain flashing not available in aluminum; order 113-150-4 (Gray).
- ③ Exterior cabinet parts are manufactured from stainless steel Code "S"

X – Standard Component  
O – Optional Component

**Refer to drawing on page 2**

*This page intentionally left blank*

# EXTERNAL PARTS - RECESSED CABINET



SEXP-1088

## EXTERNAL PARTS – RECESSED CABINET

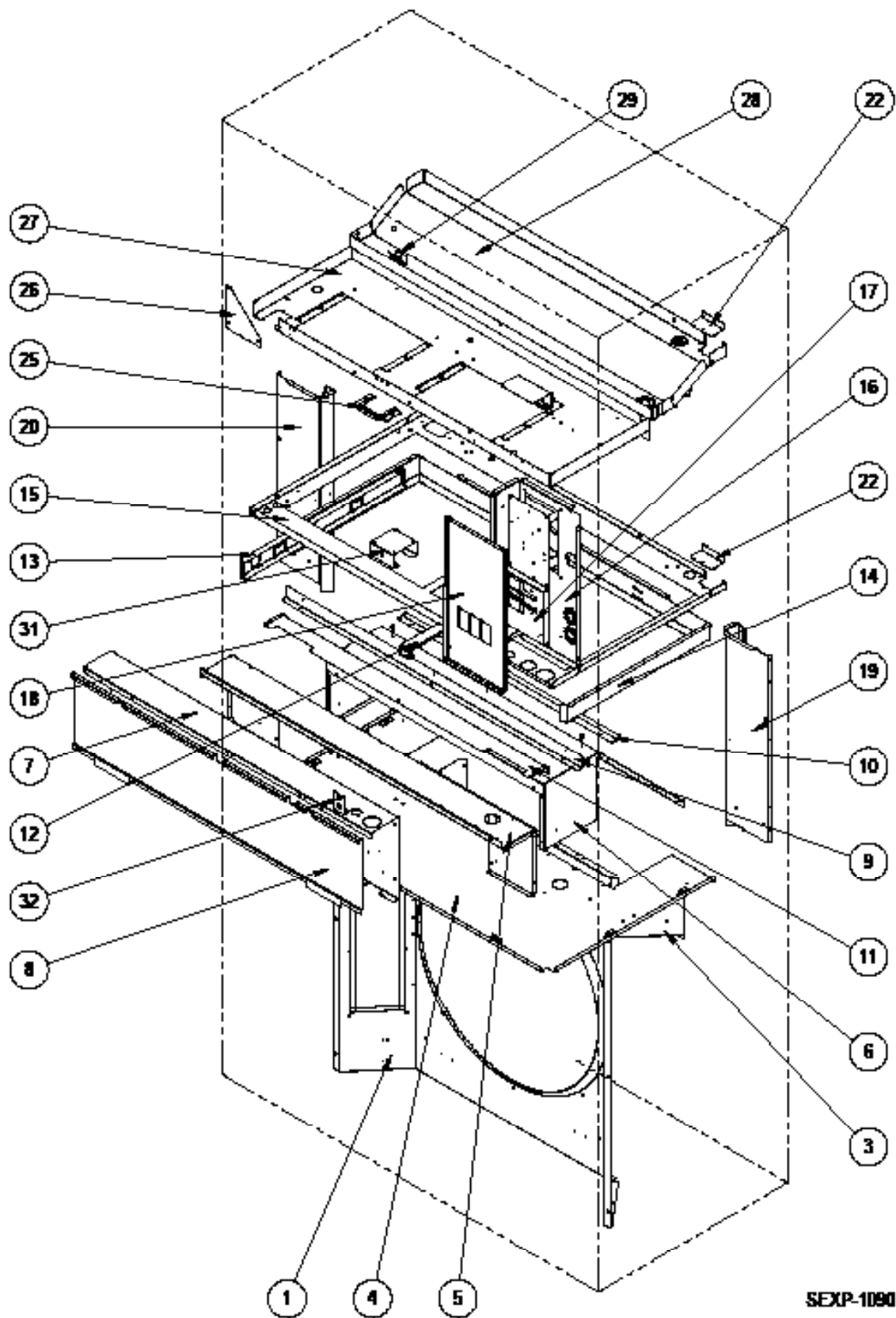
---

| Drawing No. | Part Number    | Description         | C36HY-A, B, C | C42HY-A, B, C | C48HY-A, B, C | C60HY-A, B, C |
|-------------|----------------|---------------------|---------------|---------------|---------------|---------------|
| 1           | 507-413-*BX ①  | Top                 | X             | X             | X             | X             |
| 2           | 515-354-*BX ①  | Upper Front         | X             | X             |               |               |
| 2           | 515-356-*BX ①  | Upper Front         |               |               | X             | X             |
| 3           | 515-355-*BX ①  | Center Front        | X             | X             |               |               |
| 3           | 515-357-*BX ①  | Center Front        |               |               | X             | X             |
| 4           | 501-1142-*BX ① | Right Side Assembly | X             | X             |               |               |
| 4           | 501-1144-*BX ① | Right Side Assembly |               |               | X             | X             |
| 5           | 501-1143-*BX ① | Left Side Assembly  | X             | X             |               |               |
| 5           | 501-1145-*BX ① | Left Side Assembly  |               |               | X             | X             |

- ① Exterior cabinet parts are manufactured with various paint color options. To ensure the proper paint color is received, include the complete model and serial number of the unit for which cabinet parts are being ordered.

**NOTE:** The replacement cabinet parts listed above are specific to the recessed unit C36/42/48/60HY heat pump models. All other replacement cabinet external parts for these models are referenced on pages 2, 3 and 4.

# INTERNAL PARTS - STANDARD & RECESSED



SEXP-1090

## INTERNAL PARTS - STANDARD & RECESSED

| Dwg. No. | Part Number         | Description                               | C36HY-A | C36HY-B | C36HY-C | C42HY-A | C42HY-B | C42HY-C | C48HY-A | C48HY-B | C48HY-C | C60HY-A | C60HY-B | C60HY-C |
|----------|---------------------|---|---------|---------|---------|---------|---------|---------|---------|---------|---------|---------|---------|---------|
| 1        | 921-0120BX          | Fan Shroud - Draw Thru                    | X       | X       | X       | X       | X       | X       |         |         |         |         |         |         |
| 1        | 921-0121BX          | Fan Shroud - Draw Thru                    |         |         |         |         |         |         | X       | X       | X       | X       | X       | X       |
| 1        | 921-0122BX          | Fan Shroud - Blow Thru                    | X       | X       | X       | X       | X       | X       |         |         |         |         |         |         |
| 1        | 921-0123BX          | Fan Shroud - Blow Thru                    |         |         |         |         |         |         | X       | X       | X       | X       | X       | X       |
| 1        | 921-0124BX ①        | Fan Shroud - Draw Thru                    | O       | O       | O       | O       | O       | O       |         |         |         |         |         |         |
| 1        | 921-0125BX ①        | Fan Shroud - Draw Thru                    |         |         |         |         |         |         | O       | O       | O       | O       | O       | O       |
| 1        | 921-0126BX ①        | Fan Shroud - Blow Thru                    | O       | O       | O       | O       | O       | O       |         |         |         |         |         |         |
| 1        | 921-0127BX ①        | Fan Shroud - Blow Thru                    |         |         |         |         |         |         | O       | O       | O       | O       | O       | O       |
| 3        | 121-586BX           | Condenser Partition Insert                | X       | X       | X       | X       | X       | X       | X       | X       | X       | X       | X       | X       |
| 3        | 121-600BX ①         | Condenser Partition Insert                | O       | O       | O       | O       | O       | O       | O       | O       | O       | O       | O       | O       |
| 4        | 121-585BX           | Condenser Partition                       | X       | X       | X       | X       | X       | X       | X       | X       | X       | X       | X       | X       |
| 4        | 121-599BX ①         | Condenser Partition                       | O       | O       | O       | O       | O       | O       | O       | O       | O       | O       | O       | O       |
| 5        | 521-630BX           | Front Exhaust Partition                   | X       | X       | X       | X       | X       | X       | X       | X       | X       | X       | X       | X       |
| 6        | 521-587BX           | Exhaust Partition                         | X       | X       | X       | X       | X       | X       | X       | X       | X       | X       | X       | X       |
| 7        | Control Panel Assy. | See <b>Control Panel</b> on pages 14 – 16 | X       | X       | X       | X       | X       | X       | X       | X       | X       | X       | X       | X       |
| 8        | 133-330BX           | Control Panel Cover (Inner)               | X       | X       | X       | X       | X       | X       | X       | X       | X       | X       | X       | X       |
| 9        | 105-1453BX          | Front Vent Guide Rail                     | X       | X       | X       | X       | X       | X       | X       | X       | X       | X       | X       | X       |
| 10       | 105-1452BX          | Vent Guide Rail                           | X       | X       | X       | X       | X       | X       | X       | X       | X       | X       | X       | X       |
| 11       | 135-409BX           | Field Wire Shield                         | X       | X       | X       | X       | X       | X       | X       | X       | X       | X       | X       | X       |
| 12       | 131-168BX           | Filter Support Bracket                    | X       | X       | X       | X       | X       | X       | X       | X       | X       | X       | X       | X       |
| 13       | 131-170BX           | Filter Slide                              | X       | X       | X       | X       | X       | X       | X       | X       | X       | X       | X       | X       |
| 14       | 131-169BX           | Filter Rack Frame                         | X       | X       | X       | X       | X       | X       | X       | X       | X       | X       | X       | X       |
| 15       | 121-583BX           | Filter Partition                          | X       | X       | X       | X       | X       | X       | X       | X       | X       | X       | X       | X       |
| 16       | 117-412BX           | Upper Control Panel                       | X       | X       | X       | X       | X       | X       | X       | X       | X       | X       | X       | X       |
| 17       | 127-575BX           | Circuit Breaker Base - 230V               | X       | X       |         | X       | X       |         | X       | X       |         | X       | X       |         |
| 17       | 127-585BX           | Circuit Breaker Base - 460V               |         |         | X       |         |         | X       |         |         | X       |         |         | X       |
| 18       | 133-303BX           | Upper Control Panel Cover                 | X       | X       |         | X       | X       |         | X       | X       |         | X       | X       |         |
| 18       | 133-304BX           | Upper Control Panel Cover                 |         |         | X       |         |         | X       |         |         | X       |         |         | X       |
| 19       | 135X393BX           | Right Copper Chase                        | X       | X       | X       | X       | X       | X       | X       | X       | X       | X       | X       | X       |
| 19       | 135X397BX ①         | Right Copper Chase                        | O       | O       | O       | O       | O       | O       | O       | O       | O       | O       | O       | O       |
| 20       | 135Y393BX           | Left Copper Chase                         | X       | X       | X       | X       | X       | X       | X       | X       | X       | X       | X       | X       |
| 20       | 135-398BX ①         | Left Copper Chase                         | O       | O       | O       | O       | O       | O       | O       | O       | O       | O       | O       | O       |
| 22       | 137-920BX           | Copper Fill Plate                         | 2       | 2       | 2       | 2       | 2       | 2       | 2       | 2       | 2       | 2       | 2       | 2       |
| 25       | 113-765BX           | Grommet Retainer Bracket                  | X       | X       | X       | X       | X       | X       | X       | X       | X       | X       | X       | X       |
| 26       | 141-492BX           | Blower Partition Support                  | X       | X       | X       | X       | X       | X       | X       | X       | X       | X       | X       | X       |
| 27       | 121-582BX           | Blower Partition                          | X       | X       | X       | X       | X       | X       | X       | X       | X       | X       | X       | X       |
| 28       | 523-161BX           | Drain Pan Assembly                        | X       | X       | X       | X       | X       | X       | X       | X       | X       | X       | X       | X       |
| 28       | 523-162BX ①②        | Drain Pan Assembly                        | O       | O       | O       | O       | O       | O       | O       | O       | O       | O       | O       | O       |
| 29       | 113-967BX           | TXV Bracket                               | X       | X       | X       | X       | X       | X       | X       | X       | X       | X       | X       | X       |
| 31       | 113-788BX           | Filter Switch Bracket                     | O       | O       | O       | O       | O       | O       | O       | O       | O       | O       | O       | O       |
| 32       | 113-789BX           | Filter Switch Light Bracket               | O       | O       | O       | O       | O       | O       | O       | O       | O       | O       | O       | O       |
| NS       | 113-324BX           | Transformer Mounting Plate                |         |         | X       |         |         | X       |         |         | X       |         |         | X       |
| NS       | 113-381BX           | TXV Bulb Bracket                          | X       | X       | X       | X       | X       | X       | X       | X       | X       | X       | X       | X       |
| NS       | 113-809BX           | Heating Expansion Valve Bracket           | X       | X       | X       | X       | X       | X       | X       | X       | X       | X       | X       | X       |

NS = Not Shown

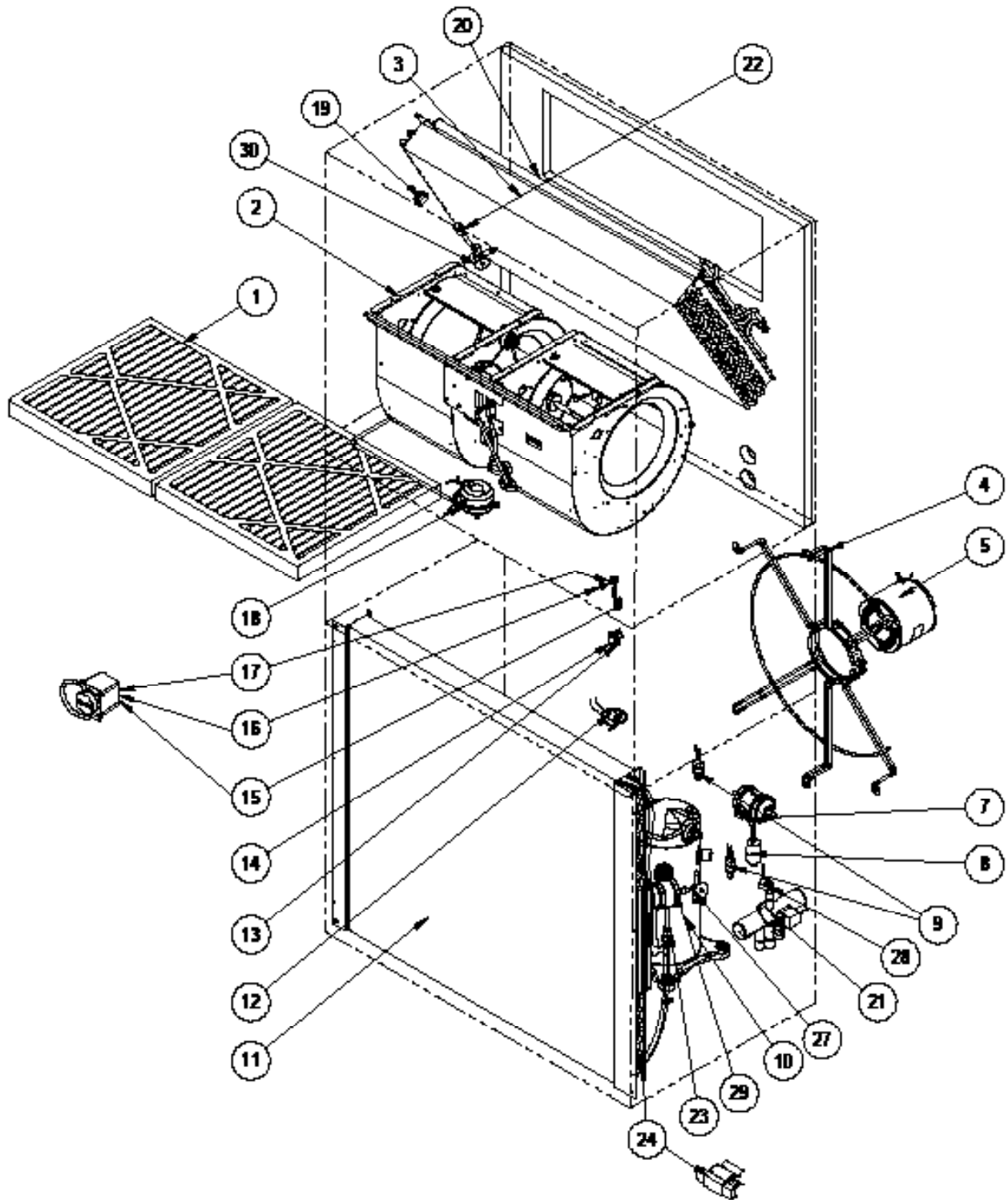
① Exterior cabinet parts are manufactured from stainless steel Code "S"

② For aluminum units, order 523-162 stainless steel drain pan.

X – Standard Component

O – Optional Component

# FUNCTIONAL COMPONENTS – STANDARD & RECESSED



SEXP-1069

This drawing to be used for reference for pages 11 and 12

## FUNCTIONAL COMPONENTS – STANDARD & RECESSED

| Dwg. No. | Part Number     | Description                                     | C36HY-A | C36HY-B | C36HY-C | C42HY-A | C42HY-B | C42HY-C | C48HY-A | C48HY-B | C48HY-C | C60HY-A | C60HY-B | C60HY-C |
|----------|-----------------|---|---------|---------|---------|---------|---------|---------|---------|---------|---------|---------|---------|---------|
| 1        | 7004-012        | Air Filter 1" Throw-Away (20 x 20 x 1)          | 2       | 2       | 2       | 2       | 2       | 2       | 2       | 2       | 2       | 2       | 2       | 2       |
| 1        | 7003-085 ①      | Air Filter 1" Washable (20 x 20 x 1)            | 2       | 2       | 2       | 2       | 2       | 2       | 2       | 2       | 2       | 2       | 2       | 2       |
| 1        | 7004-052 ①      | Air Filter 2" Merv 8 (20 x 20 x 2)              | 2       | 2       | 2       | 2       | 2       | 2       | 2       | 2       | 2       | 2       | 2       | 2       |
| 1        | 7004-060 ①      | Air Filter 2" Merv 11 (20 x 20 x 2)             | 2       | 2       | 2       | 2       | 2       | 2       | 2       | 2       | 2       | 2       | 2       | 2       |
| 1        | 7004-063 ①      | Air Filter 2" Merv 13 (20 x 20 x 2)             | 2       | 2       | 2       | 2       | 2       | 2       | 2       | 2       | 2       | 2       | 2       | 2       |
| 2        | 900-398-0237BX  | Blower Assembly                                 | X       | X       | X       |         |         |         |         |         |         |         |         |         |
| 2        | 900-398-0238BX  | Blower Assembly                                 |         |         |         | X       | X       | X       |         |         |         |         |         |         |
| 2        | 900-397-0239BX  | Blower Assembly                                 |         |         |         |         |         |         | X       | X       | X       |         |         |         |
| 2        | 900-397-0240BX  | Blower Assembly                                 |         |         |         |         |         |         |         |         |         | X       | X       | X       |
| 3        | 917-0405BX      | Indoor Coil w/Distributor Assy.                 | X       | X       | X       |         |         |         |         |         |         |         |         |         |
| 3        | 917-0406BX      | Indoor Coil - Coated w/Distributor Assy.        | O       | O       | O       |         |         |         |         |         |         |         |         |         |
| 3        | 917-0409BX      | Indoor Coil w/Distributor Assy.                 |         |         |         | X       | X       | X       |         |         |         |         |         |         |
| 3        | 917-0410BX      | Indoor Coil - Coated w/Distributor Assy.        |         |         |         | O       | O       | O       |         |         |         |         |         |         |
| 3        | 917-0376BX      | Indoor Coil w/Distributor Assy.                 |         |         |         |         |         |         | X       | X       | X       | X       | X       | X       |
| 3        | 917-0377BX      | Indoor Coil - Coated w/Distributor Assy.        |         |         |         |         |         |         | O       | O       | O       | O       | O       | O       |
| 4        | 8200-049BX      | Fan Motor Mount                                 | X       | X       | X       | X       | X       | X       | X       | X       | X       | X       | X       | X       |
| 4        | 8200-052BX ②    | Fan Motor Mount - Stainless Steel               | O       | O       | O       | O       | O       | O       | O       | O       | O       | O       | O       | O       |
| 5        | 8105-078BX      | Condenser Motor - 230V                          | X       | X       |         | X       | X       |         | X       | X       |         |         |         |         |
| 5        | 8105-071BX      | Condenser Motor - 460V                          |         |         | X       |         |         | X       |         |         | X       |         |         |         |
| 5        | 8106-053-0241BX | Programmed Condenser Motor & Control (230/208V) |         |         |         |         |         |         |         |         |         | X       | X       |         |
| 5        | 8106-081-0253BX | Programmed Condenser Motor & Control (460V)     |         |         |         |         |         |         |         |         |         |         |         | X       |
| 6        | 5151-054BX      | Fan Blade - Draw Thru                           | X       | X       | X       | X       | X       | X       | X       | X       | X       | X       | X       | X       |
| 6        | 5151C054BX      | Fan Blade - Draw Thru - Coated                  | O       | O       | O       | O       | O       | O       | O       | O       | O       | O       | O       | O       |
| 6        | 5151-060BX      | Fan Blade - Blow Thru                           | X       | X       | X       | X       | X       | X       | X       | X       | X       | X       | X       | X       |
| 6        | 5151C060BX      | Fan Blade - Blow Thru - Coated                  | O       | O       | O       | O       | O       | O       | O       | O       | O       | O       | O       | O       |
| 7        | 5201-020BX      | H/P Liquid Filter Drier                         | X       | X       | X       | X       | X       | X       | X       | X       | X       | X       | X       | X       |
| 8        | CMH-40          | Low Ambient Control (LAC) Kit                   | O       | O       | O       | O       | O       | O       | O       | O       | O       | O       | O       | O       |
| 9        | 8406-142BX      | High Pressure Switch                            | X       | X       | X       | X       | X       | X       | X       | X       | X       | X       | X       | X       |
| 9        | 8406-135BX      | Low Pressure Switch                             | X       | X       | X       | X       | X       | X       | X       | X       | X       | X       | X       | X       |
| 10       | 8000-440BX      | Compressor ZPS30K6E-PFV-130                     | X       |         |         |         |         |         |         |         |         |         |         |         |
| 10       | 8000-442BX      | Compressor ZPS30K6E-TF5-130                     |         | X       |         |         |         |         |         |         |         |         |         |         |
| 10       | 8000-452BX      | Compressor ZPS30K6E-TFD-130                     |         |         | X       |         |         |         |         |         |         |         |         |         |
| 10       | 8000-391BX      | Compressor ZPS35K5E-PFV-130                     |         |         |         | X       |         |         |         |         |         |         |         |         |
| 10       | 8000-392BX      | Compressor ZPS35K5E-TF5-130                     |         |         |         |         | X       |         |         |         |         |         |         |         |
| 10       | 8000-393BX      | Compressor ZPS35K5E-TFD-130                     |         |         |         |         |         | X       |         |         |         |         |         |         |
| 10       | 8000-453BX      | Compressor ZPS40K6E-PFV-130                     |         |         |         |         |         |         | X       |         |         |         |         |         |
| 10       | 8000-454BX      | Compressor ZPS40K6E-TF5-130                     |         |         |         |         |         |         |         | X       |         |         |         |         |
| 10       | 8000-455BX      | Compressor ZPS40K6E-TFD-130                     |         |         |         |         |         |         |         |         | X       |         |         |         |
| 10       | 8000-449BX      | Compressor ZPS51K6E-PFV-130                     |         |         |         |         |         |         |         |         |         | X       |         |         |
| 10       | 8000-450BX      | Compressor ZPS51K6E-TF5-130                     |         |         |         |         |         |         |         |         |         |         | X       |         |
| 10       | 8000-451BX      | Compressor ZPS51K6E-TFD-130                     |         |         |         |         |         |         |         |         |         |         |         | X       |
| 11       | 917-0413BX      | Outdoor Coil (Includes Distributor)             | X       | X       | X       |         |         |         |         |         |         |         |         |         |
| 11       | 917-0414BX      | Outdoor Coil - Coated (Includes Distributor)    | O       | O       | O       |         |         |         |         |         |         |         |         |         |
| 11       | 917-0415BX      | Outdoor Coil (Includes Distributor)             |         |         |         | X       | X       | X       |         |         |         |         |         |         |
| 11       | 917-0416BX      | Outdoor Coil - Coated (Includes Distributor)    |         |         |         | O       | O       | O       |         |         |         |         |         |         |
| 11       | 917-0417BX      | Outdoor Coil (Includes Distributor)             |         |         |         |         |         |         | X       | X       | X       | X       | X       | X       |
| 11       | 917-0418BX      | Outdoor Coil - Coated (Includes Distributor)    |         |         |         |         |         |         | O       | O       | O       | O       | O       | O       |
| 13       | 3000-1638BX     | Wire Assembly - Dirty Filter Option             | O       | O       | O       | O       | O       | O       | O       | O       | O       | O       | O       | O       |
| 14       | 8611-094BX      | Red Indicator Light - 24VAC                     | O       | O       | O       | O       | O       | O       | O       | O       | O       | O       | O       | O       |
| 15       | 1171-023        | 1/4 Turn Receptacle                             | X       | X       | X       | X       | X       | X       | X       | X       | X       | X       | X       | X       |
| 16       | 1171-022        | 1/4 Turn Fastener                               | X       | X       | X       | X       | X       | X       | X       | X       | X       | X       | X       | X       |

Continued on page 12

① – Optional on these models

② – Used with stainless steel cabinet option

X – Standard Component

O – Optional Component

# FUNCTIONAL COMPONENTS – STANDARD & RECESSED

| Dwg. No.                      | Part Number | Description                                 | C36HY-A | C36HY-B | C36HY-C | C42HY-A | C42HY-B | C42HY-C | C48HY-A | C48HY-B | C48HY-C | C60HY-A | C60HY-B | C60HY-C |
|-------------------------------|-------------|---|---------|---------|---------|---------|---------|---------|---------|---------|---------|---------|---------|---------|
| <i>Continued from page 11</i> |             |   |         |         |         |         |         |         |         |         |         |         |         |         |
| 17                            | 1171-024    | 1/4 Turn Retainer                           | X       | X       | X       | X       | X       | X       | X       | X       | X       | X       | X       | X       |
| 18                            | 8301-057    | Filter Pressure Switch                      | O       | O       | O       | O       | O       | O       | O       | O       | O       | O       | O       | O       |
| 19                            | CMC-29      | Freeze Protection Thermostat                | O       | O       | O       | O       | O       | O       | O       | O       | O       | O       | O       | O       |
| 21                            | 5650-040BX  | Reversing Valve                             | X       | X       | X       | X       | X       | X       | X       | X       | X       | X       | X       | X       |
| 22                            | 800-0461BX  | Distributor Assembly - Indoor Coil          | X       | X       | X       |         |         |         |         |         |         |         |         |         |
| 22                            | 800-0424BX  | Distributor Assembly - Indoor Coil          |         |         |         | X       | X       | X       |         |         |         |         |         |         |
| 22                            | 800-0455BX  | Distributor Assembly - Indoor Coil          |         |         |         |         |         |         | X       | X       | X       | X       | X       | X       |
| 23                            | 800-0424BX  | Distributor Assembly - Outdoor Coil         | X       | X       | X       |         |         |         |         |         |         |         |         |         |
| 23                            | 800-0467BX  | Distributor Assembly - Outdoor Coil         |         |         |         | X       | X       | X       |         |         |         |         |         |         |
| 23                            | 800-0455BX  | Distributor Assembly - Outdoor Coil         |         |         |         |         |         |         | X       | X       | X       | X       | X       | X       |
| 24                            | 8620-225    | Defrost Thermistor Sensor                   | X       | X       | X       | X       | X       | X       | X       | X       | X       | X       | X       | X       |
| 27                            | 5651-210BX  | Heating Expansion Valve                     | X       | X       | X       |         |         |         |         |         |         |         |         |         |
| 27                            | 5651-225BX  | Heating Expansion Valve                     |         |         |         | X       | X       | X       |         |         |         |         |         |         |
| 27                            | 5651-211BX  | Heating Expansion Valve                     |         |         |         |         |         |         | X       | X       | X       | X       | X       | X       |
| 28                            | 8408-039BX  | Discharge Line Thermostat                   | X       | X       | X       | X       | X       | X       | X       | X       | X       | X       | X       | X       |
| 29                            | 5220-013BX  | Pulsation Dampener/Muffler                  | X       | X       | X       | X       | X       | X       | X       | X       | X       | X       | X       | X       |
| 30                            | 5651-210BX  | Cooling Expansion Valve                     | X       | X       | X       |         |         |         |         |         |         |         |         |         |
| 30                            | 5651-225BX  | Cooling Expansion Valve                     |         |         |         | X       | X       | X       |         |         |         |         |         |         |
| 30                            | 5651-252BX  | Cooling Expansion Valve                     |         |         |         |         |         |         | X       | X       | X       | X       | X       | X       |
| NS                            | CMC-33      | Dirty Filter Switch Kit = Item #'s 13,14,18 | O       | O       | O       | O       | O       | O       | O       | O       | O       | O       | O       | O       |
| NS                            | 5650-042BX  | Rev. Valve Solenoid, Red Casing (Ranco)     | X       | X       | X       | X       | X       | X       | X       | X       | X       | X       | X       | X       |
| NS                            | 5650-046BX  | Rev. Valve Solenoid, Black Casing (San Hua) | X       | X       | X       | X       | X       | X       | X       | X       | X       | X       | X       | X       |
| NS                            | 5451-024    | Tubing Isolation Grommet                    | 2       | 2       | 2       | 4       | 4       | 4       | 2       | 2       | 2       | 4       | 4       | 4       |
| NS                            | 6031-009    | Coremax Valve Core                          | 2       | 2       | 2       | 2       | 2       | 2       | 2       | 2       | 2       | 2       | 2       | 2       |
| NS                            | 1171-028    | Control Panel Door Clip                     | 4       | 4       | 4       | 4       | 4       | 4       | 4       | 4       | 4       | 4       | 4       | 4       |
| NS                            | 1171-057    | Control Panel Door Screw                    | 4       | 4       | 4       | 4       | 4       | 4       | 4       | 4       | 4       | 4       | 4       | 4       |
| NS                            | 1171-027    | Control Panel Door Screw Retainer           | 4       | 4       | 4       | 4       | 4       | 4       | 4       | 4       | 4       | 4       | 4       | 4       |
| NS                            | 5650-054    | Molded Plug for Rev/Dehum Valves            | X       | X       | X       | X       | X       | X       | X       | X       | X       | X       | X       | X       |
| NS                            | 910-2188BX  | 460V Transformer Assembly                   |         |         | X       |         |         | X       |         |         | X       |         |         |         |
| NS                            | 910-2220BX  | 460V Transformer Assembly                   |         |         |         |         |         |         |         |         |         |         |         | X       |

NS = Not Shown

X – Standard Component  
O – Optional Component

Refer to drawing on page 10

*This page intentionally left blank*



## CONTROL PANEL - STANDARD & RECESSED

| Dwg. No. | Part Number   | Description   | C36HY-A | C36HY-B | C36HY-C | C42HY-A | C42HY-B | C42HY-C | C48HY-A | C48HY-B | C48HY-C | C60HY-A | C60HY-B | C60HY-C |
|----------|---------------|---|---------|---------|---------|---------|---------|---------|---------|---------|---------|---------|---------|---------|
| 1        | 117-452BX     | Control Panel   | X       | X       | X       | X       | X       | X       | X       | X       | X       | X       | X       | X       |
| 2        | 910-2061BX    | Complete Low Voltage Box Assembly<br>(Sheet metal, Terminal Strip & Wire Harness) | X       | X       | X       | X       | X       | X       | X       | X       | X       | X       | X       | X       |
| 3        | 135-394BX     | Wire Shield   | X       | X       | X       | X       | X       | X       | X       | X       | X       | X       | X       | X       |
| 4        | 8611-244-3208 | Cable Duct - 32.5"  | X       | X       | X       | X       | X       | X       | X       | X       | X       | X       | X       | X       |
| 6        | 8611-244-0608 | Cable Duct - 6.5"   | 2       | 2       | 2       | 2       | 2       | 2       | 2       | 2       | 2       | 2       | 2       | 2       |
| 8        | 8607-063BX    | Low Voltage Terminal Strip - 18 Terminal  | X       | X       | X       | X       | X       | X       | X       | X       | X       | X       | X       | X       |
| 9        | 3000-1524BX   | Vent Jumper Plug (used when no vent option)                                       | X       | X       | X       | X       | X       | X       | X       | X       | X       | X       | X       | X       |
| 10       | 8201-130BX    | Alarm Relay (Kit = CMC-35)  | 0       | 0       | 0       | 0       | 0       | 0       | 0       | 0       | 0       | 0       | 0       | 0       |
| 12       | CMH-41        | OD T-Stat/LAC Relay Kit   | 0       | 0       | 0       | 0       | 0       | 0       | 0       | 0       | 0       | 0       | 0       | 0       |
| 13       | 8201-159BX    | Dirty Filter Relay (Kit = CMC-33)   | 0       | 0       | 0       | 0       | 0       | 0       | 0       | 0       | 0       | 0       | 0       | 0       |
| 14       | 8408-028BX    | Outdoor Thermostat (ODT Kit = CMH-36)   | 0       | 0       | 0       | 0       | 0       | 0       | 0       | 0       | 0       | 0       | 0       | 0       |
| 17       | 8620-223      | Defrost Logic Control Board w/Sensor  | X       | X       | X       | X       | X       | X       | X       | X       | X       | X       | X       | X       |
| 18       | 8407-050BX    | Transformer 480-24VAC 75VA  |         |         | X       |         |         | X       |         |         | X       |         |         | X       |
| 18       | 8407-065BX    | Transformer 208/240-24VAC 75VA  | X       | X       |         | X       | X       |         | X       | X       |         | X       | X       |         |
| 19       | 8201-174BX    | 3 Phase Line Monitor 50/60Hz  |         | X       | X       |         | X       | X       |         | X       | X       |         | X       | X       |
| 20       | 8552-004BX    | Capacitor 7-1/2MFD 370V 1-1/4" O  |         |         | X       |         |         | X       |         |         | X       |         |         |         |
| 20       | 8552-005BX    | Capacitor 10MFD 370V 1-1/4" O   |         | X       |         |         | X       |         |         | X       |         |         |         |         |
| 20       | 8552-057BX    | Capacitor 35/10 MFD 440V 2.5" R   |         |         |         |         |         |         | X       |         |         |         |         |         |
| 20       | 8552-079BX    | Capacitor 45/10 MFD 370V 2.5" R   | X       |         |         | X       |         |         |         |         |         |         |         |         |
| 20       | 8552-096BX    | Capacitor 40MFD 440V 2" R   |         |         |         |         |         |         |         |         |         | X       |         |         |
| 21       | 8550-003BX    | Capacitor Bracket 1-1/4" Oval   |         | X       | X       |         | X       | X       |         | X       | X       |         |         |         |
| 21       | 8550-007BX    | Capacitor Bracket 2" Round  |         |         |         |         |         |         |         |         |         | X       |         |         |
| 21       | 8550-008BX    | Capacitor Bracket 2-1/2" Round  | X       |         |         | X       |         |         | X       |         |         |         |         |         |
| 23       | 8401-035BX    | Contactors 3-Pole 25 Amp  |         | X       | X       |         | X       | X       |         | X       | X       |         | X       | X       |
| 23       | 8401-034BX    | Contactors 2-Pole 40 Amp  | X       |         |         | X       |         |         | X       |         |         | X       |         |         |
| 24       | 8201-032BX    | Outdoor Fan Relay   |         |         | X       |         |         | X       |         |         | X       |         |         |         |
| 24       | 8201-130BX    | Outdoor Fan Relay (located where 3-phase monitor<br>or capacitor device shown)    |         |         |         |         |         |         |         |         |         | X       | X       | X       |
| 25       | 8611-144BX    | End Clamp for DIN Rail  |         |         | X       |         |         | X       |         |         | X       |         |         | X       |
| 26       | 8607-017BX    | Terminal Block 240V 2 Terminal  |         |         | X       |         |         | X       |         |         | X       |         |         | X       |
| 27       | 8614-058BX    | 2-Pole Enclosed Fuse Holder   |         |         | X       |         |         | X       |         |         | X       |         |         | X       |
| NS       | 8615-037BX    | Circuit Breaker 30A 2 Pole ①  | 0       |         |         |         |         |         |         |         |         |         |         |         |
| NS       | 8615-038BX    | Circuit Breaker 35A 2 Pole ①  |         |         |         | 0       |         |         |         | 0       |         |         |         |         |
| NS       | 8615-055BX    | Circuit Breaker 40A 2 Pole ①  |         |         |         |         |         |         |         | 0       |         |         |         |         |
| NS       | 8615-039BX    | Circuit Breaker 45A 2 Pole ①  |         |         |         |         |         |         |         |         |         | 0       |         |         |
| NS       | 8615-051BX    | Circuit Breaker 25A 3 Pole ①  |         | 0       |         |         |         |         |         |         |         |         |         |         |
| NS       | 8615-052BX    | Circuit Breaker 30A 3 Pole ①  |         |         |         |         | 0       |         |         | 0       |         |         |         |         |
| NS       | 8615-043BX    | Circuit Breaker 40A 3 Pole ①  |         |         |         |         |         |         |         |         |         |         | 0       |         |
| NS       | 8615-095BX    | Toggle Disconnect   |         |         | 0       |         |         | 0       |         |         | 0       |         |         | 0       |
| NS       | 8615-096BX    | Disconnect Cover  |         |         | 0       |         |         | 0       |         |         | 0       |         |         | 0       |

Continued on page 16

NS = Not Shown

X – Standard Component

① Circuit breakers listed are for units without electric heat, "0Z" models.

0 – Optional Component

See heater replacement parts manual for units with electric heat.

# CONTROL PANEL – STANDARD & RECESSED

| Dwg. No.                      | Part Number | Description                                   | C36HY-A | C36HY-B | C36HY-C | C42HY-A | C42HY-B | C42HY-C | C48HY-A | C48HY-B | C48HY-C | C60HY-A | C60HY-B | C60HY-C |
|-------------------------------|-------------|---|---------|---------|---------|---------|---------|---------|---------|---------|---------|---------|---------|---------|
| <i>Continued from page 15</i> |             |   |         |         |         |         |         |         |         |         |         |         |         |         |
| NS                            | 4096-185    | Wiring Diagram                                | X       |         |         | X       |         |         | X       |         |         |         |         |         |
| NS                            | 4096-186    | Wiring Diagram                                |         |         |         |         |         |         |         |         |         | X       |         |         |
| NS                            | 4096-285    | Wiring Diagram                                |         | X       |         |         | X       |         |         | X       |         |         |         |         |
| NS                            | 4096-286    | Wiring Diagram                                |         |         |         |         |         |         |         |         |         |         | X       |         |
| NS                            | 4096-385    | Wiring Diagram                                |         |         | X       |         |         | X       |         |         | X       |         |         |         |
| NS                            | 4096-386    | Wiring Diagram                                |         |         |         |         |         |         |         |         |         |         |         | X       |
| NS                            | 3000-1706BX | Blower Power Plug                             | X       | X       | X       | X       | X       | X       | X       | X       | X       | X       | X       | X       |
| NS                            | 3000-1732BX | Blower Speed Plug                             | X       | X       | X       | X       | X       | X       | X       | X       | X       | X       | X       | X       |
| NS                            | 3000-1222BX | Compressor Plug/Harness                       | X       |         |         | X       |         |         | X       |         |         | X       |         |         |
| NS                            | 3000-1230BX | Compressor Plug/Harness                       |         | X       | X       |         | X       | X       |         | X       | X       |         | X       | X       |
| NS                            | 3000-1223BX | Compressor Plug/Harness - Stage 2 Plug        | X       | X       | X       | X       | X       | X       | X       | X       | X       | X       | X       | X       |
| NS                            | 3003-116BX  | Control Panel Wire Harness                    | X       |         |         | X       |         |         | X       |         |         |         |         |         |
| NS                            | 3003-117BX  | Control Panel Wire Harness                    |         | X       |         |         | X       |         |         | X       |         |         |         |         |
| NS                            | 3003-118BX  | Control Panel Wire Harness                    |         |         | X       |         |         | X       |         |         | X       |         |         |         |
| NS                            | 3003-119BX  | Control Panel Wire Harness                    |         |         |         |         |         |         |         |         |         | X       |         |         |
| NS                            | 3003-120BX  | Control Panel Wire Harness                    |         |         |         |         |         |         |         |         |         |         | X       | X       |
| NS                            | 8551-004BX  | Start Device (PTCR) (Kit = CMC-32)            | O       |         |         | O       |         |         | O       |         |         | O       |         |         |
| NS                            | 3000-1693BX | Low Voltage Terminal Block Wire Harness       | X       | X       | X       | X       | X       | X       | X       | X       | X       | X       | X       | X       |
| NS                            | 8614-046BX  | 5A Class CC Fuse - (used in with Dwg. No. 27) |         |         | 2       |         |         | 2       |         |         | 2       |         |         |         |
| NS                            | 8614-042BX  | 7A Class CC Fuse - (used in with Dwg. No. 27) |         |         |         |         |         |         |         |         |         |         |         | 2       |

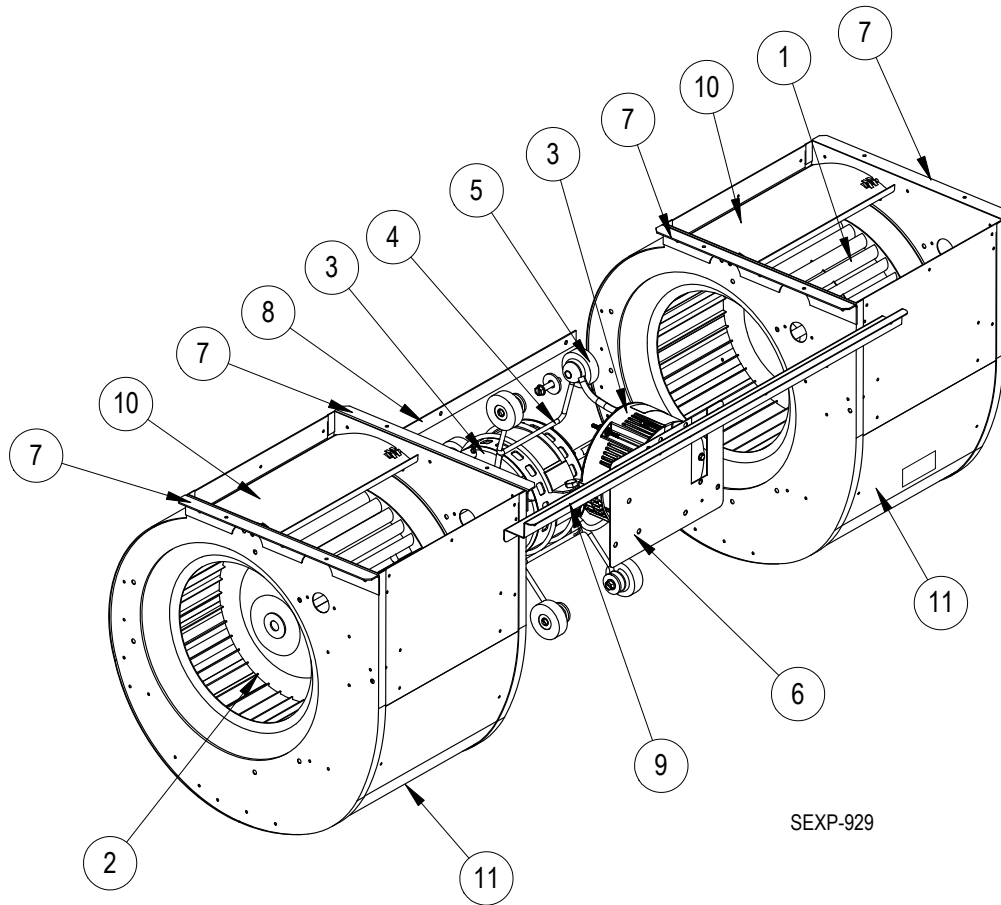
NS = Not Shown

X – Standard Component

O – Optional Component

Refer to drawing on page 14

# BLOWER ASSEMBLY



SEXP-929

| Dwg No. | Part Number     | Description                                  | 900-398-0237BX | 900-398-0238BX | 900-397-0239BX | 900-397-0240BX |
|---------|-----------------|--|----------------|----------------|----------------|----------------|
| 1       | 5152-011BX      | 10 Inch Wheel (CW)                           | X              | X              | X              | X              |
| 2       | 5152-012BX      | 10 Inch Wheel (CCW)                          | X              | X              | X              | X              |
| 3       | 8106-073-0237BX | Programmed Blower Motor & Control (230/208V) | X              |                |                |                |
| 3       | 8106-073-0238BX | Programmed Blower Motor & Control (230/208V) |                | X              |                |                |
| 3       | 8107-032-0239BX | Programmed Blower Motor & Control (230/208V) |                |                | X              |                |
| 3       | 8107-032-0240BX | Programmed Blower Motor & Control (230/208V) |                |                |                | X              |
| 4       | 8200-040BX      | Motor Mount                                  | X              | X              | X              | X              |
| 5       | 5451-011        | Grommets                                     | 6              | 6              | 6              | 6              |
| 6       | 112-775BX       | Motor Control Bracket                        | X              | X              | X              | X              |
| 7       | 105-880BX       | Side Angle                                   | 4              | 4              | 4              | 4              |
| 8       | 105-881BX       | Back Brace                                   | X              | X              | X              | X              |
| 9       | 103-541BX       | Front Mounting Offset                        | X              | X              | X              | X              |
| 10      | 144-166BX       | Diffuser                                     | 2              | 2              | 2              | 2              |
| 11      | 151-101BX       | Blower Housing                               | 2              | 2              | 2              | 2              |