

REPLACEMENT PARTS MANUAL

Wall Mount Heat Pump

Models:

C36HF-A	C42HF-A	C48HF-A	C60HF-A
C36HF-B	C42HF-B	C48HF-B	C60HF-B
C36HF-C	C42HF-C	C48HF-C	C60HF-C
C36HFDA	C42HFDA	C48HFDA	C60HFDA
C36HFDB	C42HFDB	C48HFDB	C60HFDB
C36HFDC	C42HFDC	C48HFDC	C60HFDC

Contents

Description	Page	Description	Page
Wall Mount Heat Pump Nomenclature	2	Control Panel – 460V 3PH	
External Parts – Standard & Dehum		♦ Layout View	24
♦ Exploded View	4	♦ Usage List	25
♦ Usage List	5	♦ Usage List	26
♦ Usage List	6	EEV Controller Assembly	
External Parts – Recessed Cabinet		♦ Exploded View	27
♦ Exploded View	8	♦ Usage List	27
♦ Usage List	9	Blower Assembly	
Internal Parts – Standard & Dehum		♦ Exploded View	28
♦ Exploded View	10	♦ Usage List	28
♦ Usage List	11		
♦ Usage List	12		
Functional Components – Standard & Dehum			
♦ Exploded View	14		
♦ Usage List	15		
♦ Usage List	16		
♦ Usage List	17		
♦ Usage List	18		
Control Panel – 230V 1PH & 230V 3PH			
♦ Layout View	20		
♦ Usage List	21		
♦ Usage List	22		

General Notes

- Revised and/or additional pages may be issued from time to time.
- A complete and current manual consists of pages shown in the following contents section.

Important

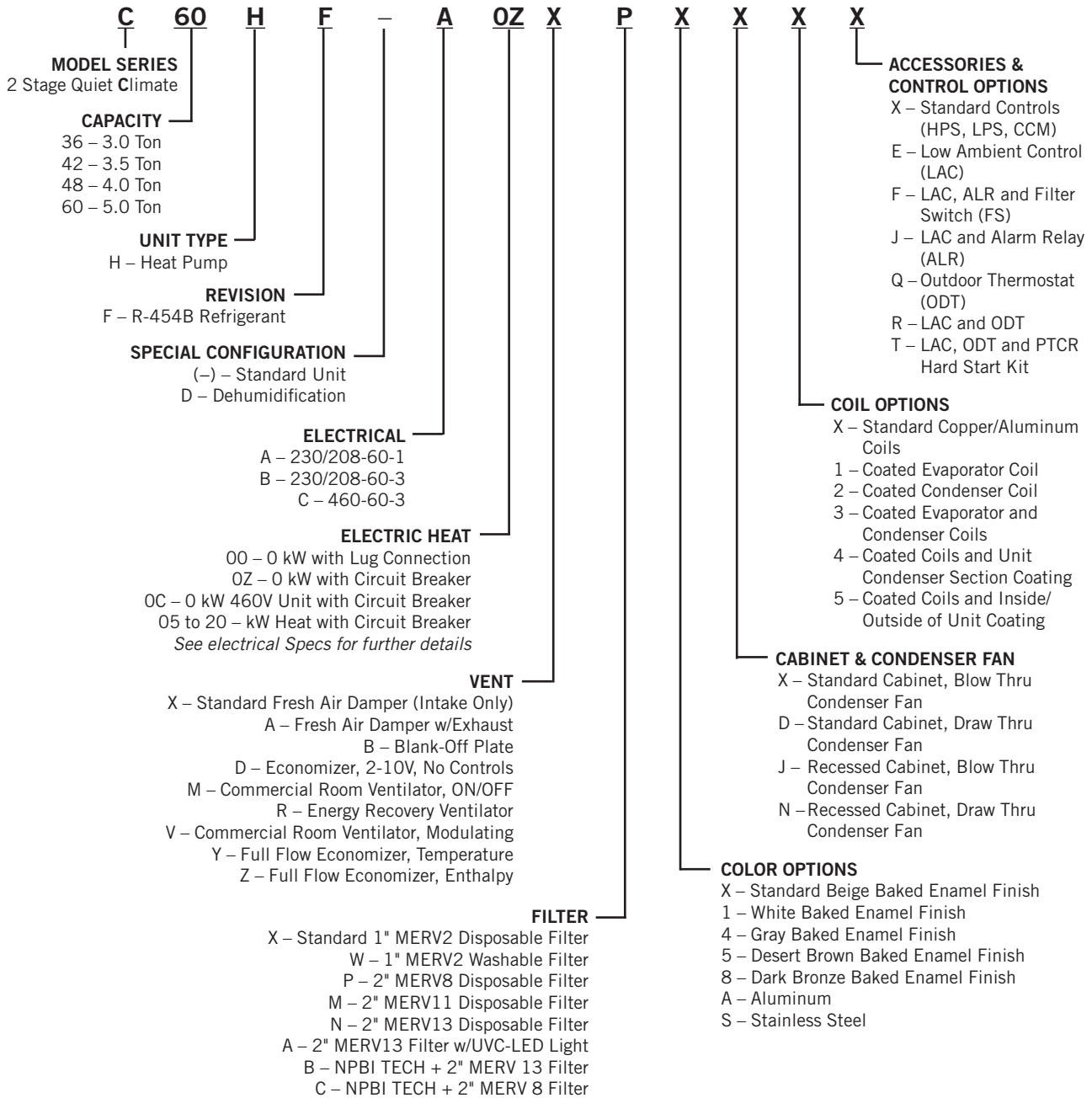
- Contact the installing and/or local Bard distributor for all parts requirements. Make sure to have the complete model and serial number available from the unit rating plates.



Bard Manufacturing Company, Inc.
Bryan, Ohio 43506
www.bardhvac.com

Manual: 2110-1587
Supersedes: **NEW**
Date: 11-12-24

WALL MOUNT HEAT PUMP MODEL NOMENCLATURE

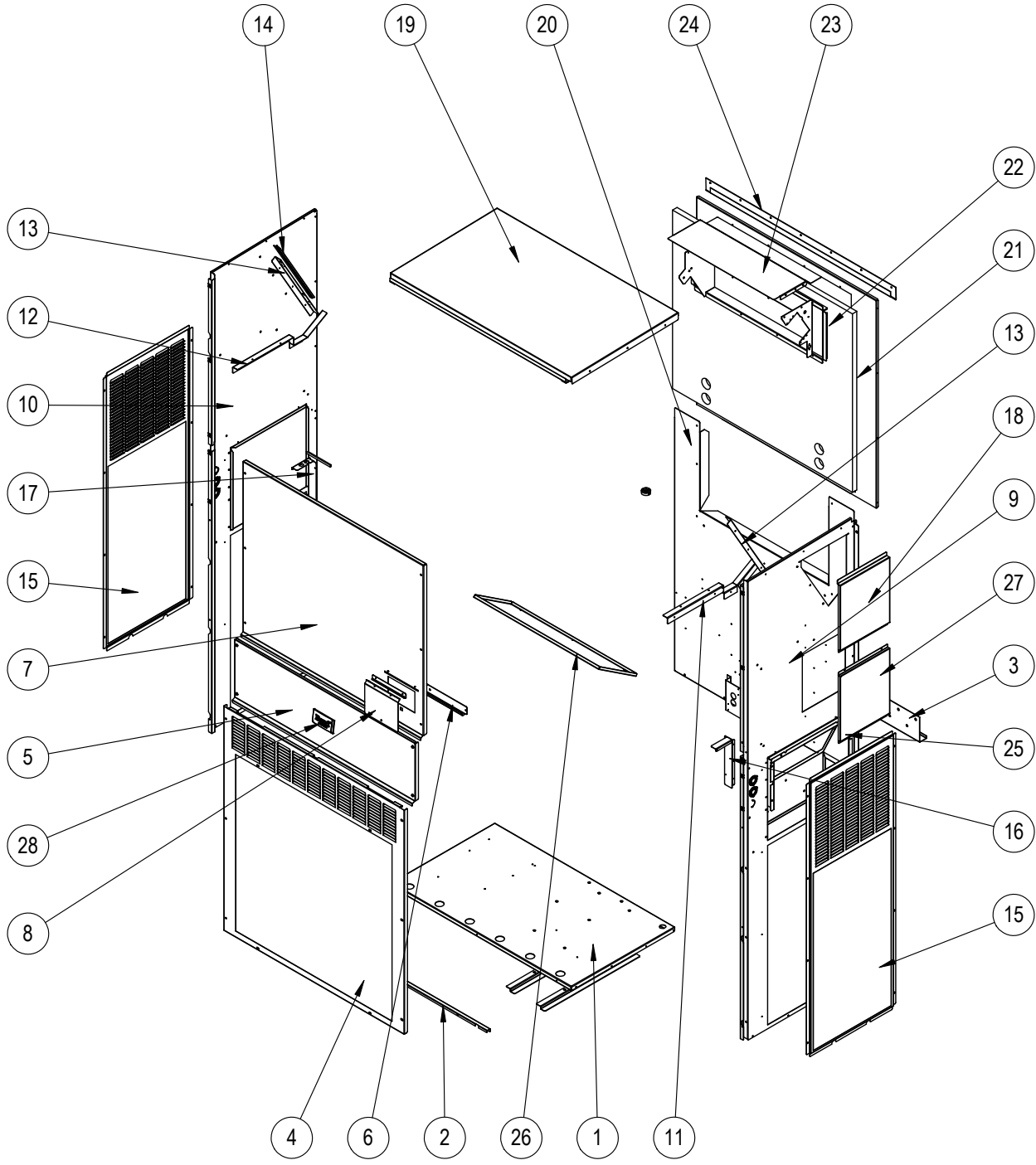


NOMENCLATURE NOTES:

- C36, C42, C48 and C60 models have the unit control panel located in the front of the unit.
- Accessories and control options may not be available for all models. See Specifications Sheet S3660 for further details.
- All units have an external data tag with the model and serial number on the left side of the unit. A secondary data tag with the model and serial number is located inside the control panel area on or near the low voltage terminal box.
- Aluminum and stainless steel cabinet finish not available in units with recessed cabinet top.
- Only "X" Cabinet and Condenser Fan option (Standard Cabinet, Blow Thru Condenser Fan) is available with dehum units.

This page intentionally left blank

EXTERNAL PARTS – STANDARD & DEHUMIDIFICATION



SEXP-1099

This drawing to be used for reference for pages 5 and 6

EXTERNAL PARTS – STANDARD & DEHUMIDIFICATION

Dwg No.	Part Number	Description	C36HF-A, B, C	C36HFDA, B, C	C42HF-A, B, C	C42HFDA, B, C	C48HF-A, B, C	C48HFDA, B, C	C60HF-A, B, C	C60HFDA, B, C
1	127-616BX	Base (only)	X	X	X	X	X	X	X	X
1	527-616BX	Base Assembly w/Compressor Plate	X	X	X	X	X	X	X	X
1	127-617BX ③	Base (only)	0	0	0	0	0	0	0	0
1	527-617BX ③	Base Assembly w/Compressor Plate	0	0	0	0	0	0	0	0
2	113-762BX	Front Base Bracket	X	X	X	X	X	X	X	X
2	113-797BX ③	Front Base Bracket	0	0	0	0	0	0	0	0
3	113-140BX	Bottom Mounting Bracket	X	X	X	X	X	X	X	X
4	119-125-*BX ①	Front Grille	X	X	X	X				
4	119-148BX ②	Front Grille	0	0	0	0				
4	119-135BX ③	Front Grille	0	0	0	0				
4	119-127-*BX ①	Front Grille					X	X	X	X
4	119-149BX ②	Front Grille					0	0	0	0
4	119-137BX ③	Front Grille					0	0	0	0
5	533-301-*BX ①	Control Panel Cover (Outer)	X	X	X	X	X	X	X	X
5	533-309BX ②	Control Panel Cover (Outer)	0	0	0	0	0	0	0	0
5	533-310BX ③	Control Panel Cover (Outer)	0	0	0	0	0	0	0	0
6	165-608-*BX ①	Rain Channel	X	X	X	X	X	X	X	X
6	165-609BX ②	Rain Channel	0	0	0	0	0	0	0	0
6	165-610BX ③	Rain Channel	0	0	0	0	0	0	0	0
For CABINET & CONDENSER FAN character X or D only (refer to page 2)										
7	515-323-*BX ①	Upper Front	X	X	X	X				
7	515-328BX ②	Upper Front	0	0	0	0				
7	515-330BX ③	Upper Front	0	0	0	0				
7	515-324-*BX ①	Upper Front					X	X	X	X
7	515-329BX ②	Upper Front					0	0	0	0
7	515-331BX ③	Upper Front					0	0	0	0
8	153-717-*BX ①	Disconnect Access Door	X	X	X	X	X	X	X	X
8	153-723BX ②	Disconnect Access Door	0	0	0	0	0	0	0	0
8	153-724BX ③	Disconnect Access Door	0	0	0	0	0	0	0	0
For CABINET & CONDENSER FAN character X or D only (refer to page 2)										
9	501-1127-*BX ①	Right Side Assembly	X	X	X	X				
9	501-1128BX ②	Right Side Assembly	0	0	0	0				
9	501-1129BX ③	Right Side Assembly	0	0	0	0				
9	501-1130-*BX ①	Right Side Assembly					X	X	X	X
9	501-1131BX ②	Right Side Assembly					0	0	0	0
9	501-1132BX ③	Right Side Assembly					0	0	0	0
For CABINET & CONDENSER FAN character X or D only (refer to page 2)										
10	501-1054-*BX ①	Left Side Assembly	X	X	X	X				
10	501-1073BX ②	Left Side Assembly	0	0	0	0				
10	501-1077BX ③	Left Side Assembly	0	0	0	0				
10	501-1056-*BX ①	Left Side Assembly					X	X	X	X
10	501-1075BX ②	Left Side Assembly					0	0	0	0
10	501-1079BX ③	Left Side Assembly					0	0	0	0
11	105X1454BX	Right Support Angle	X	X	X	X	X	X	X	X
12	105Y1454BX	Left Support Angle	X	X	X	X	X	X	X	X
13	105-1457BX	Coil Support	2	2	2	2				
13	105-1455BX	Coil Support					2	2	2	2

Continued on page 6

① Exterior cabinet parts are manufactured with various paint color options. To ensure the proper paint color is received, include the complete model and serial number of the unit for which cabinet parts are being ordered.

② Exterior cabinet parts are manufactured from aluminum Code "A"

③ Exterior cabinet parts are manufactured from stainless steel Code "S"

X – Standard Component
O – Optional Component

EXTERNAL PARTS – STANDARD & DEHUMIDIFICATION

Dwg No.	Part Number	Description	C36HF-A, B, C	C36HFDA, B, C	C42HF-A, B, C	C42HFDA, B, C	C48HF-A, B, C	C48HFDA, B, C	C60HF-A, B, C	C60HFDA, B, C
<i>Continued from page 5</i>										
14	147-055BX	Coil Support Offset	X	X	X	X				
14	147-054BX	Coil Support Offset					X	X	X	X
15	119-126-*BX ①	Side Grille	2	2	2	2				
15	119-142BX ②	Side Grille	2	2	2	2				
15	119-136BX ③	Side Grille	2	2	2	2				
15	119-128-*BX ①	Side Grille					2	2	2	2
15	119-143BX ②	Side Grille					2	2	2	2
15	119-138BX ③	Side Grille					2	2	2	2
16	105-1450BX	Right Control Panel Angle	X	X	X	X	X	X	X	X
17	105-1451BX	Left Control Panel Angle	X	X	X	X	X	X	X	X
18	543-221-*BX ①	Heater Access Cover	X	X	X	X	X	X	X	X
18	543-228BX ②	Heater Access Cover	0	0	0	0	0	0	0	0
18	543-229BX ③	Heater Access Cover	0	0	0	0	0	0	0	0
For CABINET & CONDENSER FAN character X or D only (refer to page 2)										
19	507-382-*BX ①	Top	X	X	X	X	X	X	X	X
19	507-391BX ②	Top	0	0	0	0	0	0	0	0
19	507-392BX ③	Top	0	0	0	0	0	0	0	0
20	109-412BX	Lower Back	X	X	X	X				
20	109-418BX	Lower Back	0	0	0	0				
20	109-422BX ③	Lower Back	0	0	0	0				
20	109-414BX	Lower Back					X	X	X	X
20	109-420BX	Lower Back					0	0	0	0
20	109-424BX ③	Lower Back					0	0	0	0
21	509-411BX	Upper Back	X	X	X	X				
21	509-417BX	Upper Back	0	0	0	0				
21	509-421BX ③	Upper Back	0	0	0	0				
21	509-413BX	Upper Back					X	X	X	X
21	509-419BX	Upper Back					0	0	0	0
21	509-423BX ③	Upper Back					0	0	0	0
22	111-299BX	Outlet Air Frame Assembly	X	X	X	X	X	X	X	X
23	535-129BX	Heat Shield	X	X	X	X	X	X	X	X
24	113-150-*BX ①	Top Rain Flashing	X	X	X	X	X	X	X	X
24	113-150-4BX ②	Top Rain Flashing	0	0	0	0	0	0	0	0
24	113-359BX ③	Top Rain Flashing	0	0	0	0	0	0	0	0
25	539-406BX	Fresh Air Damper Assembly	X	X	X	X	X	X	X	X
25	543-222BX	Intake Blank-Off Plate	0	0	0	0	0	0	0	0
26	543-220BX	Exhaust Blank-Off Plate	X	X	X	X	X	X	X	X
27	543-248-*BX ①	Access Cover	X	X	X	X	X	X	X	X
27	543-250BX ②	Access Cover	0	0	0	0	0	0	0	0
27	543-251BX ③	Access Cover	0	0	0	0	0	0	0	0
28	5252-033BX	Bard Nameplate	X	X	X	X	X	X	X	X

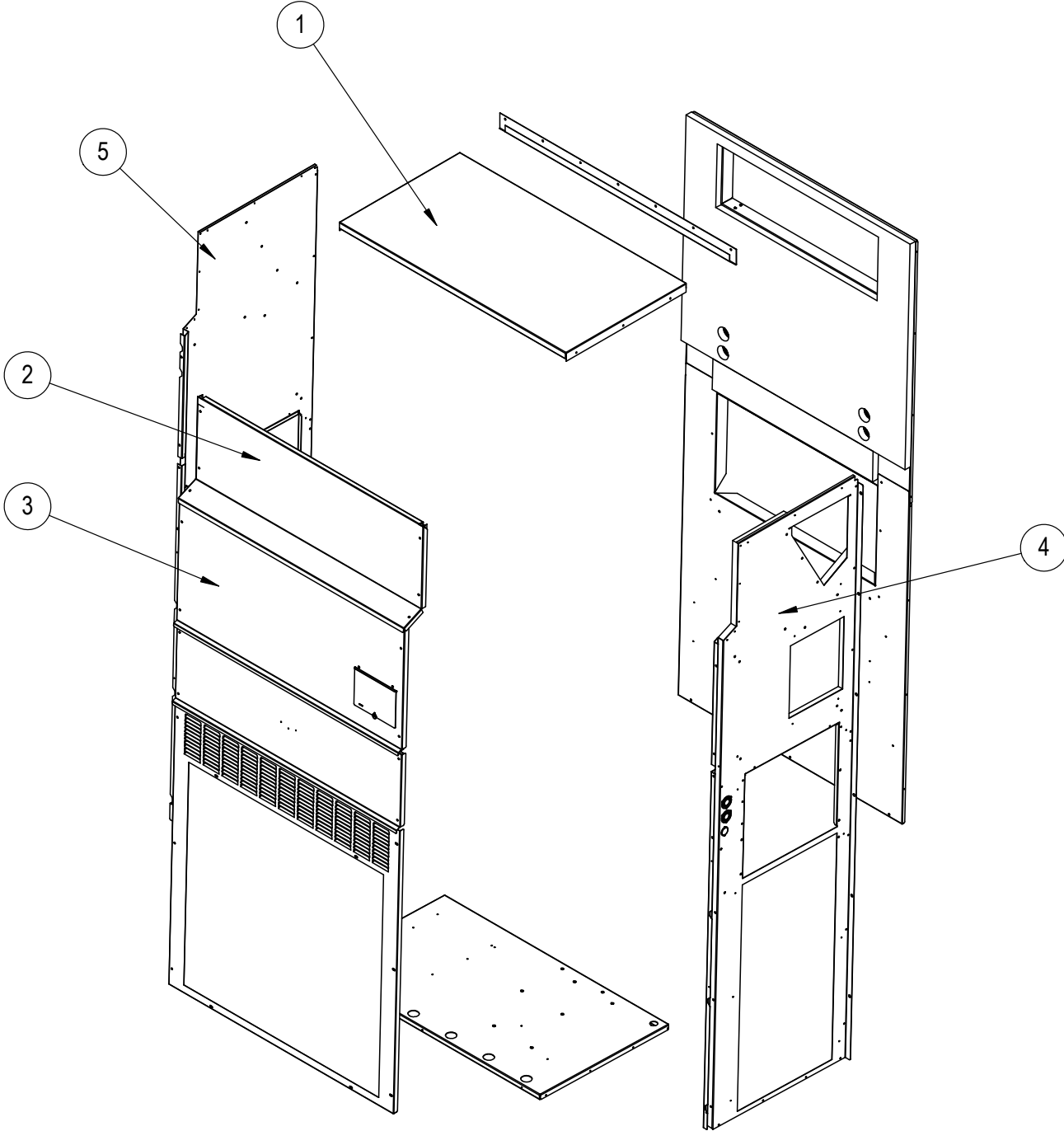
- ① Exterior cabinet parts are manufactured with various paint color options. To ensure the proper paint color is received, include the complete model and serial number of the unit for which cabinet parts are being ordered.
- ② Exterior cabinet parts are manufactured from aluminum Code "A"
NOTE: #24 - Top rain flashing not available in aluminum; order 113-150-4 (Gray).
- ③ Exterior cabinet parts are manufactured from stainless steel Code "S"

X – Standard Component
O – Optional Component

Refer to drawing on page 4

This page intentionally left blank

EXTERNAL PARTS - RECESSED CABINET



SEXP-1088

EXTERNAL PARTS – RECESSED CABINET

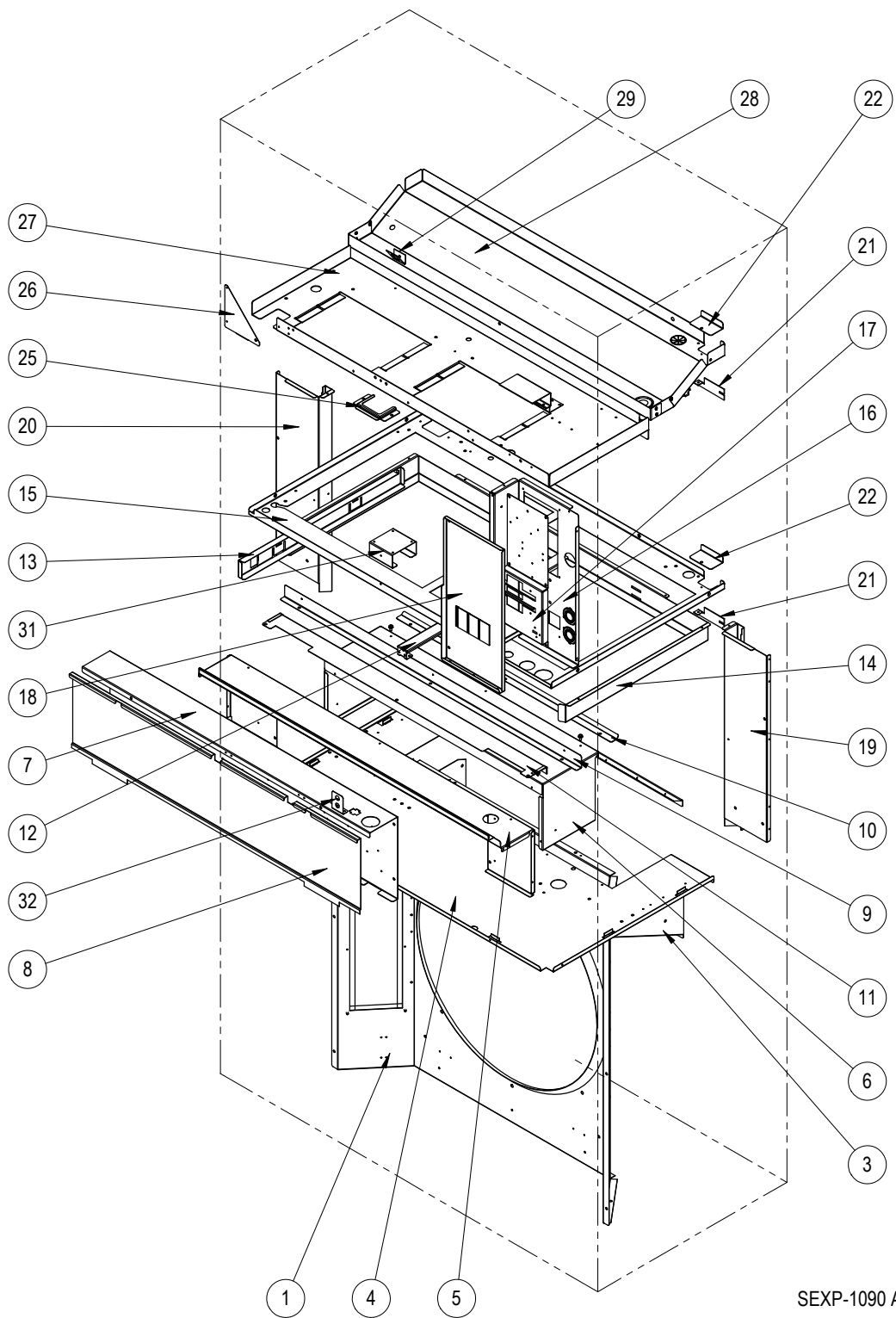
For CABINET & CONDENSER FAN character J or N only (refer to page 2)

Drawing No.	Part Number	Description	C36HF-A, B, C	C42HF-A, B, C	C48HF-A, B, C	C60HF-A, B, C
1	507-413-*BX ①	Top	X	X	X	X
2	515-354-*BX ①	Upper Front	X	X		
2	515-356-*BX ①	Upper Front			X	X
3	515-355-*BX ①	Center Front	X	X		
3	515-357-*BX ①	Center Front			X	X
4	501-1142-*BX ①	Right Side Assembly	X	X		
4	501-1144-*BX ①	Right Side Assembly			X	X
5	501-1143-*BX ①	Left Side Assembly	X	X		
5	501-1145-*BX ①	Left Side Assembly			X	X

- ① Exterior cabinet parts are manufactured with various paint color options. To ensure the proper paint color is received, include the complete model and serial number of the unit for which cabinet parts are being ordered.

NOTE: The replacement cabinet parts listed above are specific to the **recessed unit C36/42/48/60HF heat pump models**. All other replacement cabinet external parts for these models are referenced on pages 4, 5 and 6.

INTERNAL PARTS – STANDARD & DEHUMIDIFICATION



This drawing to be used for reference for pages 11 and 12

INTERNAL PARTS – STANDARD & DEHUMIDIFICATION

Dwg. No.	Part Number	Description	C36HF-A, B	C36HF-C	C42HF-A, B	C42HF-C	C36HFDA, B	C36HFDC	C42HFDA, B	C42HFDC
Reference CABINET & CONDENSER FAN on page 2										
1	921-0120BX	Fan Shroud - Draw Thru (Character D or N)	X	X	X	X	X	X	X	X
1	921-0122BX	Fan Shroud - Blow Thru (Character X or J)	X	X	X	X	X	X	X	X
1	921-0124BX	Fan Shroud - Draw Thru - Stainless (Character D or N)	O	O	O	O	O	O	O	O
1	921-0126BX	Fan Shroud - Blow Thru - Stainless (Character X or J)	O	O	O	O	O	O	O	O
3	121-586BX	Condenser Partition Insert	X	X	X	X	X	X	X	X
3	121-600BX	Condenser Partition Insert - Stainless	O	O	O	O	O	O	O	O
4	121-585BX	Condenser Partition	X	X	X	X	X	X	X	X
4	121-599BX	Condenser Partition - Stainless	O	O	O	O	O	O	O	O
5	521-630BX	Front Exhaust Partition	X	X	X	X	X	X	X	X
6	521-587BX	Exhaust Partition	X	X	X	X	X	X	X	X
7	Control Panel Assy.	See Control Panel beginning on page 20	X	X	X	X	X	X	X	X
8	133-330BX	Control Panel Cover (Inner)	X	X	X	X	X	X	X	X
9	105-1453BX	Front Vent Guide Rail	X	X	X	X	X	X	X	X
10	105-1452BX	Vent Guide Rail	X	X	X	X	X	X	X	X
11	135-409BX	Field Wire Shield	X	X	X	X	X	X	X	X
12	131-168BX	Filter Support Bracket	X	X	X	X	X	X	X	X
13	131-170BX	Filter Slide	X	X	X	X	X	X	X	X
14	131-169BX	Filter Rack Frame	X	X	X	X	X	X	X	X
15	121-583BX	Filter Partition	X	X	X	X	X	X	X	X
16	117-412BX	Upper Control Panel	X	X	X	X	X	X	X	X
17	127-575BX	Circuit Breaker Base - 230V	X		X		X		X	
17	127-585BX	Circuit Breaker Base - 460V		X		X		X		X
18	133-303BX	Upper Control Panel Cover	X		X		X		X	
18	133-304BX	Upper Control Panel Cover		X		X		X		X
19	135X393BX	Right Copper Chase	X	X	X	X	X	X	X	X
19	135-397BX	Right Copper Chase - Stainless	O	O	O	O	O	O	O	O
20	135Y393BX	Left Copper Chase	X	X	X	X	X	X	X	X
20	135-398BX	Left Copper Chase - Stainless	O	O	O	O	O	O	O	O
21	113-796BX	Copper Retainer					2	2	2	2
22	137-920BX	Copper Fill Plate	2	2	2	2				
25	113-765BX	Grommet Retainer Bracket	X	X	X	X	X	X	X	X
26	141-492BX	Blower Partition Support	X	X	X	X	X	X	X	X
27	121-582BX	Blower Partition	X	X	X	X	X	X	X	X
28	523-161BX	Drain Pan Assembly	X	X	X	X	X	X	X	X
28	523-162BX	Drain Pan Assembly - Stainless	O	O	O	O	O	O	O	O
29	113-967BX	TXV Bracket	X	X	X	X		X	X	X
29	113-768BX	EEV Mounting Bracket					X	X	X	X
31	113-788BX	Filter Switch Bracket	O	O	O	O	O	O	O	O
32	113-789BX	Filter Switch Light Bracket	O	O	O	O	O	O	O	O
NS	113-324BX	Transformer Mounting Plate		X		X		X		X
NS	113-381BX	TXV Bulb Bracket	X	X	X	X				
NS	113-809BX	Heating Expansion Valve Bracket	X	X	X	X				

NS = Not Shown

X – Standard Component
O – Optional Component

INTERNAL PARTS – STANDARD & DEHUMIDIFICATION

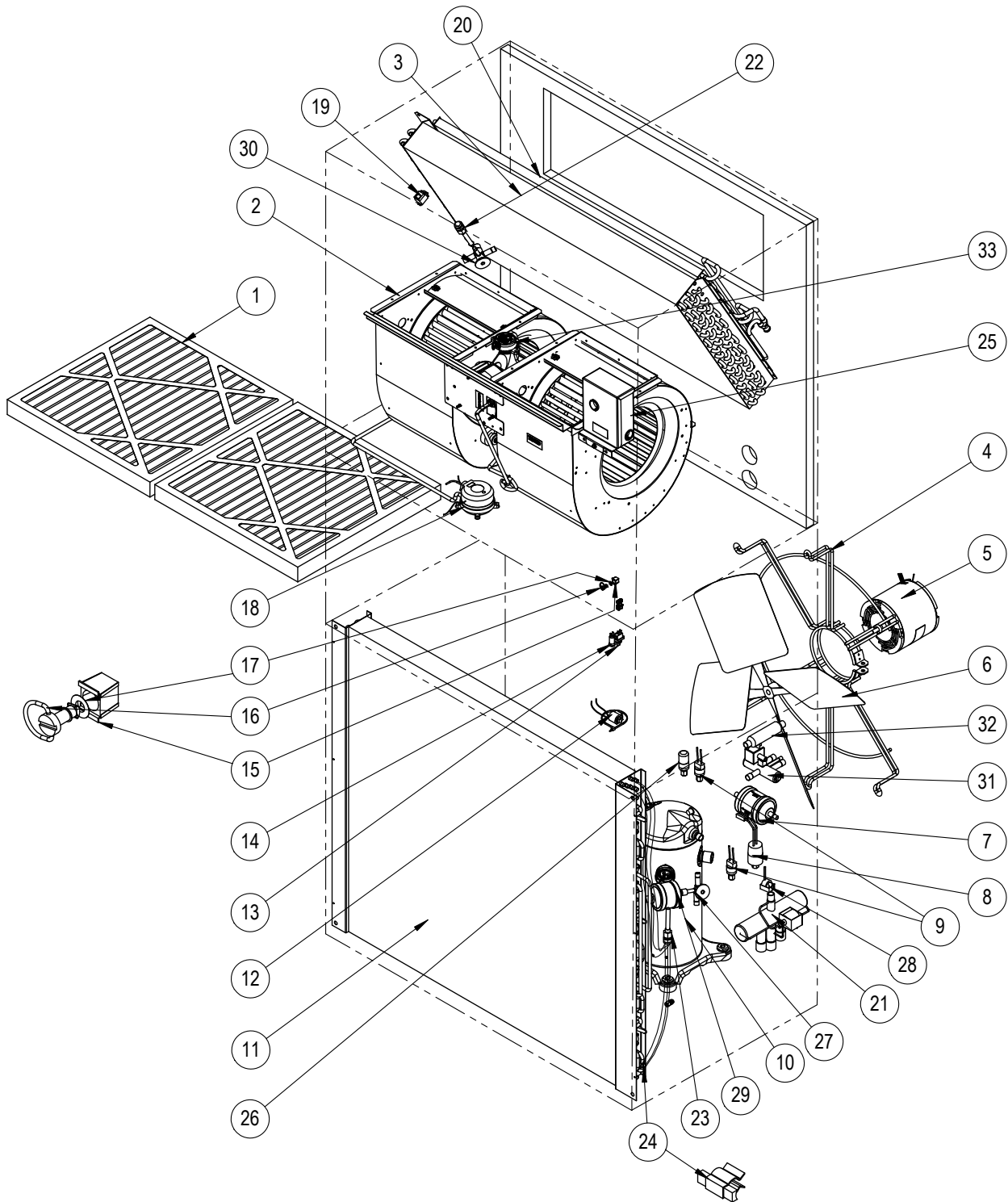
Dwg. No.	Part Number	Description	C48HF-A, B	C48HF-C	C60HF-A, B	C60HF-C	C48HFDA, B	C48HFDC	C60HFDA, B	C60HFDC
Reference CABINET & CONDENSER FAN on page 2										
1	921-0121BX	Fan Shroud - Draw Thru (Character D or N)	X	X	X	X	X	X	X	X
1	921-0123BX	Fan Shroud - Blow Thru (Character X or J)	X	X	X	X	X	X	X	X
1	921-0125BX	Fan Shroud - Draw Thru - Stainless (Character D or N)	O	O	O	O	O	O	O	O
1	921-0127BX	Fan Shroud - Blow Thru - Stainless (Character X or J)	O	O	O	O	O	O	O	O
3	121-586BX	Condenser Partition Insert	X	X	X	X	X	X	X	X
3	121-600BX	Condenser Partition Insert - Stainless	O	O	O	O	O	O	O	O
4	121-585BX	Condenser Partition	X	X	X	X	X	X	X	X
4	121-599BX	Condenser Partition - Stainless	O	O	O	O	O	O	O	O
5	521-630BX	Front Exhaust Partition	X	X	X	X	X	X	X	X
6	521-587BX	Exhaust Partition	X	X	X	X	X	X	X	X
7	Control Panel Assy.	See Control Panel beginning on page 20	X	X	X	X	X	X	X	X
8	133-330BX	Control Panel Cover (Inner)	X	X	X	X	X	X	X	X
9	105-1453BX	Front Vent Guide Rail	X	X	X	X	X	X	X	X
10	105-1452BX	Vent Guide Rail	X	X	X	X	X	X	X	X
11	135-409BX	Field Wire Shield	X	X	X	X	X	X	X	X
12	131-168BX	Filter Support Bracket	X	X	X	X	X	X	X	X
13	131-170BX	Filter Slide	X	X	X	X	X	X	X	X
14	131-169BX	Filter Rack Frame	X	X	X	X	X	X	X	X
15	121-583BX	Filter Partition	X	X	X	X	X	X	X	X
16	117-412BX	Upper Control Panel	X	X	X	X	X	X	X	X
17	127-575BX	Circuit Breaker Base - 230V	X		X		X		X	
17	127-585BX	Circuit Breaker Base - 460V		X		X		X		X
18	133-303BX	Upper Control Panel Cover	X		X		X		X	
18	133-304BX	Upper Control Panel Cover		X		X		X		X
19	135X393BX	Right Copper Chase	X	X	X	X	X	X	X	X
19	135-397BX	Right Copper Chase - Stainless	O	O	O	O	O	O	O	O
20	135Y393BX	Left Copper Chase	X	X	X	X	X	X	X	X
20	135-398BX	Left Copper Chase - Stainless	O	O	O	O	O	O	O	O
21	113-796BX	Copper Retainer					2	2	2	2
22	137-920BX	Copper Fill Plate	2	2	2	2				
25	113-765BX	Grommet Retainer Bracket	X	X	X	X	X	X	X	X
26	141-492BX	Blower Partition Support	X	X	X	X	X	X	X	X
27	121-582BX	Blower Partition	X	X	X	X	X	X	X	X
28	523-161BX	Drain Pan Assembly	X	X	X	X	X	X	X	X
28	523-162BX	Drain Pan Assembly - Stainless	O	O	O	O	O	O	O	O
29	113-967BX	TXV Bracket	X	X	X	X				
29	113-768BX	EEV Mounting Bracket					X	X	X	X
31	113-788BX	Filter Switch Bracket	O	O	O	O	O	O	O	O
32	113-789BX	Filter Switch Light Bracket	O	O	O	O	O	O	O	O
NS	113-324BX	Transformer Mounting Plate		X		X		X		X
NS	113-381BX	TXV Bulb Bracket	X	X	X	X				
NS	113-809BX	Heating Expansion Valve Bracket	X	X	X	X				

NS = Not Shown

X – Standard Component
O – Optional Component

This page intentionally left blank

FUNCTIONAL COMPONENTS – STANDARD & DEHUMIDIFICATION



SEXP-1089 A

This drawing to be used for reference for pages 15, 16, 17 and 18

FUNCTIONAL COMPONENTS – STANDARD & DEHUMIDIFICATION

Dwg. No.	Part Number	Description	C36HF-A	C36HF-B	C36HF-C	C42HF-A	C42HF-B	C42HF-C	C36HFDA	C36HFDB	C36HFDC	C42HFDA	C42HFDB	C42HFDC
1	7004-012	Air Filter 1" Throw-Away (20 x 20 x 1)	2	2	2	2	2	2	2	2	2	2	2	2
1	7003-085 ①	Air Filter 1" Washable (20 x 20 x 1)	2	2	2	2	2	2	2	2	2	2	2	2
1	7004-052 ①	Air Filter 2" Merv 8 (20 x 20 x 2)	2	2	2	2	2	2	2	2	2	2	2	2
1	7004-060 ①	Air Filter 2" Merv 11 (20 x 20 x 2)	2	2	2	2	2	2	2	2	2	2	2	2
1	7004-063 ①	Air Filter 2" Merv 13 (20 x 20 x 2)	2	2	2	2	2	2	2	2	2	2	2	2
2	900-398-0237BX	Blower Assembly	X	X	X				X	X	X			
2	900-398-0238BX	Blower Assembly				X	X	X				X	X	X
3	917-0405BX	Indoor Coil w/Distributor Assy.	X	X	X				X	X	X			
3	917-0406BX	Indoor Coil - Coated w/Distributor Assy.	O	O	O				O	O	O			
3	917-0409BX	Indoor Coil w/Distributor Assy.				X	X	X				X	X	X
3	917-0410BX	Indoor Coil - Coated w/Distributor Assy..				O	O	O				O	O	O
4	8200-049BX	Fan Motor Mount	X	X	X	X	X	X	X	X	X	X	X	X
4	8200-052BX	Fan Motor Mount - Stainless Steel	O	O	O	O	O	O	O	O	O	O	O	O
5	8105-078BX	Condenser Motor - 230V	X	X		X	X		X	X		X	X	
5	8105-071BX	Condenser Motor - 460V			X			X			X			X
Reference CABINET & CONDENSER FAN on page 2														
6	5151-054BX	Fan Blade - Draw Thru (Character D or N)	X	X	X	X	X	X	X	X	X	X	X	X
6	5151C054BX	Fan Blade - Draw Thru - Coated (Character D or N)	O	O	O	O	O	O	O	O	O	O	O	O
6	5151-060BX	Fan Blade - Blow Thru (Character X or J)	X	X	X	X	X	X	X	X	X	X	X	X
6	5151C060BX	Fan Blade - Blow Thru - Coated (Character X or J)	O	O	O	O	O	O	O	O	O	O	O	O
7	5201-020BX	H/P Liquid Filter Drier	X	X	X	X	X	X	X	X	X	X	X	X
8	8406-105BX	Low Ambient Control (LAC)	O	O	O	O	O	O	O	O	O	O	O	O
9	8406-167BX	High Pressure Switch	X	X	X	X	X	X	X	X	X	X	X	X
9	8406-168BX	Low Pressure Switch	X	X	X	X	X	X	X	X	X	X	X	X
10	8000-518BX	Compressor YAS30K1E-PFV-ASE	X						X					
10	8000-519BX	Compressor YAS30K1E-TF5-ASE		X						X				
10	8000-520BX	Compressor YAS30K1E-TFD-ASE			X						X			
10	8000-521BX	Compressor YAS35K1E-PFV-ASE				X						X		
10	8000-522BX	Compressor YAS35K1E-TF5-ASE					X						X	
10	8000-523BX	Compressor YAS35K1E-TFD-ASE						X						X
11	917-0413BX	Outdoor Coil (Includes Distributor)	X	X	X				X	X	X			
11	917-0414BX	Outdoor Coil - Coated (Includes Distributor)	O	O	O				O	O	O			
11	917-0415BX	Outdoor Coil (Includes Distributor)				X	X	X				X	X	X
11	917-0416BX	Outdoor Coil - Coated (Includes Distributor)				O	O	O				O	O	O
13	3000-1638BX	Dirty Filter Reset Switch	O	O	O	O	O	O	O	O	O	O	O	O
14	8611-094BX	Red Indicator Light - 24VAC	O	O	O	O	O	O	O	O	O	O	O	O
15	1171-023	1/4 Turn Receptacle	X	X	X	X	X	X	X	X	X	X	X	X
16	1171-022	1/4 Turn Fastener	X	X	X	X	X	X	X	X	X	X	X	X
17	1171-024	1/4 Turn Retainer	X	X	X	X	X	X	X	X	X	X	X	X
18	8301-057BX	Filter Pressure Switch	O	O	O	O	O	O	O	O	O	O	O	O
19	CMC-29	Freeze Protection Thermostat	O	O	O	O	O	O	O	O	O	O	O	O
20	5051-221BX	Reheat Coil							X	X	X	X	X	X
20	5054-221BX	Reheat Coil - Coated							O	O	O	O	O	O
21	5650-040BX	Reversing Valve	X	X	X	X	X	X	X	X	X	X	X	X
22	800-0461BX	Distributor Assembly - Indoor Coil	X	X	X				X	X	X			
22	800-0424BX	Distributor Assembly - Indoor Coil				X	X	X				X	X	X
23	800-0424BX	Distributor Assembly - Outdoor Coil	X	X	X				X	X	X			
23	800-0467BX	Distributor Assembly - Outdoor Coil				X	X	X				X	X	X

Continued on page 16

① – Optional on these models

X – Standard Component
O – Optional Component

FUNCTIONAL COMPONENTS – STANDARD & DEHUMIDIFICATION

Dwg. No.	Part Number	Description	C36HF-A	C36HF-B	C36HF-C	C42HF-A	C42HF-B	C42HF-C	C36HFDA	C36HFDB	C36HFDC	C42HFDA	C42HFDB	C42HFDC
<i>Continued from page 15</i>														
24	8620-225	Defrost Thermistor Sensor	X	X	X	X	X	X	X	X	X	X	X	X
25	910-2050-005	EEV Controller (see EEV Controller Assembly on page 27)							X	X	X	X	X	X
26	8406-158BX	Low Pressure Transducer							X	X	X	X	X	X
27	5651-253BX	Heating Expansion Valve	X	X	X									
27	5651-262BX	Heating Expansion Valve				X	X	X						
28	8408-039BX	Discharge Line Thermostat	X	X	X	X	X	X						
29	5220-013BX	Pulsation Dampener/Muffler	X	X	X	X	X	X	X	X	X	X	X	X
30	5651-262BX	Cooling Expansion Valve	X	X	X	X	X	X						
30	905-0737BX	EEV Valve Assembly							X	X	X	X	X	X
31	5650-051BX	Dehumidification Valve							X	X	X	X	X	X
32	5651-219BX	Check Valve							2	2	2	2	2	2
33	8301-110BX	RDS Sensor	X	X	X	X	X	X	X	X	X	X	X	X
NS	8401-036BX	RDS Relay	X	X	X	X	X	X	X	X	X	X	X	X
NS	3000-1824BX	RDS Harness	X	X	X	X	X	X	X	X	X	X	X	X
NS	910-2188BX	460V Transformer Assembly			X			X			X			X
NS	CMC-33	Dirty Filter Switch Kit = Item #'s 13,14,18	0	0	0	0	0	0	0	0	0	0	0	0
NS	5650-042BX	Dehum/Rev. Valve Solenoid, Red Casing (Ranco)	X	X	X	X	X	X	X	X	X	X	X	X
NS	5650-046BX	Dehum/Rev. Valve Solenoid, Black Casing (San Hua)	X	X	X	X	X	X	X	X	X	X	X	X
NS	5451-024	Tubing Isolation Grommet	2	2	2	2	2	2	2	2	2	2	2	2
NS	6031-009	Coremax Valve Core	2	2	2	2	2	2	2	2	2	2	2	2
NS	1171-028	Control Panel Door Clip	4	4	4	4	4	4	4	4	4	4	4	4
NS	1171-057	Control Panel Door Screw	4	4	4	4	4	4	4	4	4	4	4	4
NS	1171-027	Control Panel Door Screw Retainer	4	4	4	4	4	4	4	4	4	4	4	4
NS	5650-054	Molded Plug for Rev/Dehum Valves	X	X	X	X	X	X	X	X	X	X	X	X
NS	8620-370	NPBI Kit	0	0	0	0	0	0	0	0	0	0	0	0
NS	8620-343	UVC Kit	0	0	0	0	0	0	0	0	0	0	0	0

NS = Not Shown

X – Standard Component
O – Optional Component

Refer to drawing on page 14

FUNCTIONAL COMPONENTS – STANDARD & DEHUMIDIFICATION

Dwg. No.	Part Number	Description	C48HF-A	C48HF-B	C48HF-C	C60HF-A	C60HF-B	C60HF-C	C48HFDA	C48HFDB	C48HFDC	C60HFDA	C60HFDB	C60HFDC
1	7004-012	Air Filter 1" Throw-Away (20 x 20 x 1)	2	2	2	2	2	2	2	2	2	2	2	2
1	7003-085 ①	Air Filter 1" Washable (20 x 20 x 1)	2	2	2	2	2	2	2	2	2	2	2	2
1	7004-052 ①	Air Filter 2" Merv 8 (20 x 20 x 2)	2	2	2	2	2	2	2	2	2	2	2	2
1	7004-060 ①	Air Filter 2" Merv 11 (20 x 20 x 2)	2	2	2	2	2	2	2	2	2	2	2	2
1	7004-063 ①	Air Filter 2" Merv 13 (20 x 20 x 2)	2	2	2	2	2	2	2	2	2	2	2	2
2	900-397-0239BX	Blower Assembly	X	X	X				X	X	X			
2	900-397-0240BX	Blower Assembly				X	X	X				X	X	X
3	917-0376BX	Indoor Coil w/Distributor Assy.	X	X	X	X	X	X	X	X	X	X	X	X
3	917-0377BX	Indoor Coil - Coated w/Distributor Assy.	0	0	0	0	0	0	0	0	0	0	0	0
4	8200-049BX	Fan Motor Mount	X	X	X	X	X	X	X	X	X	X	X	X
4	8200-052BX	Fan Motor Mount - Stainless Steel	0	0	0	0	0	0	0	0	0	0	0	0
5	8105-078BX	Condenser Motor - 230V	X	X					X	X				
5	8105-071BX	Condenser Motor - 460V			X						X			
5	8106-053-0241BX	Programmed Condenser Motor & Control (230/208V)				X	X					X	X	
5	8106-081-0253BX	Programmed Condenser Motor & Control (460V)						X						X
Reference CABINET & CONDENSER FAN on page 2														
6	5151-054BX	Fan Blade - Draw Thru (Character D or N)	X	X	X	X	X	X	X	X	X	X	X	X
6	5151C054BX	Fan Blade - Draw Thru - Coated (Character D or N)	0	0	0	0	0	0	0	0	0	0	0	0
6	5151-060BX	Fan Blade - Blow Thru (Character X or J)	X	X	X	X	X	X	X	X	X	X	X	X
6	5151C060BX	Fan Blade - Blow Thru - Coated (Character X or J)	0	0	0	0	0	0	0	0	0	0	0	0
7	5201-020BX	H/P Liquid Filter Drier	X	X	X	X	X	X	X	X	X	X	X	X
8	8406-105BX	Low Ambient Control (LAC)	0	0	0	0	0	0	0	0	0	0	0	0
9	8406-167BX	High Pressure Switch	X	X	X	X	X	X	X	X	X	X	X	X
9	8406-168BX	Low Pressure Switch	X	X	X	X	X	X	X	X	X	X	X	X
10	8000-524BX	Compressor YAS40K1E-PFV-ASE	X						X					
10	8000-525BX	Compressor YAS40K1E-TF5-ASE		X						X				
10	8000-526BX	Compressor YAS40K1E-TFD-ASE			X						X			
10	8000-527BX	Compressor YAS51K1E-PFV-ASE				X						X		
10	8000-528BX	Compressor YAS51K1E-TF5-ASE					X						X	
10	8000-529BX	Compressor YAS51K1E-TFD-ASE						X						X
11	917-0417BX	Outdoor Coil (Includes Distributor)	X	X	X	X	X	X	X	X	X	X	X	X
11	917-0418BX	Outdoor Coil - Coated (Includes Distributor)	0	0	0	0	0	0	0	0	0	0	0	0
13	3000-1638BX	Dirty Filter Reset Switch	0	0	0	0	0	0	0	0	0	0	0	0
14	8611-094BX	Red Indicator Light - 24VAC	0	0	0	0	0	0	0	0	0	0	0	0
15	1171-023	1/4 Turn Receptacle	X	X	X	X	X	X	X	X	X	X	X	X
16	1171-022	1/4 Turn Fastener	X	X	X	X	X	X	X	X	X	X	X	X
17	1171-024	1/4 Turn Retainer	X	X	X	X	X	X	X	X	X	X	X	X
18	8301-057BX	Filter Pressure Switch	0	0	0	0	0	0	0	0	0	0	0	0
19	CMC-29	Freeze Protection Thermostat	0	0	0	0	0	0	0	0	0	0	0	0
20	5051-221BX	Reheat Coil							X	X	X	X	X	X
20	5054-221BX	Reheat Coil - Coated							0	0	0	0	0	0
21	5650-040BX	Reversing Valve	X	X	X	X	X	X	X	X	X	X	X	X
22	800-0455BX	Distributor Assembly - Indoor Coil	X	X	X	X	X	X	X	X	X	X	X	X
23	800-0455BX	Distributor Assembly - Outdoor Coil	X	X	X	X	X	X	X	X	X	X	X	X
24	8620-225	Defrost Thermistor Sensor	X	X	X	X	X	X						

Continued on page 18

① – Optional on these models

X – Standard Component
0 – Optional Component

Refer to drawing on page 14

FUNCTIONAL COMPONENTS – STANDARD & DEHUMIDIFICATION

Dwg. No.	Part Number	Description	C48HF-A	C48HF-B	C48HF-C	C60HF-A	C60HF-B	C60HF-C	C48HFDA	C48HFDB	C48HFDC	C60HFDA	C60HFDB	C60HFDC
<i>Continued from page 17</i>														
25	910-2050-006	EEV Controller (see EEV Controller Assembly on page 27)							X	X	X	X	X	X
26	8406-158BX	Low Pressure Transducer							X	X	X	X	X	X
27	5651-263BX	Heating Expansion Valve	X	X	X	X	X	X						
28	8408-039BX	Discharge Line Thermostat	X	X	X	X	X	X	X	X	X	X	X	X
29	5220-013BX	Pulsation Dampener/Muffler	X	X	X	X	X	X	X	X	X	X	X	X
30	5651-263BX	Cooling Expansion Valve	X	X	X	X	X	X						
30	905-0737BX	EEV Valve Assembly							X	X	X			
30	905-0745BX	EEV Valve Assembly										X	X	X
31	5650-051BX	Dehumidification Valve							X	X	X	X	X	X
32	5651-219BX	Check Valve							2	2	2	2	2	2
33	8301-110BX	RDS Sensor	X	X	X	X	X	X	X	X	X	X	X	X
NS	8401-036BX	RDS Relay	X	X	X	X	X	X	X	X	X	X	X	X
NS	3000-1824BX	RDS Harness	X	X	X	X	X	X	X	X	X	X	X	X
NS	910-2188BX	460V Transformer Assembly			X						X			
NS	910-2220BX	460V Transformer Assembly					X							X
NS	CMC-33	Dirty Filter Switch Kit = Item #'s 13,14,18	0	0	0	0	0	0	0	0	0	0	0	0
NS	5650-042BX	Dehum/Rev. Valve Solenoid, Red Casing (Ranco)	X	X	X	X	X	X	X	X	X	X	X	X
NS	5650-046BX	Dehum/Rev. Valve Solenoid, Black Casing (San Hua)	X	X	X	X	X	X	X	X	X	X	X	X
NS	5451-024	Tubing Isolation Grommet	2	2	2	2	2	2	2	2	2	2	2	2
NS	6031-009	Coremax Valve Core	2	2	2	2	2	2	2	2	2	2	2	2
NS	1171-028	Control Panel Door Clip	4	4	4	4	4	4	4	4	4	4	4	4
NS	1171-057	Control Panel Door Screw	4	4	4	4	4	4	4	4	4	4	4	4
NS	1171-027	Control Panel Door Screw Retainer	4	4	4	4	4	4	4	4	4	4	4	4
NS	5650-054	Molded Plug for Rev/Dehum Valves	X	X	X	X	X	X	X	X	X	X	X	X
NS	8620-370	NPBI Kit	0	0	0	0	0	0	0	0	0	0	0	0
NS	8620-343	UVC Kit	0	0	0	0	0	0	0	0	0	0	0	0

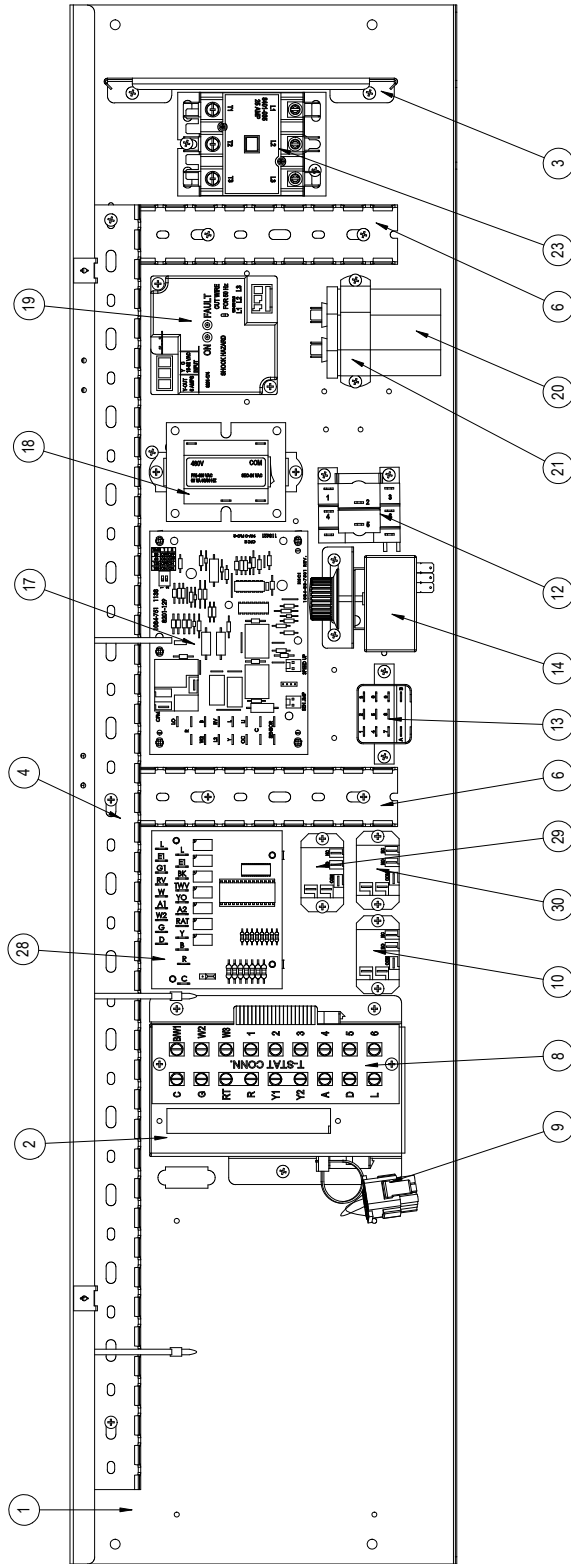
NS = Not Shown

X – Standard Component
O – Optional Component

Refer to drawing on page 14

This page intentionally left blank

CONTROL PANEL – 230V 1PH & 230V 3PH



SEXP-1131

This drawing to be used for reference for pages 21 and 22

CONTROL PANEL – 230V 1PH & 230V 3PH

Dwg. No.	Part Number	Description	C36HF-A	C36HF-B	C42HF-A	C42HF-B	C48HF-A	C48HF-B	C60HF-A	C60HF-B	C36HFDA	C36HFDB	C42HFDA	C42HFDB	C48HFDA	C48HFDB	C60HFDA	C60HFDB
1	117-456BX	Control Panel	X	X	X	X	X	X	X	X	X	X	X	X	X	X	X	X
2	910-2206BX	Complete Low Voltage Box Assembly (Sheet metal, Terminal Strip & Wire Harness)	X	X	X	X	X	X	X	X	X	X	X	X	X	X	X	X
3	135-394BX	Wire Shield	X	X	X	X	X	X	X	X	X	X	X	X	X	X	X	X
4	8611-244-3208	Cable Duct - 32.5"	X	X	X	X	X	X	X	X	X	X	X	X	X	X	X	X
6	8611-244-0608	Cable Duct - 6.5"	2	2	2	2	2	2	2	2	2	2	2	2	2	2	2	2
8	8607-063BX	Low Voltage Terminal Strip - 18 Terminal	X	X	X	X	X	X	X	X	X	X	X	X	X	X	X	X
9	3000-1524BX	Vent Jumper Plug (used when no vent option)	X	X	X	X	X	X	X	X	X	X	X	X	X	X	X	X
10	8201-130BX	Alarm Relay (Kit = CMC-35)	0	0	0	0	0	0	0	0	0	0	0	0	0	0	0	0
12	8201-086BX	OD T-Stat/LAC Relay (LAC Kit = CMH-35)	0	0	0	0	0	0	0	0	0	0	0	0	0	0	0	0
13	8201-159BX	Dirty Filter Relay (Kit = CMC-33)	0	0	0	0	0	0	0	0	0	0	0	0	0	0	0	0
14	8408-028BX	Outdoor Thermostat (ODT Kit = CMH-36)	0	0	0	0	0	0	0	0	0	0	0	0	0	0	0	0
17	8620-223	Defrost Logic Control Board w/Sensor	X	X	X	X	X	X	X	X	X	X	X	X	X	X	X	X
18	8407-065BX	Transformer 208/240-24VAC 75VA	X	X	X	X	X	X	X	X	X	X	X	X	X	X	X	X
19	8201-174BX	3 Phase Line Monitor 50/60Hz		X		X		X		X		X		X		X		X
20	8552-005BX	Capacitor 10MFD 370V 1-1/4" O		X		X		X				X		X		X		
20	8552-055BX	Capacitor 40/10 MFD 440V					X								X			
20	8552-079BX	Capacitor 45/10 MFD 370V 2.5" R	X								X							
20	8552-080BX	Capacitor 40/10 MFD 370V 2.0" R			X							X						
20	8552-096BX	Capacitor 40MFD 440V 2" R							X								X	
21	8550-003BX	Capacitor Bracket 1-1/4" Oval		X		X		X				X		X		X		
21	8550-007BX	Capacitor Bracket 2" Round							X								X	
21	8550-008BX	Capacitor Bracket 2-1/2" Round	X		X		X				X		X		X			
23	8401-035BX	Contactor 3-Pole 25 Amp		X		X		X		X		X		X		X		X
23	8401-034BX	Contactor 2-Pole 40 Amp	X		X		X		X		X		X		X		X	
NS	8201-130BX	Outdoor Fan Relay (located where 3 phase monitor or capacitor device shown)							X	X							X	X
28	8201-113BX	Dehum Logic Board									X	X	X	X	X	X	X	X
29	8201-130BX	Dehum Control Relay									X	X	X	X	X	X	X	X
30	8201-130BX	3-Way Valve Control Relay															X	X
NS	8615-037BX	Circuit Breaker 30A 2 Pole ①	0								0							
NS	8615-038BX	Circuit Breaker 35A 2 Pole ①			0		0											
NS	8615-055BX	Circuit Breaker 40A 2 Pole ①											0		0			
NS	8615-040BX	Circuit Breaker 50A 2 Pole ①							0								0	
NS	8615-051BX	Circuit Breaker 25A 3 Pole ①		0		0						0						
NS	8615-052BX	Circuit Breaker 30A 3 Pole ①						0						0		0		
NS	8615-042BX	Circuit Breaker 35A 3 Pole ①							0									0
NS	4217-101	Wiring Diagram	X		X		X											
NS	4217-102	Wiring Diagram							X									
NS	4217-103	Wiring Diagram									X		X		X			
NS	4217-104	Wiring Diagram															X	
NS	4217-201	Wiring Diagram		X		X		X										
NS	4217-202	Wiring Diagram							X									
NS	4217-203	Wiring Diagram									X		X		X			
NS	4217-204	Wiring Diagram																X

Continued on page 22

NS = Not Shown

X – Standard Component

① Circuit breakers listed are for units without electric heat, "0Z" models.

O – Optional Component

See heater replacement parts manual for units with electric heat.

CONTROL PANEL – 230V 1PH & 230V 3PH

Dwg. No.	Part Number	Description	C36HF-A	C36HF-B	C42HF-A	C42HF-B	C48HF-A	C48HF-B	C60HF-A	C60HF-B	C36HFDA	C36HFDB	C42HFDA	C42HFDB	C48HFDA	C48HFDB	C60HFDA	C60HFDB
<i>Continued from page 21</i>																		
NS	3000-1706BX	Blower Power Plug	X	X	X	X	X	X	X	X	X	X	X	X	X	X	X	X
NS	3000-1732BX	Blower Speed Plug	X	X	X	X	X	X	X	X	X	X	X	X	X	X	X	X
NS	3000-1222BX	Compressor Plug/Harness	X		X		X		X		X		X		X		X	
NS	3000-1230BX	Compressor Plug/Harness		X		X		X		X		X		X		X		X
NS	3000-1223BX	Compressor Plug/Harness - Stage 2 Plug	X	X	X	X	X	X	X	X	X	X	X	X	X	X	X	X
NS	3003-178BX	Control Panel Wire Harness	X		X		X											
NS	3003-179BX	Control Panel Wire Harness		X		X		X										
NS	3003-181BX	Control Panel Wire Harness									X		X		X			
NS	3003-182BX	Control Panel Wire Harness										X		X		X		
NS	3003-184BX	Control Panel Wire Harness							X									
NS	3003-185BX	Control Panel Wire Harness								X								
NS	3003-186BX	Control Panel Wire Harness															X	
NS	3003-187BX	Control Panel Wire Harness																X
NS	8551-004BX	Start Device (PTCR) (Kit = CMC-32)	O		O		O		O		O		O		O		O	
NS	3000-1693BX	Low Voltage Terminal Block Wire Harness	X	X	X	X	X	X	X	X	X	X	X	X	X	X	X	X

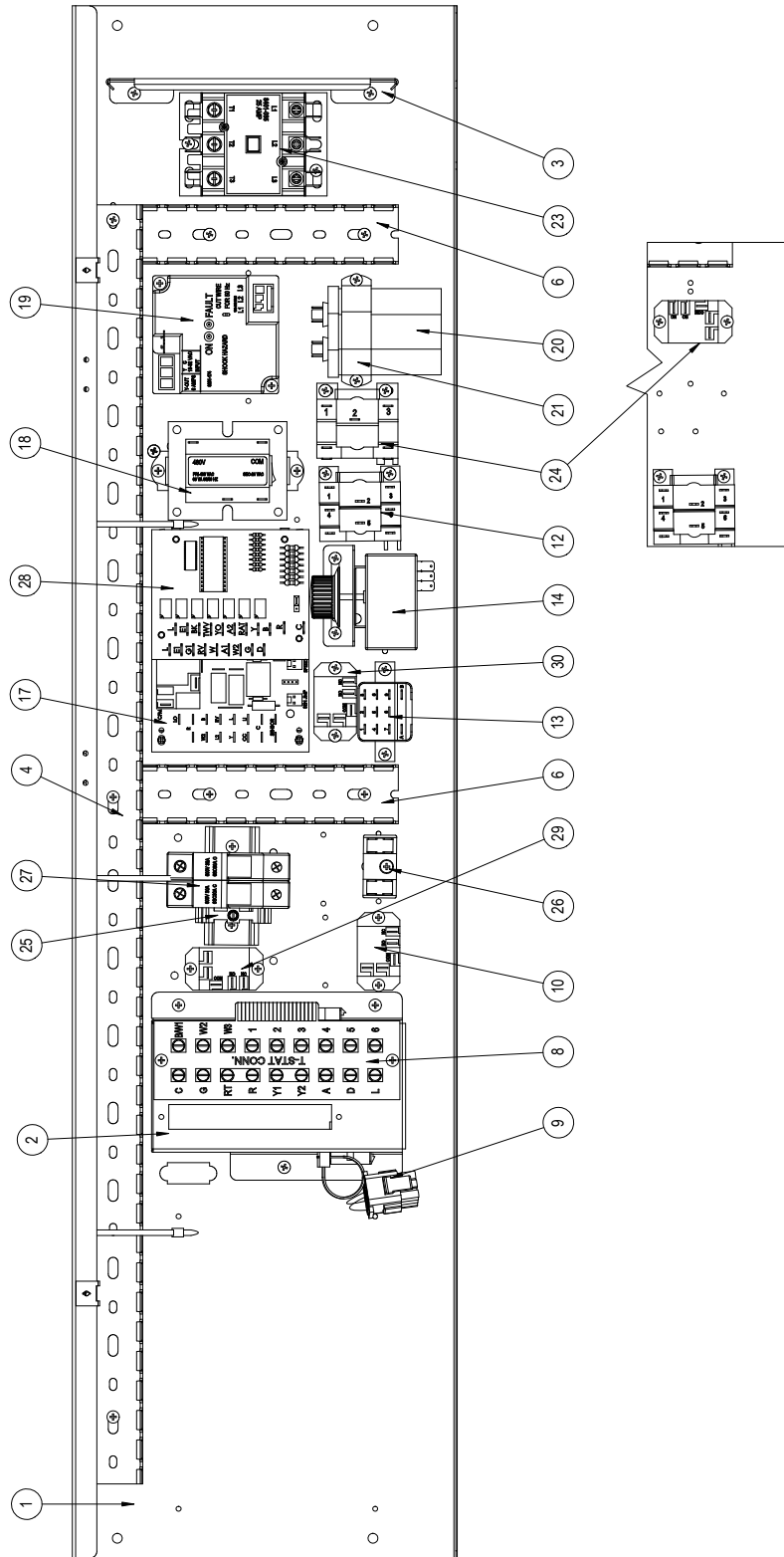
NS = Not Shown

X – Standard Component
O – Optional Component

Refer to drawing on page 20

This page intentionally left blank

CONTROL PANEL - 460V 3PH



SEXP-1132

This drawing to be used for reference for pages 25 and 26

CONTROL PANEL – 460V 3PH

Dwg. No.	Part Number	Description	C36HF-C	C42HF-C	C48HF-C	C60HF-C	C36HFDC	C42HFDC	C48HFDC	C60HFDC
1	117-456BX	Control Panel	X	X	X	X	X	X	X	X
2	910-2206BX	Complete Low Voltage Box Assembly (Sheet metal, Terminal Strip & Wire Harness)	X	X	X	X	X	X	X	X
3	135-394BX	Wire Shield	X	X	X	X	X	X	X	X
4	8611-244-3208	Cable Duct - 32.5"	X	X	X	X	X	X	X	X
6	8611-244-0608	Cable Duct - 6.5"	2	2	2	2	2	2	2	2
8	8607-063BX	Low Voltage Terminal Strip - 18 Terminal	X	X	X	X	X	X	X	X
9	3000-1524BX	Vent Jumper Plug (used when no vent option)	X	X	X	X	X	X	X	X
10	8201-130BX	Alarm Relay (Kit = CMC-35)	0	0	0	0	0	0	0	0
12	8201-086BX	OD T-Stat/LAC Relay (LAC Kit = CMH-35)	0	0	0	0	0	0	0	0
13	8201-159BX	Dirty Filter Relay (Kit = CMC-33)	0	0	0	0	0	0	0	0
14	8408-028BX	Outdoor Thermostat (ODT Kit = CMH-36)	0	0	0	0	0	0	0	0
17	8620-223	Defrost Logic Control Board w/Sensor	X	X	X	X	X	X	X	X
18	8407-050BX	Transformer 480/24VAC 75VA	X	X	X	X	X	X	X	X
19	8201-174BX	3 Phase Line Monitor 50/60Hz	X	X	X	X	X	X	X	X
20	8552-004BX	Capacitor 7-1/2MFD 370V 1-1/4" O	X	X	X		X	X	X	
21	8550-003BX	Capacitor Bracket 1-1/4" Oval	X	X	X		X	X	X	
23	8401-035BX	Contacto 3-Pole 25 Amp	X	X	X	X	X	X	X	X
24	8201-032BX	Outdoor Fan Relay	X	X	X		X	X	X	
24	8201-130BX	Outdoor Fan Relay (located where capacitor device shown)				X				X
25	8611-144BX	End Clamp for DIN Rail	X	X	X	X	X	X	X	X
26	8607-017BX	Terminal Block 240V 2 Terminal	X	X	X	X	X	X	X	X
27	8614-058BX	2-Pole Enclosed Fuse Holder	X	X	X	X	X	X	X	X
28	8201-113BX	Dehum Logic Board					X	X	X	X
29	8201-130BX	Dehum Control Relay					X	X	X	X
30	8201-130BX	3-Way Valve Control Relay								X
NS	8615-095BX	Toggle Disconnect	0	0	0	0	0	0	0	0
NS	8615-096BX	Disconnect Cover	0	0	0	0	0	0	0	0
NS	4217-301	Wiring Diagram	X	X	X					
NS	4217-302	Wiring Diagram				X				
NS	4217-303	Wiring Diagram					X	X	X	
NS	4217-304	Wiring Diagram								X
NS	3000-1706BX	Blower Power Plug	X	X	X	X	X	X	X	X
NS	3000-1732BX	Blower Speed Plug	X	X	X	X	X	X	X	X
NS	3000-1230BX	Compressor Plug/Harness	X	X	X	X	X	X	X	X
NS	3000-1223BX	Compressor Plug/Harness - Stage 2 Plug	X	X	X	X	X	X	X	X
NS	3003-180BX	Control Panel Wire Harness	X	X	X					
NS	3003-183BX	Control Panel Wire Harness					X	X	X	
NS	3003-185BX	Control Panel Wire Harness				X				
NS	3003-188BX	Control Panel Wire Harness								X

Continued on page 26

NS = Not Shown

X – Standard Component
O – Optional Component

CONTROL PANEL – 460V 3PH

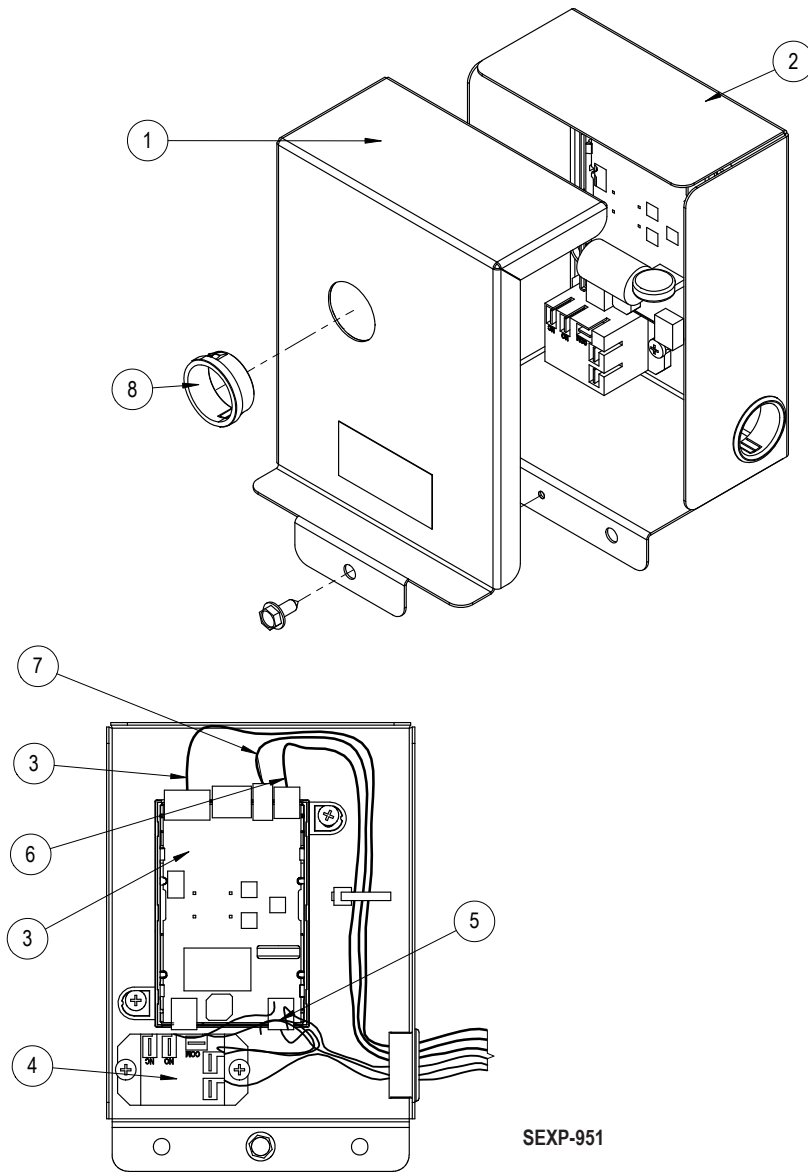
Dwg. No.	Part Number	Description	C36HF-C	C42HF-C	C48HF-C	C60HF-C	C36HFDC	C42HFDC	C48HFDC	C60HFDC
<i>Continued from page 25</i>										
NS	3000-1693BX	Low Voltage Terminal Block Wire Harness	X	X	X	X	X	X	X	X
NS	8614-046BX	5A Class CC Fuse (used with Dwg. No. 27)	2	2	2		2			
NS	8614-042BX	7A Class CC Fuse (used with Dwg. No. 27)				2		2	2	2

NS = Not Shown

X – Standard Component
O – Optional Component

Refer to drawing on page 24

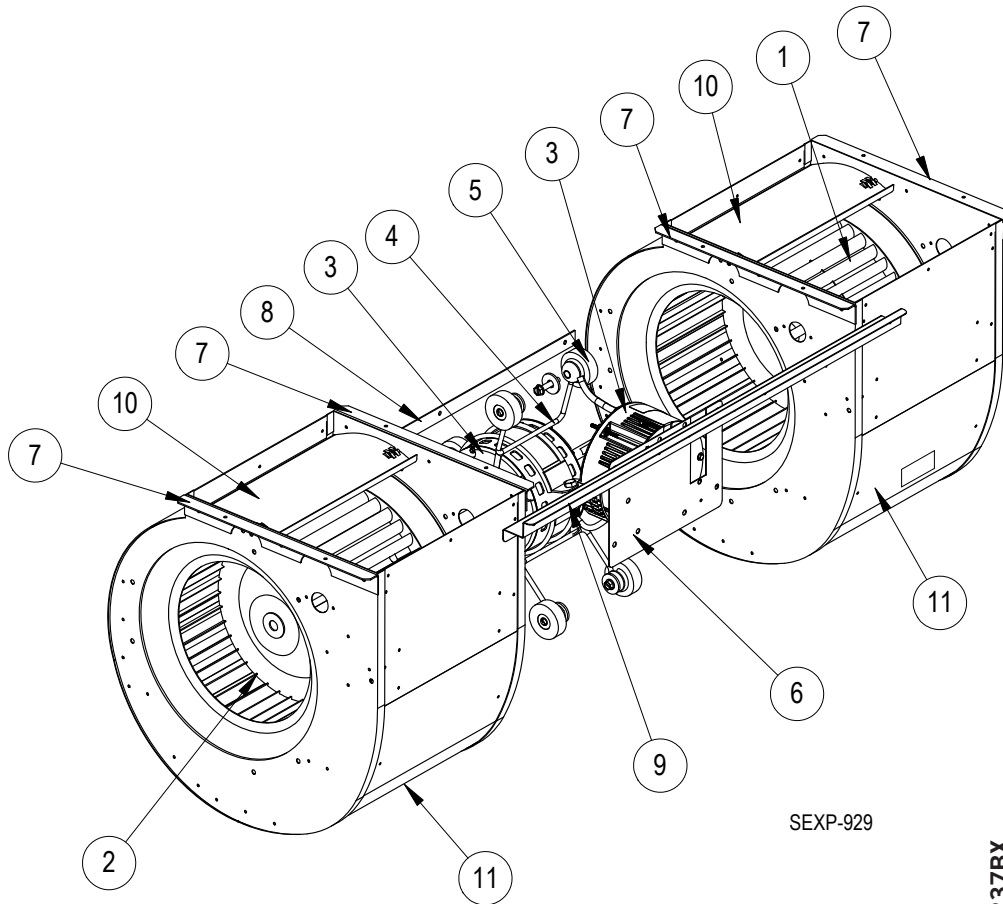
EEV CONTROLLER ASSEMBLY



910-2050-005BX
910-2050-006BX

Dwg No.	Part Number	Description	910-2050-005BX	910-2050-006BX
1	143-219BX	EEV Control Box Cover	X	X
2	127-572BX	EEV Control Box	X	X
3	8301-079-0005BX	EEV Control & Stator Cable	X	
3	8301-079-0006BX	EEV Control & Stator Cable		X
3	5651-246BX	EEV Stator Cable Only	X	X
4	8201-130BX	Control Relay	X	X
5	3000-1602BX	Main Wire Assembly	X	X
6	3000-1611BX	Transducer Wire Assembly – Connects to EEV Board	X	X
6	3000-1603BX	Transducer Wire Assembly – Connects to Transducer	X	X
7	8408-056BX	EEV Thermistor	X	X
8	8611-075	Clear Snap Plug	X	X

BLOWER ASSEMBLY



SEXP-929

Dwg No.	Part Number	Description	900-398-0237BX	900-398-0238BX	900-397-0239BX	900-397-0240BX
1	5152-011BX	10 Inch Wheel CW 1/2" 10-8DD	X	X	X	X
2	5152-012BX	10 Inch Wheel CCW 1/2" 10-8DD	X	X	X	X
3	8106-073-0237BX	Programmed Blower Motor & Control (230/208V)	X			
3	8106-073-0238BX	Programmed Blower Motor & Control (230/208V)		X		
3	8107-032-0239BX	Programmed Blower Motor & Control (230/208V)			X	
3	8107-032-0240BX	Programmed Blower Motor & Control (230/208V)				X
3	C8106-073-0237	Programmed Control Only (230/208V)	0			
3	C8106-073-0238	Programmed Control Only (230/208V)		0		
3	C8107-032-0239	Programmed Control Only (230/208V)			0	
3	C8107-032-0240	Programmed Control Only (230/208V)				0
4	8200-040BX	Motor Mount	X	X	X	X
5	5451-011	Grommets	6	6	6	6
6	112-775BX	Motor Control Bracket	X	X	X	X
7	105-880BX	Side Angle	4	4	4	4
8	105-881BX	Back Brace	X	X	X	X
9	103-541BX	Front Mounting Offset	X	X	X	X
10	144-166BX	Diffuser	2	2	2	2
11	151-101BX	Blower Housing	2	2	2	2

X – Standard Component
O – Optional Component