



Climate Control Solutions

Bard Manufacturing Company, Inc.  
Bryan, Ohio 43506

# CMA-22 Installation Instructions

## Low Ambient Control Kit

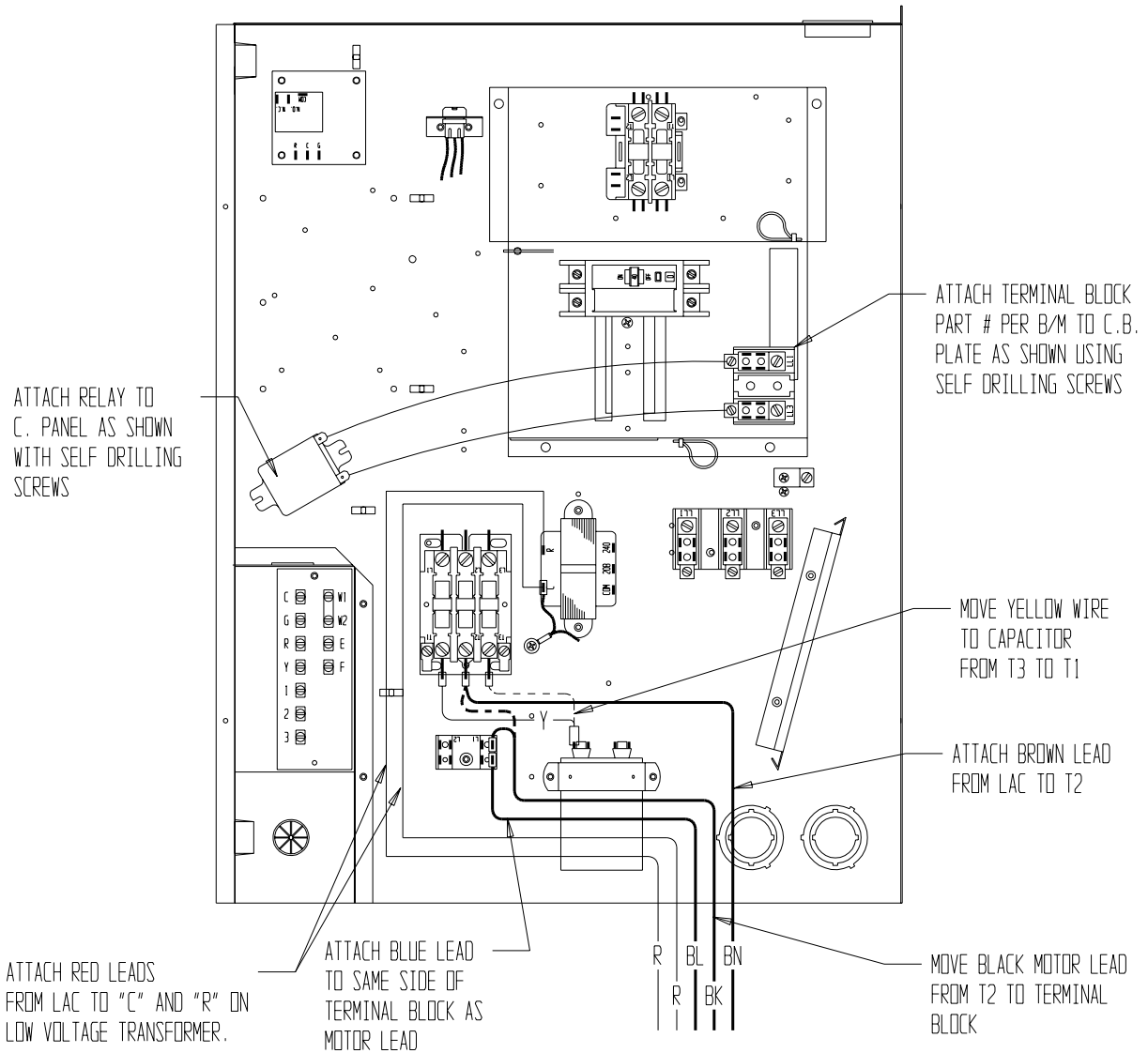
### INSTALLATION

1. Disconnect all power to unit.
2. Remove the left and right side grilles to gain access to the mounting area.
3. Mount control in position shown in MD-2633.
4. Connect flair tee adapter to discharge line of the air conditioner.
5. Remove control panel cover.
6. Disconnect any existing low ambient control from the motor power circuit. It may be left connected to the refrigeration circuit.
7. Connect RED wires to terminals R and C of Wall Mount low voltage transformer. See wiring diagram 4095-232C and MIS-2452.
8. Connect BLUE wire to L1 side of TB2.
9. Connect BROWN wire to T2 of compressor contactor.
10. Move YELLOW capacitor lead from T3 to T1 on compressor contactor.
11. Secure inverter relay assembly as shown in MIS-2452. Wire per wiring diagram 4095-232C.
12. Secure rain cover over top of P66 control.
13. Replace all panels and covers. Control is now ready for use.

### OPERATIONAL SEQUENCE

1. If the discharge pressure is between 0 and below 160 PSIG, the motor will be off.
2. If the discharge pressure is 160 PSIG, the motor will start at 25% of line voltage.
3. If the discharge pressure is between 160 and 220 PSIG, the motor voltage will vary proportionally from 25 to 90% of line voltage.
4. If the discharge pressure is 220 PSIG, the motor voltage will be at 90% of line voltage.
5. As the discharge pressure increases above 220 PSIG the motor voltage will increase to 97% of line voltage.





MIS-2452

