

---

# INSTALLATION INSTRUCTIONS

---

## CMC-29 Freeze Thermostat Kit

---

The CMC-29 is a field-installable freeze thermostat suitable for use as a compressor cutoff thermostat. This thermostat stops compressor operation if the coil temperature falls below 32°F.

The CMC-29 kit consists of:

- 8408-048 Freeze Thermostat
- 7960-642A Installation Instructions

The CMC-29 kit is for use with Bard wall-mount units, including Q-TEC™ air conditioners and heat pumps. See individual unit specification sheets to determine where used.

### INSTALLATION

1. Disconnect all power to wall-mount unit.
2. Remove outer and inner control panel covers, upper door and front service access panel.
3. Using attached mounting clip, mount 8408-048 freeze thermostat on the header stub towards the bottom of the coil or to the lower 1/4" feeder tube of coil.
4. Route wires into the control panel area as shown in Figure 1 (page 2) and Figure 2 (page 3).
5. Disconnect the yellow wire at the compressor contactor and connect to the tab end of the freeze thermostat. Tape connection.
6. Connect other wire from freeze thermostat to the terminal that the yellow wire was removed from.
7. Recheck wiring (see Figure 3 on page 4).
8. Replace all panels and covers and turn power on to unit. This completes the installation.

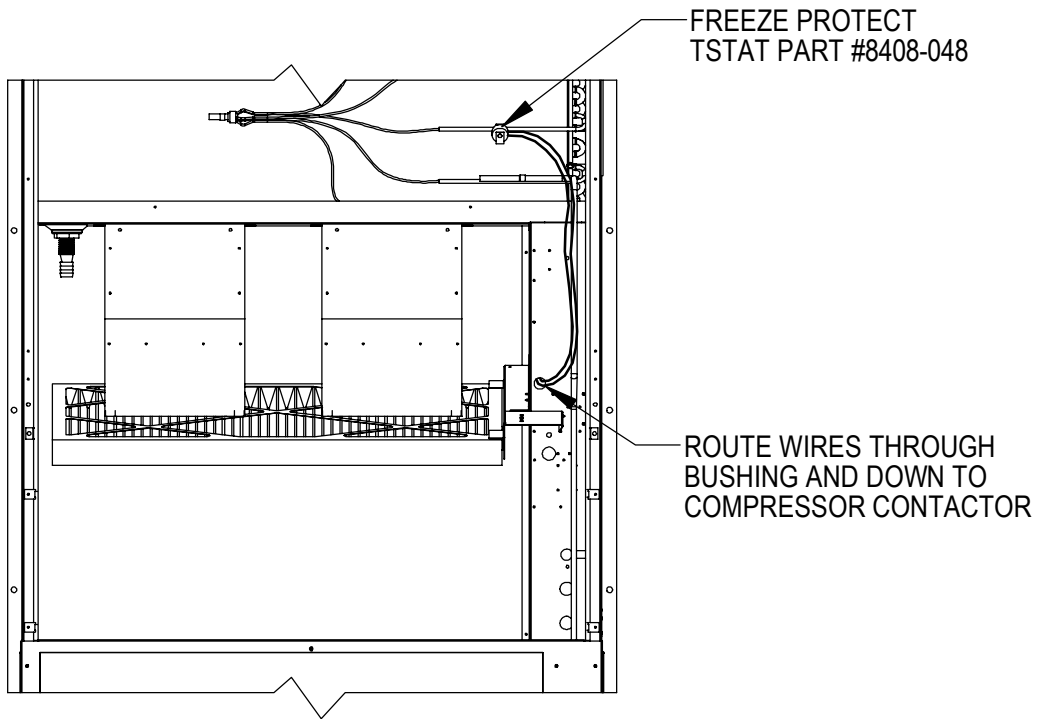


Bard Manufacturing Company, Inc.  
Bryan, Ohio 43506  
www.bardhvac.com

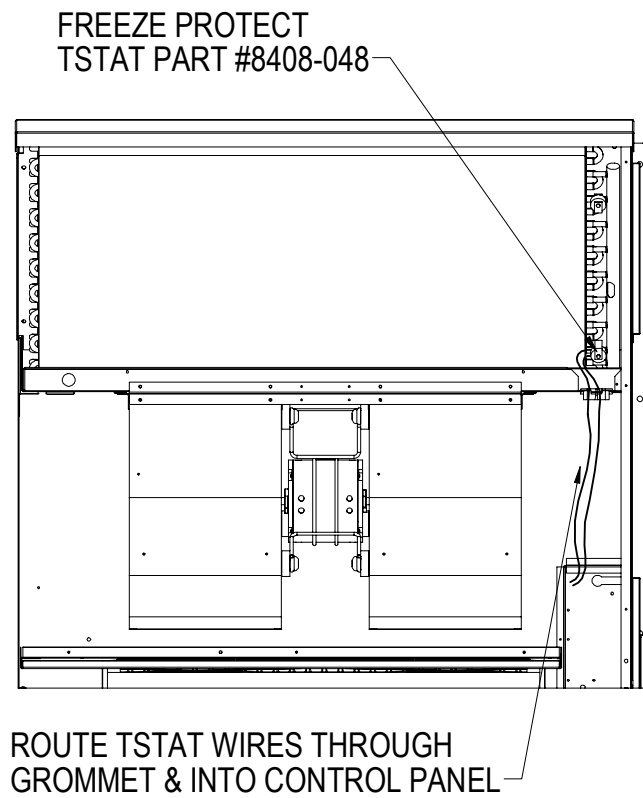
Manual: 7960-642A  
Supersedes: 7960-642  
Date: 8-11-16

*Climate Control Solutions*

**FIGURE 1**  
**Wall-Mount Units**



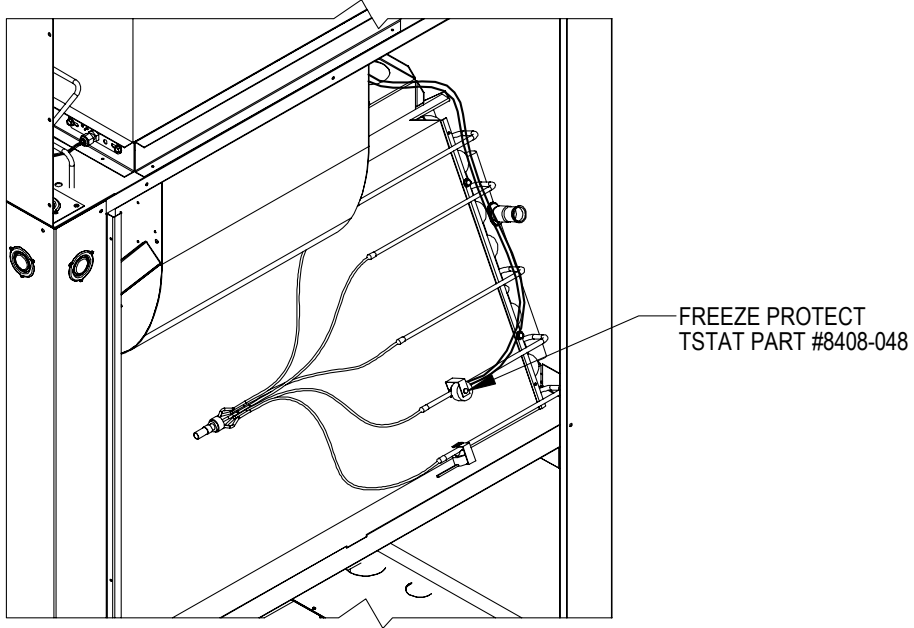
MIS-2991A



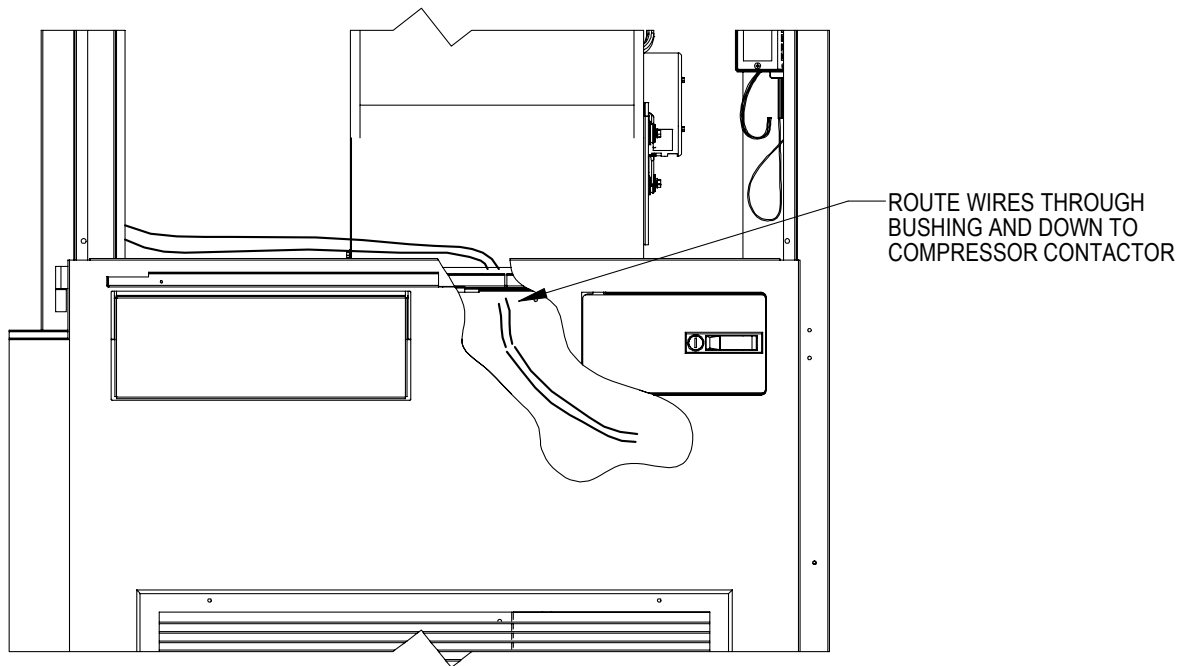
MIS-3860

**FIGURE 2**  
**Q-TEC™ Units**

**VIEW FROM REAR WITH BACK REMOVED**

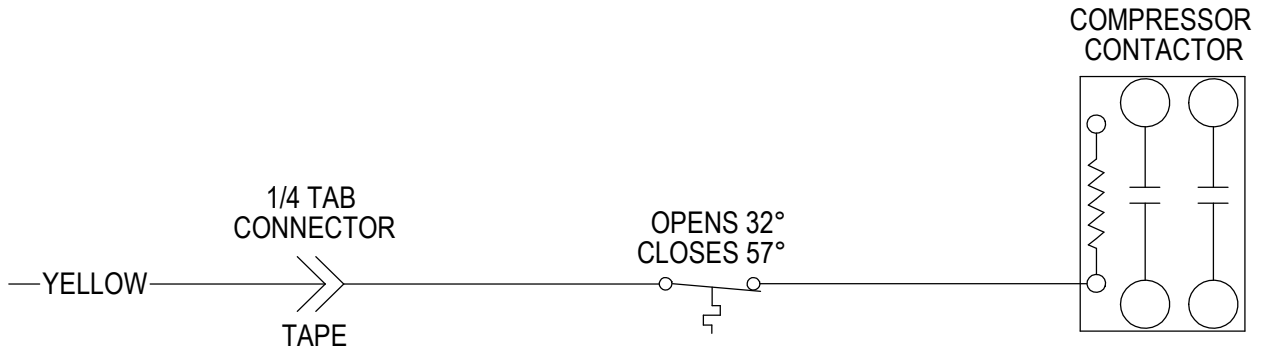


**FRONT VIEW**



MIS-2992 A

**FIGURE 3**  
**Wiring**



MIS-2990